

WAAS CH 90502 W09A	APP CRS 093°	Rwy Ldg 10062 TDZE 1428 Apt Elev 1428
----------------------------------------	------------------------	------------------------------------------------------------------

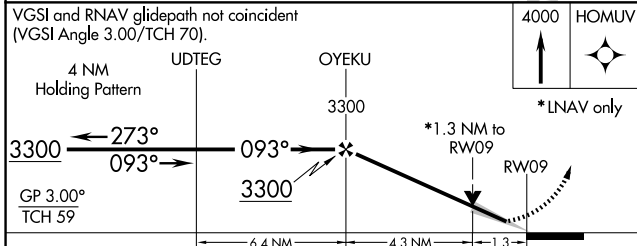
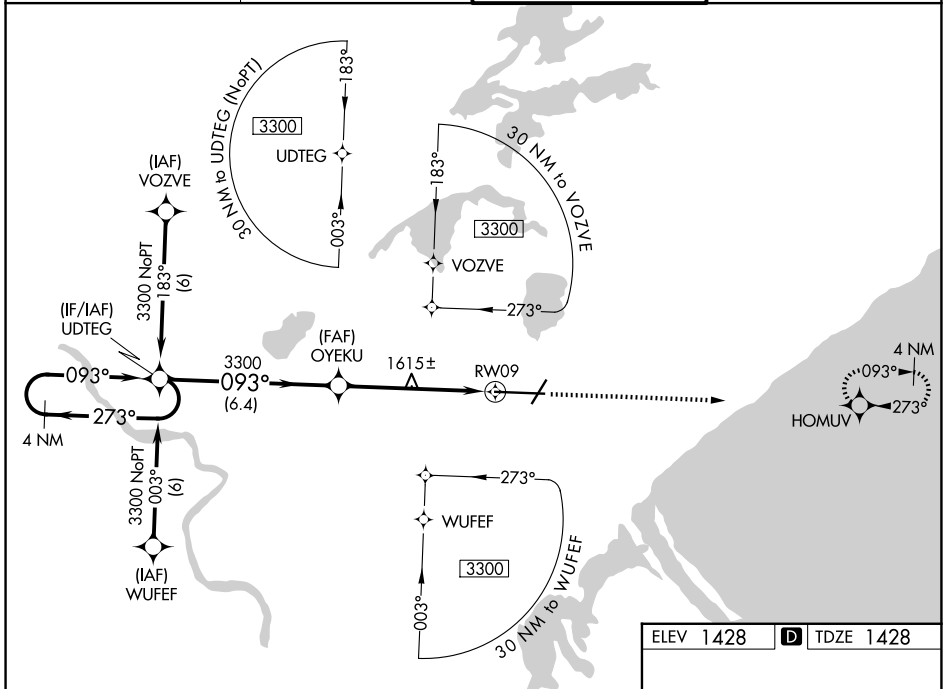
RNAV (GPS) RWY 9

DULUTH INTL (DLH)

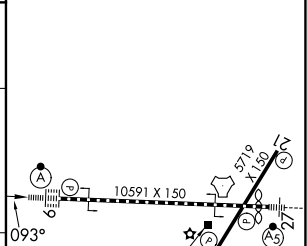
ASR For uncompensated Baro-VNAV systems, LNAV/VNAV NA below -17°C (2°F) or above 46°C (115°F). DME/DME RNP-0.3 NA. Circling NA for Cat E southeast of Rwy 3/27. For inop ALS, increase LPV Cat E visibility to ¾ SM, LNAV/VNAV all Cats visibility to 1½ SM and LNAV Cat E visibility to 1½ SM.

ALS-F-2
MISSED APPROACH: Climb to 4000 direct HOMUV and hold.

ATIS 124.1 270.1	DULUTH APP CON 125.45 233.7	DULUTH TOWER 118.3 257.8	GND CON 121.9 348.6
----------------------------	---------------------------------------	------------------------------------	-------------------------------



ELEV 1428	D TDZE 1428
-----------	--------------------



CATEGORY	A	B	C	D	E
LPV DA	1628/18		200 (200-½)		
LNAV/VNAV DA	1860/50		432 (500-1)		
LNAV MDA	1880/24	452 (500-½)	1880/40 452 (500-¾)	1880/50 452 (500-1)	
CIRCLING	1880-1 452 (500-1)	1900-1 472 (500-1)	1940-1½ 512 (600-1½)	2400-3 972 (1000-3)	

TDZ/CL Rwy 9
REIL Rwy 3 and 21
HIRL Rwy 9-27
MIRL Rwy 3-21

NC-1, 16 APR 2026 to 14 MAY 2026

NC-1, 16 APR 2026 to 14 MAY 2026