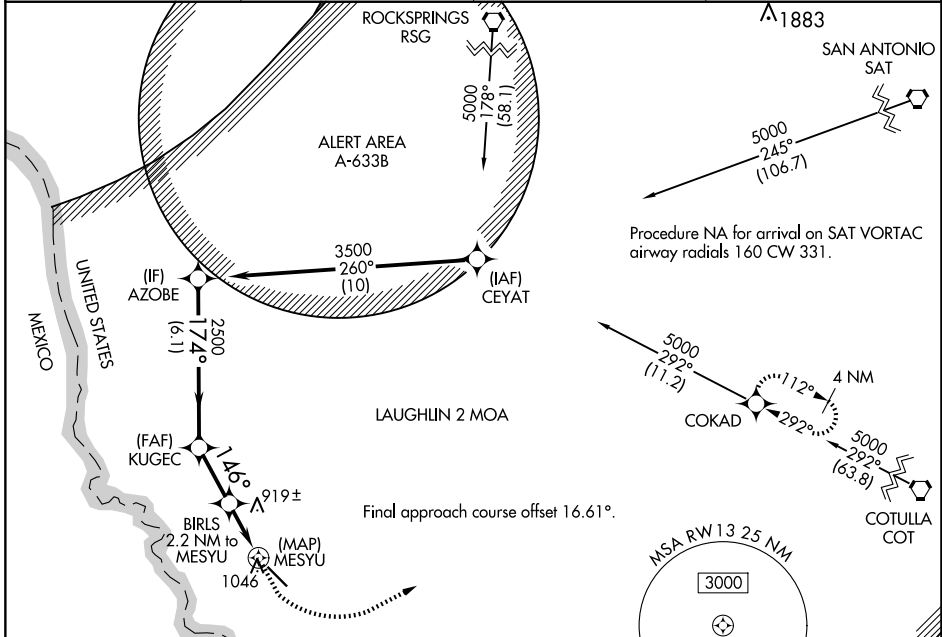


WAAS CH 65942 W13A	APP CRS 146°	Rwy Idg TDZE Apt Elev	5506 887 887
--	------------------------	-----------------------------	---

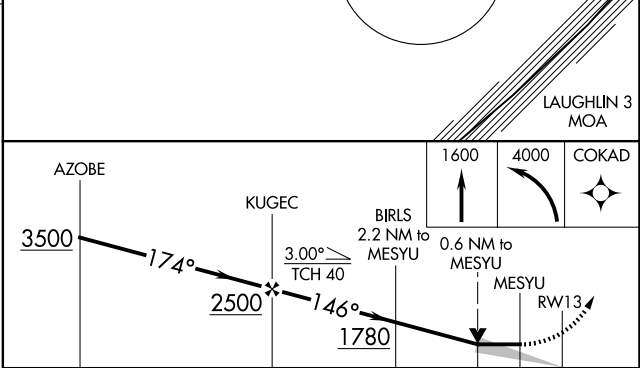
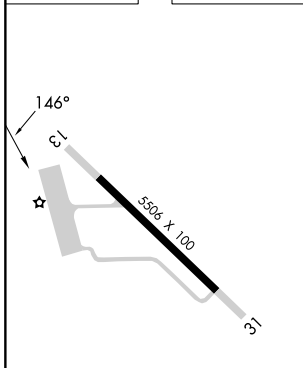
RNAV (GPS) RWY 13

MAVERICK COUNTY MEML INTL (5T9)

RNP APCH.		MISSED APPROACH: Climb to 1600 then climbing left turn to 4000 direct COKAD and hold.	
AWOS-3 119.175	KDLF ATIS ★ 114.4 269.9	DEL RIO APP CON ★ 127.75 326.2	UNICOM 122.8 (CTAF) 0



ELEV 887	TDZE 887
----------	----------



CATEGORY	A	B	C	D
LP MDA	1260-1 373 (400-1)			NA
LNAV MDA	1360-1	473 (500-1)	1360-1 $\frac{3}{8}$ 473 (500-1 $\frac{3}{8}$)	NA

SC-3, 16 APR 2026 to 14 MAY 2026

SC-3, 16 APR 2026 to 14 MAY 2026