

WAAS CH 63207 W31A	APP CRS 309°	Rwy Idg 5506 TDZE 882 Apt Elev 887
--	------------------------	---

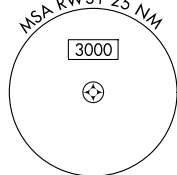
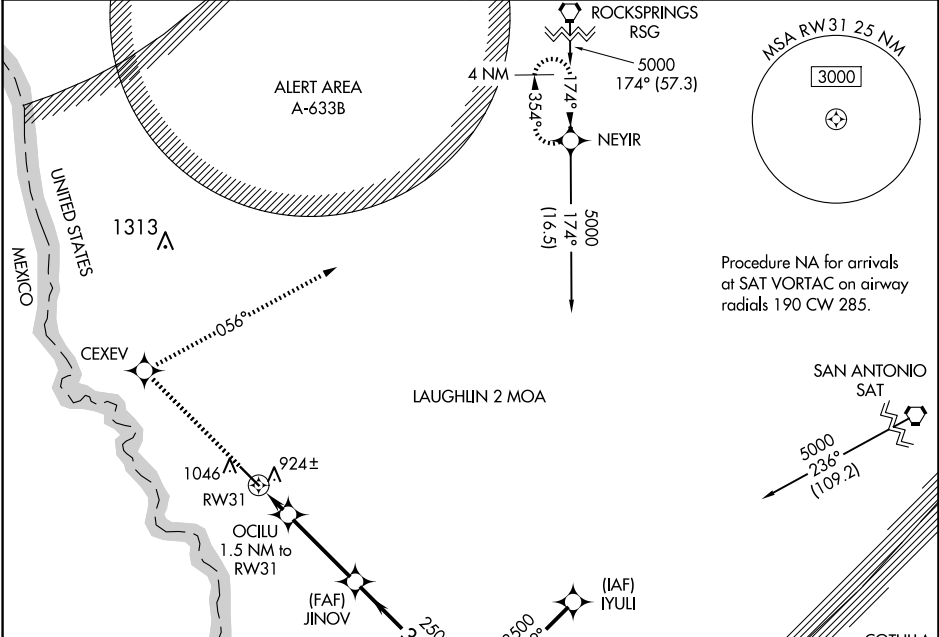
RNAV (GPS) RWY 31

MAVERICK COUNTY MEML INTL (5T9)

▼ Baro-VNAV NA. DME/DME RNP-0.3 NA. Use Laughlin AFB altimeter setting; when not received, use Del Rio Intl altimeter setting.
▲ NA

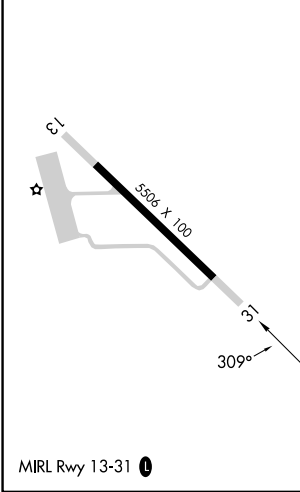
MISSED APPROACH: Climb to 4000 direct CEXEV and via 056° track to NEYIR and hold.

AWOS-3 119.175	KDLF ATIS* 114.4 269.9	DEL RIO APP CON * 127.75 326.2	UNICOM 122.8 (CTAF) 📶
--------------------------	----------------------------------	--	--

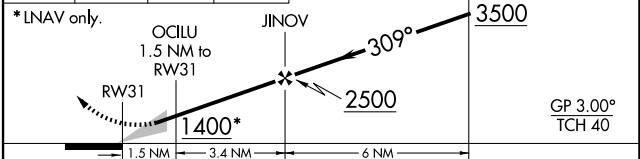


Procedure NA for arrivals at SAT VORTAC on airway radials 190 CW 285.

ELEV 887	TDZE 882
-----------------	-----------------



4000	CEXEV	NEYIR	Procedure Turn NA
↑	✦	✦	



CATEGORY	A	B	C	D
LPV DA	1236-1¼	354 (400-1¼)		NA
LNAV/VNAV DA	1298-1½	416 (500-1½)		NA
LNAV MDA	1280-1	398 (400-1)		NA
CIRCLING	1500-1	613 (700-1)	1500-1¾ 613 (700-1¾)	NA

SC-3, 16 APR 2026 to 14 MAY 2026

SC-3, 16 APR 2026 to 14 MAY 2026