

EL PASO, TEXAS

HI-VOR or TACAN RWY 26L

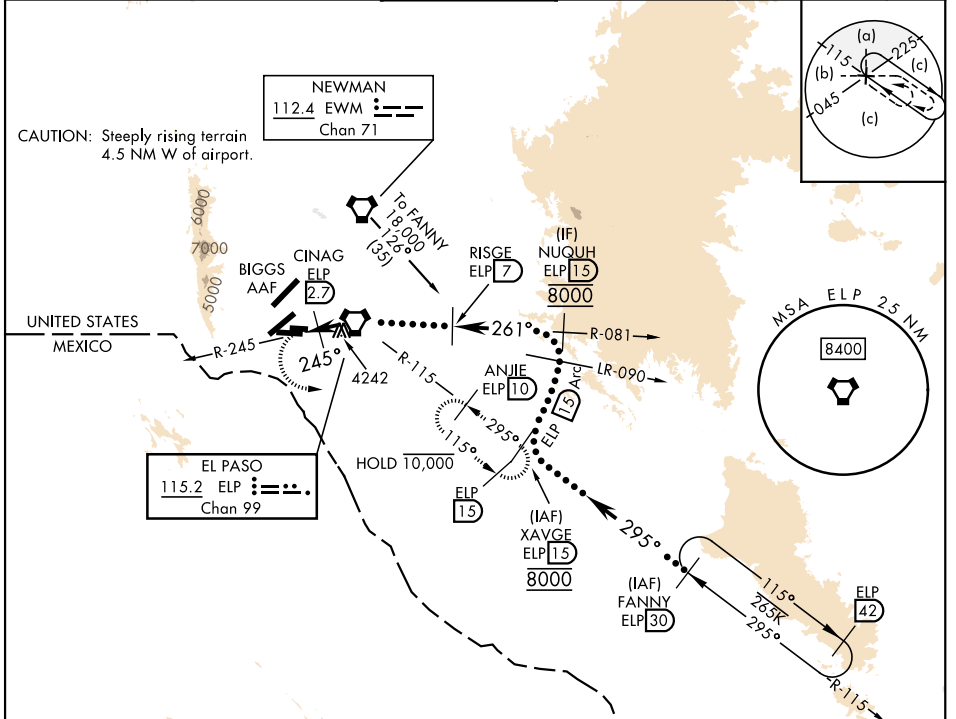
VORTAC ELP 115.2 Chan 99	APCH CRS 245°	Rwy Idg THRE Arprt Elev 9023 3962 3962
--	-------------------------	--

[USAF]

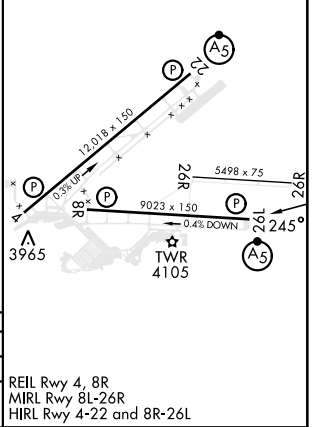
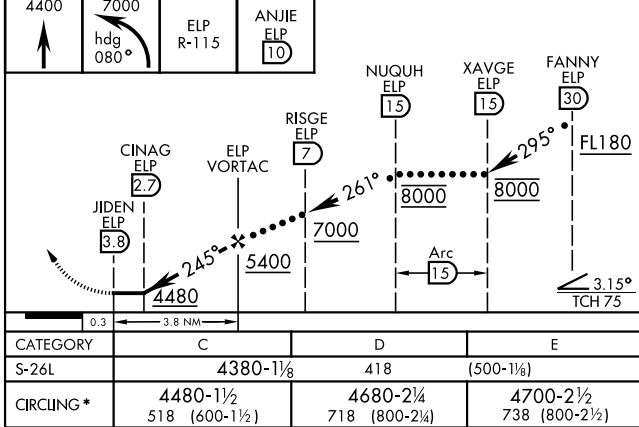
EL PASO INTL (KELP)

DME required	MALSR 	MISSED APPROACH: Climb to 4400, then climbing left turn to 7000 via heading 080° and ELP VORTAC R-115 to ANJIE/ELP 10 DME and hold, continue climb in hold to 7000.
--------------	-----------	---

ATIS 120.0 254.3	APP CON S of V16 119.15 353.5 N of V16 124.25 298.85	TOWER 118.3 239.275	GND CON 121.9 348.6	CLNC DEL 125.0 379.1	ASR
----------------------------	--	-------------------------------	-------------------------------	--------------------------------	-----



EMERG SAFE ALT 100 NM 16,000	ELEV 3962	THRE 3962
------------------------------	-----------	-----------



CATEGORY	C	D	E
S-26L	4380-1 1/8	418	(500-1 1/8)
CIRCUING*	4480-1 1/2 518 (600-1 1/2)	4680-2 1/4 718 (800-2 1/4)	4700-2 1/2 738 (800-2 1/2)

EL PASO, TEXAS 31°48'N-106°23'W EL PASO INTL (KELP)

HI-VOR or TACAN RWY 26L

Amdt 4B 03NOV22

REIL Rwy 4, 8R
MIRL Rwy 8L-26R
HIRL Rwy 4-22 and 8R-26L

SC-3, 16 APR 2026 to 14 MAY 2026

SC-3, 16 APR 2026 to 14 MAY 2026