

# RNAV (RNP) X RWY 8R

EL PASO INTL (ELP)

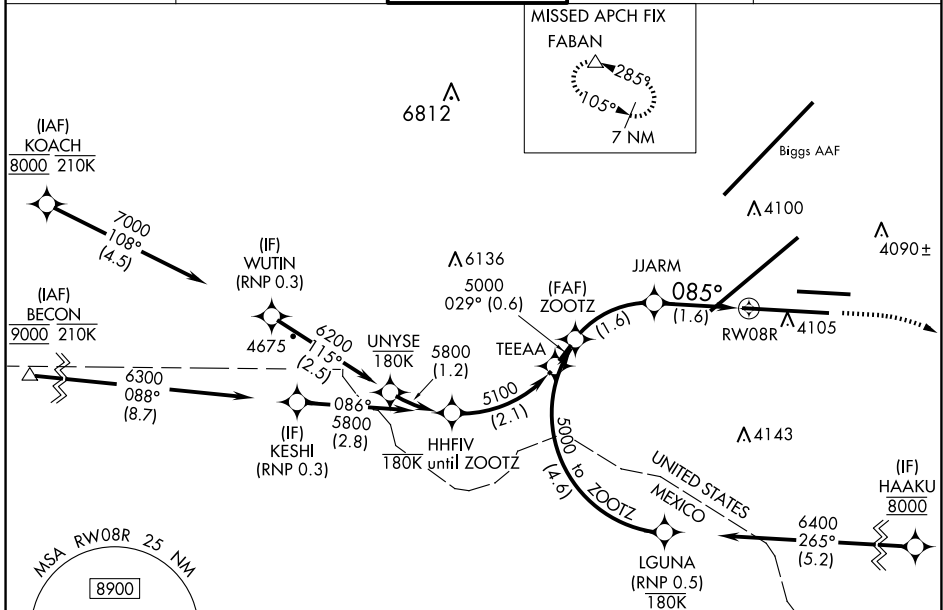
APP CRS	Rwy Ldg	<b>9025</b>
<b>085°</b>	TDZE	<b>3940</b>
	Apt Elev	<b>3962</b>

RNP AR APCH.  
RF required.

**ASR** For uncompensated Baro-VNAV systems, procedure NA below -5°C or above 54°C.

MISSED APPROACH: Climb to 4400 then climbing right turn to 7500 direct FABAN and hold.

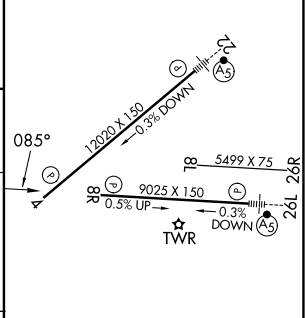
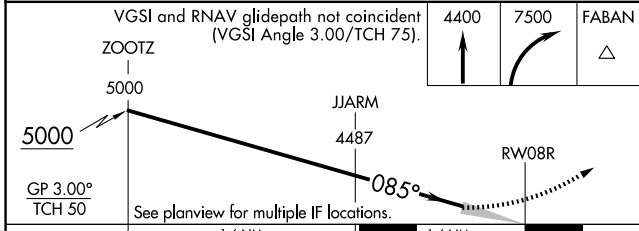
D-ATIS <b>120.0 254.3</b>	EL PASO APP CON <b>124.25 298.85</b>	EL PASO TOWER <b>118.3 239.275</b>	GND CON <b>121.9 348.6</b>	CLNC DEL <b>125.0 379.1</b>
------------------------------	---	---------------------------------------	-------------------------------	--------------------------------



SC-3, 16 APR 2026 to 14 MAY 2026

SC-3, 16 APR 2026 to 14 MAY 2026

ELEV	3962	TDZE	3940
------	------	------	------



CATEGORY	A	B	C	D
RNP 0.20 DA		4193- <sup>3</sup> / <sub>4</sub>	253 (300- <sup>3</sup> / <sub>4</sub> )	
RNP 0.30 DA		4234- <sup>7</sup> / <sub>8</sub>	294 (300- <sup>7</sup> / <sub>8</sub> )	

**AUTHORIZATION REQUIRED**

MIRL Rwy 8L-26R  
HIRL Rwy 4-22 and 8R-26L  
REIL Rwy 4 and 8R