

APP CRS	Rwy Ldg	<b>12020</b>
<b>042°</b>	TDZE	<b>3923</b>
	Apt Elev	<b>3962</b>

# RNAV (RNP) Y RWY 4

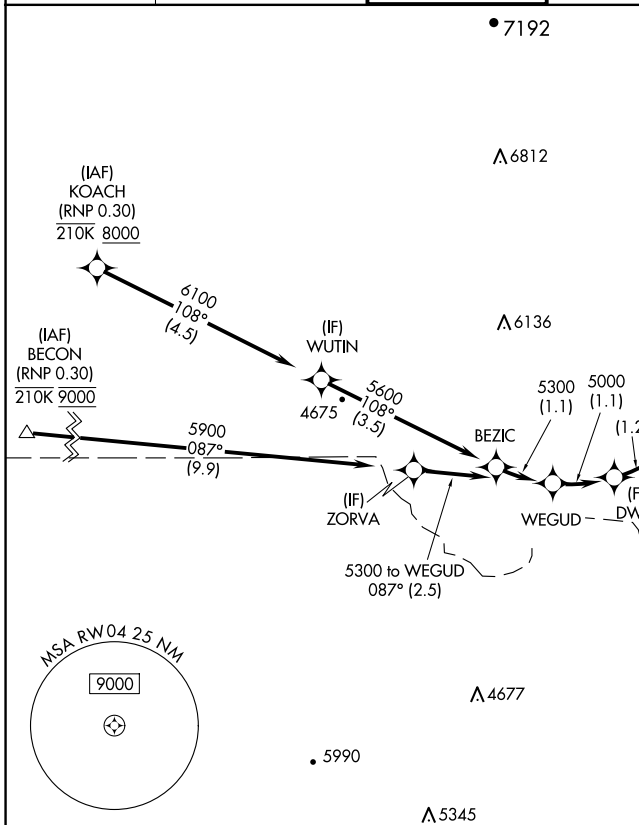
EL PASO INTL (ELP)

RNP AR APCH. RF required.

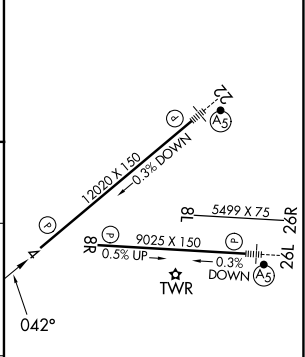
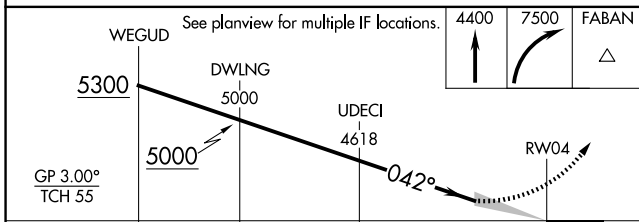
▼ For uncompensated Baro-VNAV systems, procedure NA below -22°C or above 54°C.

MISSED APPROACH: Climb to 4400 then climbing right turn to 7500 direct FABAN and hold.

D-ATIS	EL PASO APP CON	EL PASO TOWER	GND CON	CLNC DEL
<b>120.0 254.3</b>	<b>124.25 298.85</b>	<b>118.3 239.275</b>	<b>121.9 348.6</b>	<b>125.0 379.1</b>



ELEV	<b>3962</b>	TDZE	<b>3923</b>
------	-------------	------	-------------



WEGUD	DWLNG	UDECI	RW04	
5300	5000	4618		
GP 3.00° TCH 55				
	1.1 NM	1.2 NM	2 NM	
See planview for multiple IF locations.	4400	7500	FABAN	
CATEGORY	A	B	C	D
RNP 0.20 DA		4271/55	348 (400-1)	
RNP 0.30 DA		4340/60	417 (400-1¼)	

### AUTHORIZATION REQUIRED

MIRL Rwy 8L-26R  
 REIL Rwy 4 and 8R  
 HIRL Rwy 4-22 and 8R-26L

SC-3, 16 APR 2026 to 14 MAY 2026

SC-3, 16 APR 2026 to 14 MAY 2026