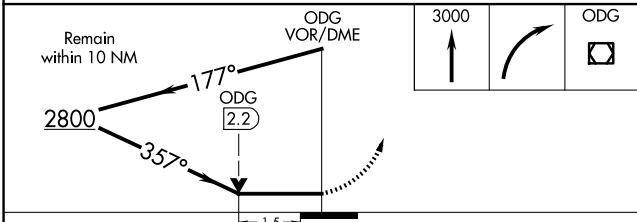
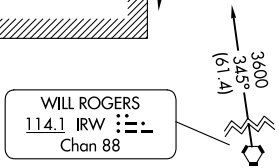
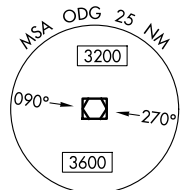
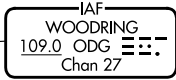
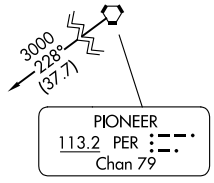
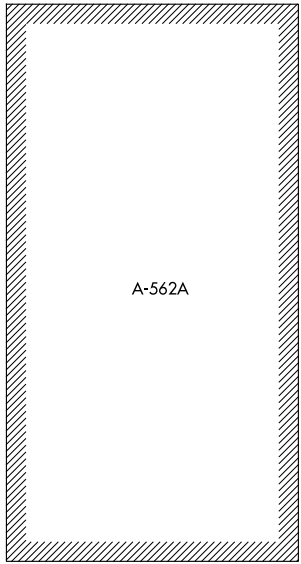


VOR/DME ODG 109.0 Chan 27	APP CRS 357°	Rwy Ldg TDZE 1147 Apt Elev 1167
--	------------------------	---

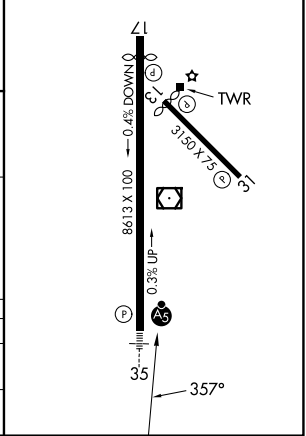
VOR RWY 35

ENID WOODRING RGNL (WDG)

<p>Circling Rwy 13 NA at night.</p>	<p>MALS</p>	MISSED APPROACH: Climb to 3000 then right turn direct ODG VOR/DME and hold.	
		<p>AWOS-3PT 123.725</p>	<p>VANCE APP CON * 121.3 346.325</p>



ELEV 1167		TDZE 1147
MIRL Rwy 17-35		
REIL Rwy 17		



CATEGORY	A	B	C	D
S-35	1680-1/2	533 (600-1/2)	1680-1	533 (600-1)
CIRCLING	1760-1	593 (600-1)	1820-1 3/4 653 (700-1 3/4)	1880-2 1/4 713 (800-2 1/4)

SC-1, 16 APR 2026 to 14 MAY 2026

SC-1, 16 APR 2026 to 14 MAY 2026