

WAAS CH 50208 W03A	APP CRS 027°	Rwy Ldg TDZE Apt Elev	5500 1269 1276
--	------------------------	-----------------------------	---

RNAV (GPS) RWY 3

EPHRATA MUNI (EPH)

RNP APCH.

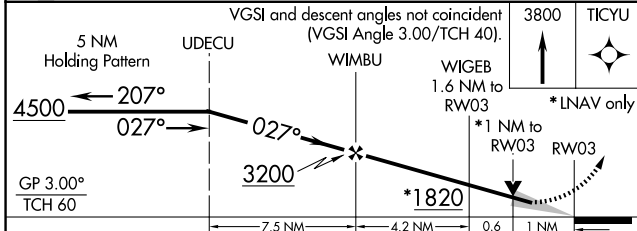
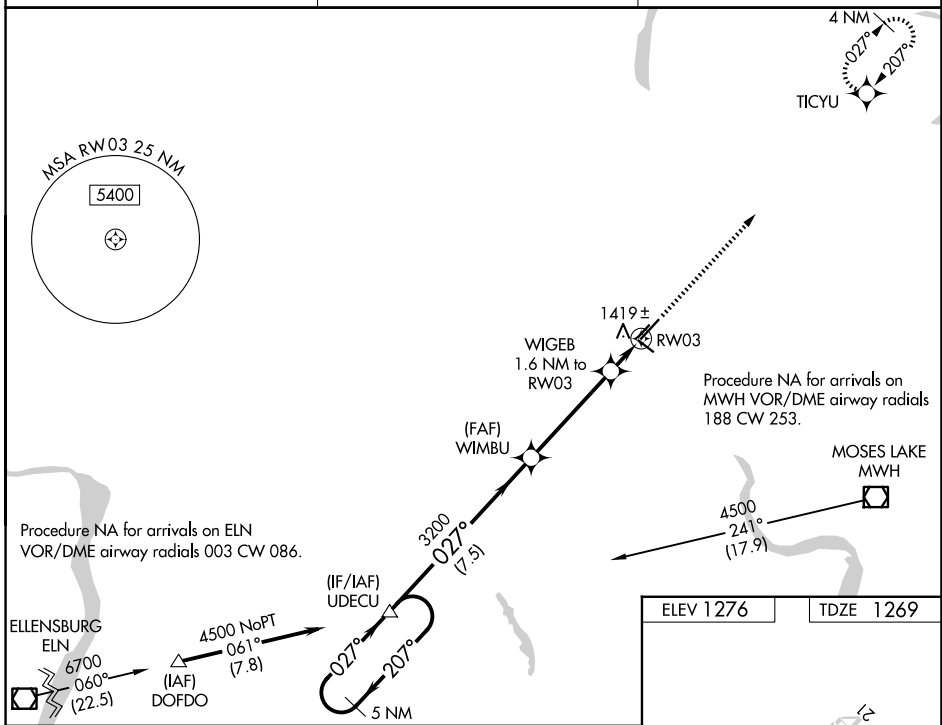
⚠ For uncompensated Baro-VNAV systems, LNAV/VNAV NA below -17°C or above 46°C. VDP and Baro-VNAV NA when using Moses Lake/Grant County Intl altimeter setting. When local altimeter setting not received, use Moses Lake/Grant County Intl altimeter setting and increase all DA/MDA 40 feet and LNAV Cat C and D visibility ¼ SM.

MISSED APPROACH: Climb to 3800 direct TICYU and hold.

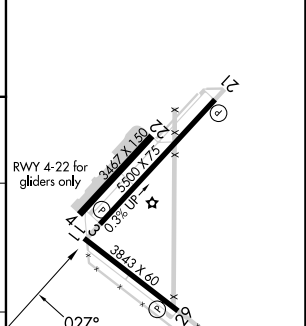
ASOS
135.775

GRANT COUNTY APP CON *
126.4 379.95

UNICOM
122.8 (CTAF) 0



ELEV 1276	TDZE 1269
-----------	-----------



CATEGORY	A	B	C	D
LPV DA		1519-1	250 (300-1)	
LNAV/VNAV DA		1689-1½	420 (500-1½)	
LNAV MDA	1680-1	411 (500-1)	1680-1¼	411 (500-1¼)

REIL Rwy 3, 11, 21 and 29 **0**
MIRL Rwy 11-29 and 3-21 **0**

NW-1, 16 APR 2026 to 14 MAY 2026

NW-1, 16 APR 2026 to 14 MAY 2026