

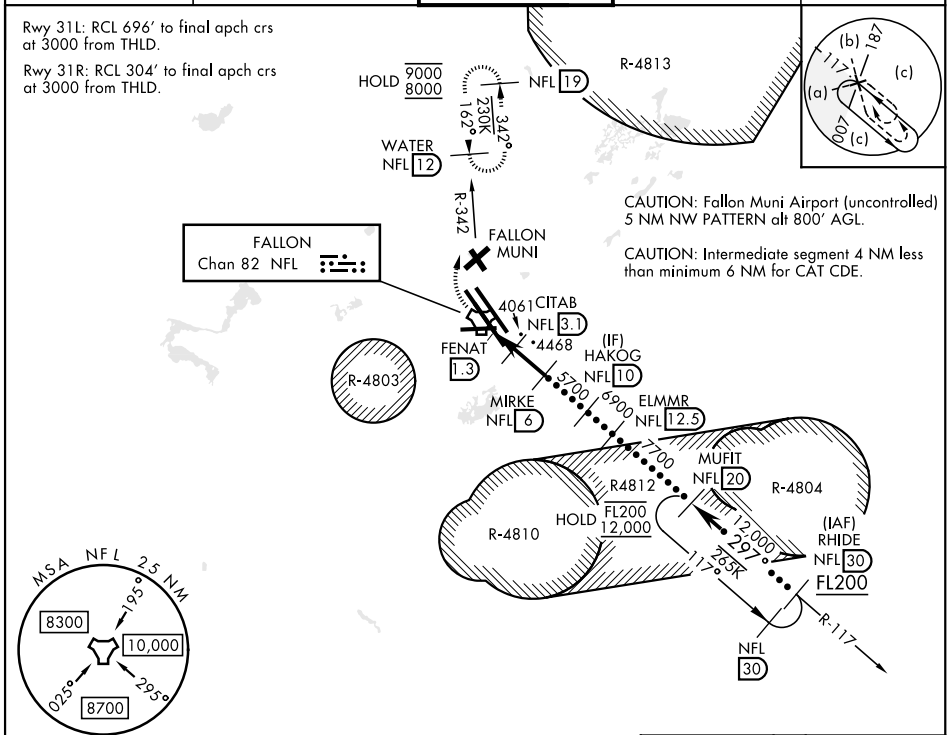
# HI-TACAN Z RWY 31L/R

TACAN NFL Chan <b>82</b>	APCH CRS <b>297°</b>	Rwy Idg 31L <b>14,001</b> 31R <b>11,076</b>
		TDZE 31L <b>3927</b> 31R <b>3928</b>
		Arpt Elev <b>3935</b>

[USN] FALLON NAS (VAN VOORHIS FLD) (KNFL)

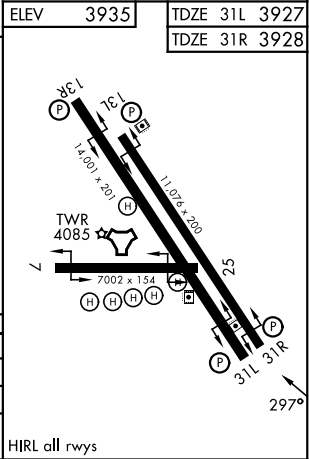
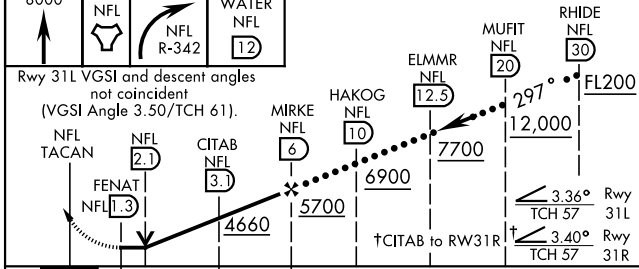
**MISSED APPROACH:** Climb to 8000 direct NFL TACAN, and right turn to intercept NFL R-342 to WATER and hold. Continue climb-in-hold to 8000.

ATIS ★ <b>370.925</b>	NAVY FALLON APP CON ★ <b>120.85 360.2</b>	NAVY FALLON TOWER ★ <b>119.25 340.2</b>	GND CON <b>251.15</b>	ASR/PAR
--------------------------	--	--	--------------------------	---------



CAUTION: Fallon Muni Airport (uncontrolled) 5 NM NW PATTERN alt 800' AGL.  
CAUTION: Intermediate segment 4 NM less than minimum 6 NM for CAT CDE.

EMERG SAFE ALT 100 NM 15,800	ELEV 3935	TDZE 31L 3927
		TDZE 31R 3928



CATEGORY	C	D	E
S-31L	4320-1½	393 (400-1½)	
S-31R	4320-1½	392 (400-1½)	
CIRCLING	4780-2½ 845 (900-2½)	5120-3 1185 (1200-3)	5160-3 1225 (1300-3)

FALLON, NEVADA 39°25'N-118°42'W FALLON NAS (VAN VOORHIS FLD) (KNFL)

# HI-TACAN Z RWY 31L/R



SW-4, 16 APR 2026 to 14 MAY 2026

SW-4, 16 APR 2026 to 14 MAY 2026

HIRL all rwys