

FALLON, NEVADA

# RNAV (GPS) RWY 25

APCH CRS	Rwy Idg	<b>7002</b>
<b>254°</b>	TDZE	<b>3928</b>
	Arpt Elev	<b>3935</b>

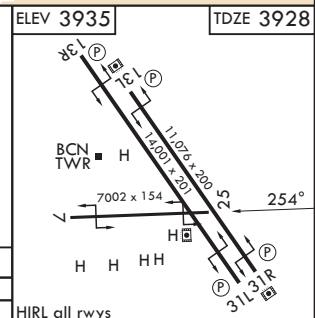
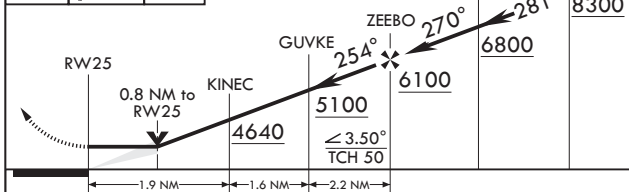
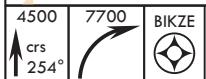
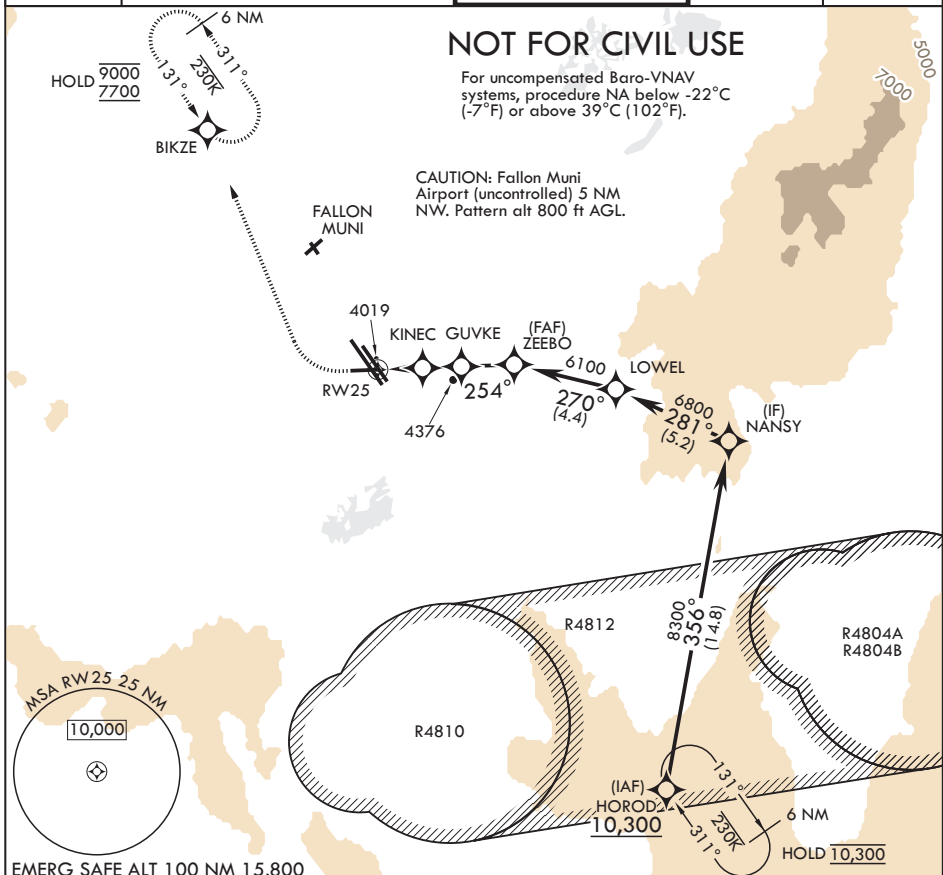
(USN)

FALLON NAS (VAN VOORHIS FLD) (KNFL)

RNP APCH-GPS

MISSED APPROACH: Climb to 4500 then climbing right turn to 7700 direct BIKZE and hold. Continue climb-in-hold to 7700.

ATIS★ <b>370.925</b>	NAVY FALLON APP CON/DEP CON★ <b>120.85 360.2</b>	NAVY FALLON TOWER★ <b>119.25 340.2</b>	GND CON <b>251.15</b>	ASR/PAR
-------------------------	---	---	--------------------------	---------



CATEGORY	A	B	C	D	HIRL all rwys
RNAV MDA	4280-1	352	(400-1)		

FALLON, NEVADA

39°25'N - 118°42'W

FALLON NAS (VAN VOORHIS FLD) (KNFL)

Orig 02OCT25

# RNAV (GPS) RWY 25

SW-4, 16 APR 2026 to 14 MAY 2026

SW-4, 16 APR 2026 to 14 MAY 2026