

FALLON, NEVADA

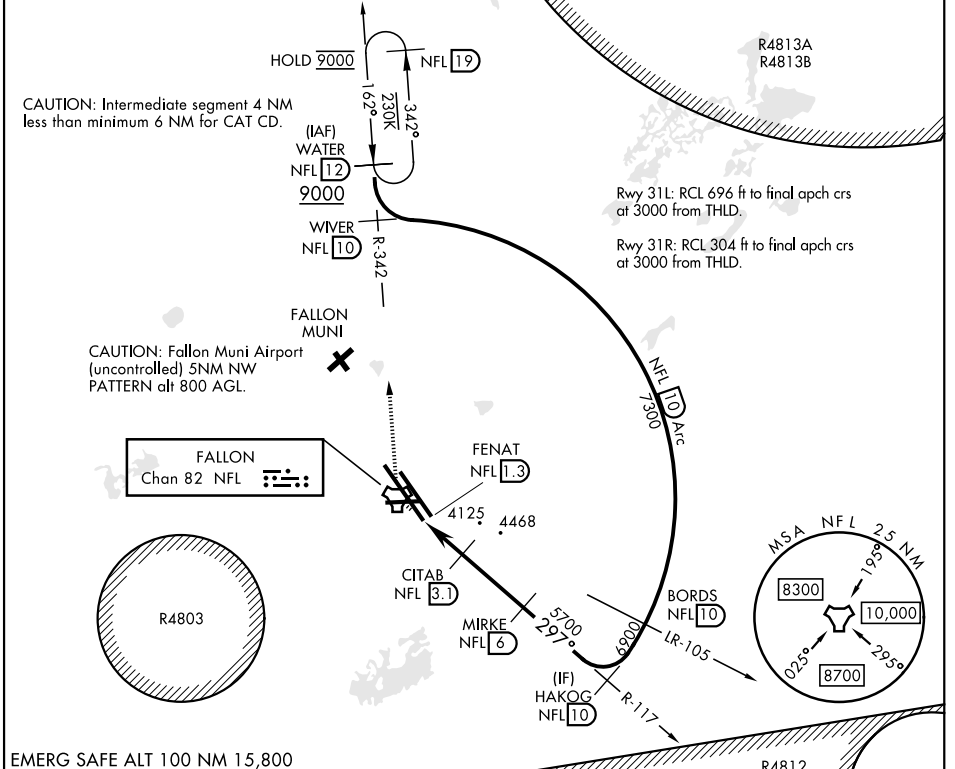
TACAN Y RWY 31L/R

TACAN NFL Chan 82	APCH CRS 297°	Rwy Idg 31L 14,001	31R 11,076
		TDZE 31L 3927	31R 3928
		Arpt Elev 3935	

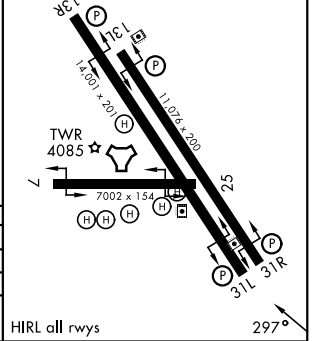
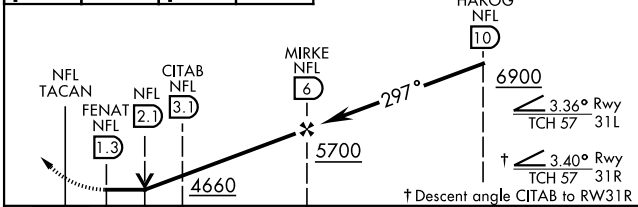
[USN] FALLON NAS (VAN VOORHIS FLD) (KNFL)

MISSED APPROACH: Climb to 8000 on NFL TACAN R-117 to NFL and right turn to intercept NFL R-342 to WATER and hold, continue climb-in-hold to 8000.

ATIS ★ 370.925	NAVY FALLON APP CON ★ 120.85 360.2	NAVY FALLON TOWER ★ 119.25 340.2	GND CON 251.15	ASR/PAR
--------------------------	--	--	--------------------------	---------



8000 NFL R-117	NFL	WATER NFL 12	Rwy 31L VGSI and descent angles not coincident: (VGSI Angle 3.50/TCH 61).	ELEV 3935	TDZE 31L 3927
					TDZE 31R 3928



CATEGORY	A	B	C	D
S-31L	4320-1 393 (400-1)	4320-1 1/8 393 (400-1 1/8)	4320-1 1/8 393 (400-1 1/8)	4320-1 1/8 393 (400-1 1/8)
S-31R	4320-1 393 (400-1)	4320-1 1/8 393 (400-1 1/8)	4320-1 1/8 393 (400-1 1/8)	4320-1 1/8 393 (400-1 1/8)
CIRCLING	4400-1 465 (500-1)	4440-1 505 (600-1)	4780-2 1/2 845 (900-2 1/2)	5120-3 1185 (1200-3)

FALLON, NEVADA 39° 25'N-118° 42'W FALLON NAS (VAN VOORHIS FLD) (KNFL)

Amtd 4 02OCT25

TACAN Y RWY 31L/R

SW-4, 16 APR 2026 to 14 MAY 2026

SW-4, 16 APR 2026 to 14 MAY 2026