

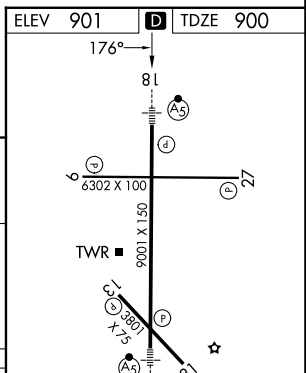
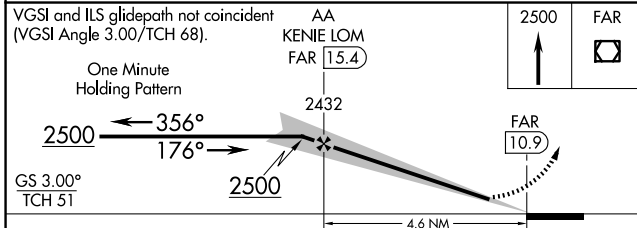
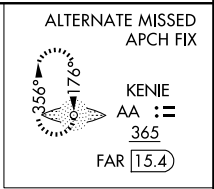
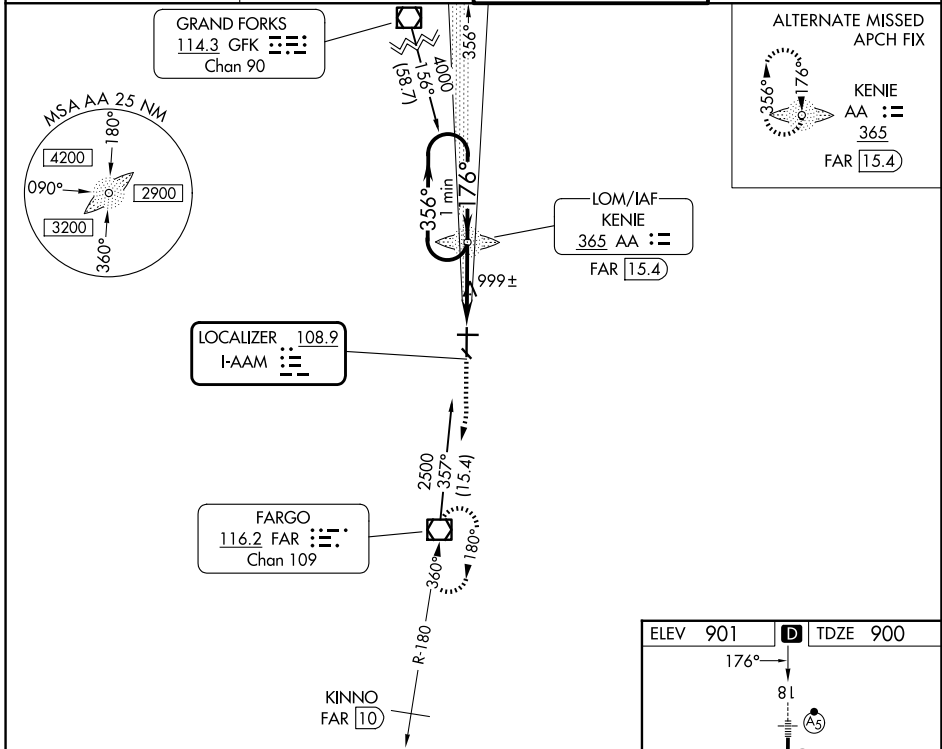
LOC I-AAM <b>108.9</b>	APP CRS <b>176°</b>	Rwy Ldg TDZE Apt Elev <b>9001</b> <b>900</b> <b>901</b>
---------------------------	------------------------	--

# ILS or LOC RWY 18

HECTOR INTL (FAR)

ADF or DME required for procedure entry.	MALSR 	MISSED APPROACH: Climb to 2500 direct FAR VOR/DME and hold.
 For inop MALSR, increase S-ILS 18 Cat E visibility to RVR 4000, and S-LOC 18 Cat E visibility to RVR 5000. * Visibility Cat A/B/C/D RVR 1800 authorized with the use of FD or AP or HUD to DA.		

ATIS <b>124.5 379.2</b>	FARGO APP CON <b>120.4 377.15</b>	FARGO TOWER <b>133.8 290.4</b>	GND CON <b>121.9 348.6</b>
----------------------------	--------------------------------------	-----------------------------------	-------------------------------



CATEGORY	A	B	C	D	E												
S-ILS 18*	1100/24 200 (200-½)																
S-LOC 18	1260/24	360 (400-½)	1260/40 360 (400-¾)														
CIRCLING	1380-1 479 (500-1)	1520-1¾ 619 (700-1¾)	1620-2¼ 719 (800-2¼)	1620-2½ 719 (800-2½)													
	HIRL Rwy 18-36 REIL Rwy 9 and 27 MRL Rwy 9-27 and 13-31 FAF to MAP 4.6 NM																
	<table border="1"> <tr> <td>Knots</td> <td>60</td> <td>90</td> <td>120</td> <td>150</td> <td>180</td> </tr> <tr> <td>Min:Sec</td> <td>4:36</td> <td>3:04</td> <td>2:18</td> <td>1:50</td> <td>1:32</td> </tr> </table>					Knots	60	90	120	150	180	Min:Sec	4:36	3:04	2:18	1:50	1:32
Knots	60	90	120	150	180												
Min:Sec	4:36	3:04	2:18	1:50	1:32												

NC-1, 16 APR 2026 to 14 MAY 2026

NC-1, 16 APR 2026 to 14 MAY 2026