

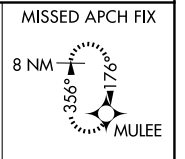
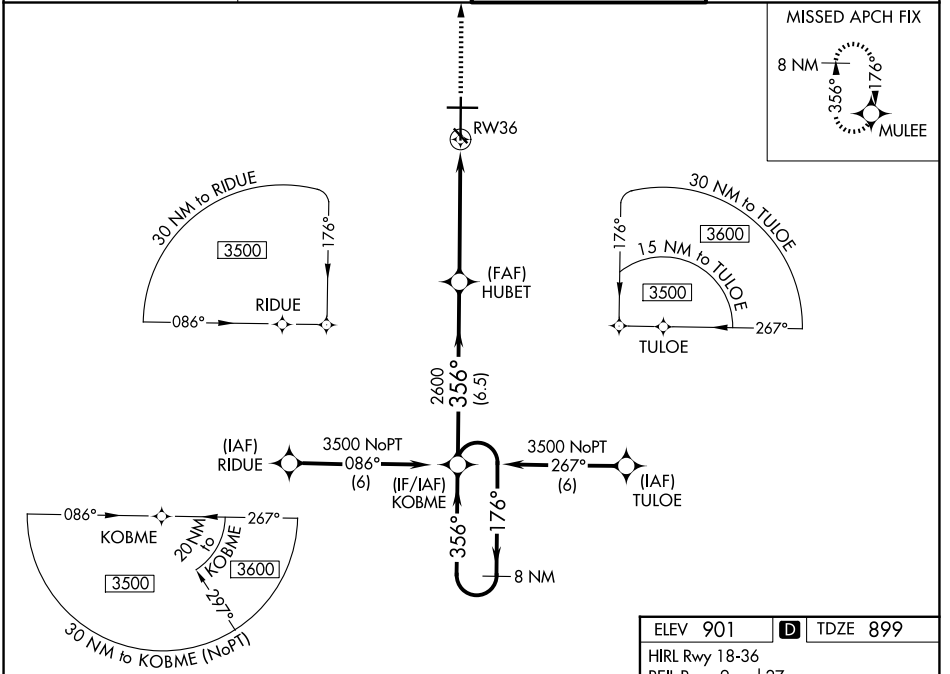
WAAS CH 50106 W36A	APP CRS 356°	Rwy Ldg TDZE Apt Elev	9001 899 901
--	------------------------	-----------------------------	---

RNAV (GPS) RWY 36

HECTOR INTL (F.A.R.)

RNP APCH.	MALSR	MISSED APPROACH: Climb to 3500 direct MULEE and hold.
<p>⚠ Baro-VNAV NA below -16°C (4°F). For inop MALSR, increase LPV Cat E visibility to RVR 4000, and increase LNAV/VNAV and LNAV Cat E visibility to 1½ mile.</p>		

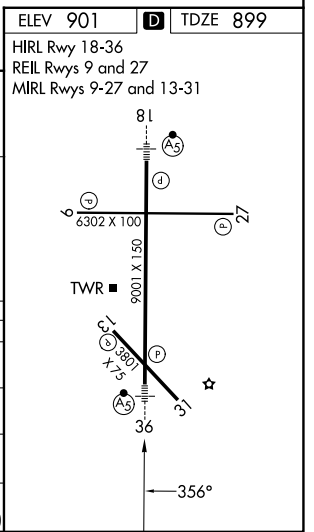
ATIS 124.5 379.2	FARGO APP CON 120.4 377.15	FARGO TOWER 133.8 290.4	GND CON 121.9 348.6
----------------------------	--------------------------------------	-----------------------------------	-------------------------------



VGSI and RNAV glidepath not coincident (VGSI Angle 3.00/TCH 71).

8 NM Holding Pattern	KOBME	HUBET	RWY 36	MULEE
3500 ← 176°	← 356°	← 356°	*1.4 NM to RWY 36	*LNAV only.
GP 3.00°		2600		
TCH 55	6.5 NM	3.7 NM	1.4	

CATEGORY	A	B	C	D	E
LPV DA	1150/24		251 (300-½)		
LNAV/VNAV DA	1360/50		461 (500-1)	1360/60 461 (500-1¼)	
LNAV MDA	1420/24	521 (600-½)	1420/50 521 (600-1)	1420/60	521 (600-1¼)
CIRCLING	1420-1	519 (600-1)	1520-1¾ 619 (700-1¾)	1620-2¼ 719 (800-2¼)	1620-2½ 719 (800-2½)



NC-1, 16 APR 2026 to 14 MAY 2026

NC-1, 16 APR 2026 to 14 MAY 2026