

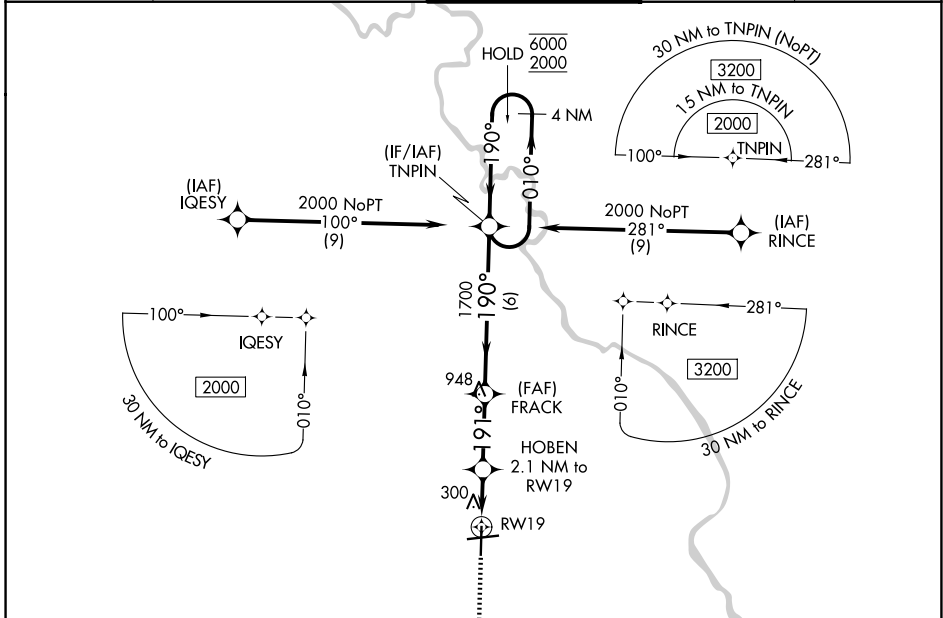
RNAV (GPS) RWY 19

FLORENCE RGNL (FLO)

APP CRS	Rwy Ldg	6000
191°	TDZE	144
	Apt Elev	147

RNP APCH - GPS.	MISSED APPROACH: Climb to 2000 direct PAILS and on track 188° to NUTAL and hold.
<p>▼ Rwy 19 helicopter visibility reduction below 1 SM NA. Straight-in Rwy 19 NA at night. Circling Rwy 1, 19 NA at night.</p>	

ATIS 123.625	FLORENCE APP CON★ 118.6 341.7 (256°-074°) 135.25 316.15 (075°-255°)	FLORENCE TOWER★ 125.1 (CTAF) 0 353.85	GND CON 121.9 353.85	UNICOM 122.95
------------------------	---	---	--------------------------------	-------------------------



SE-2, 16 APR 2026 to 14 MAY 2026

SE-2, 16 APR 2026 to 14 MAY 2026

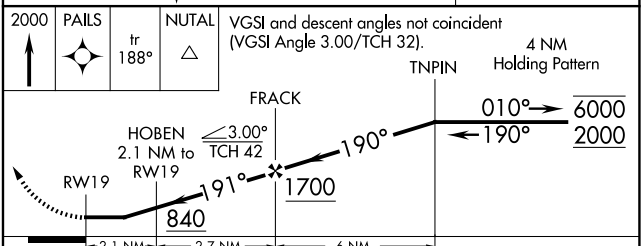
ELEV 147	TDZE 144
-----------------	-----------------

Vertical Profile Details:

- Initial Altitude: 6000 ft
- Altitude at 1 NM: 6502 ft (0.4% UP)
- Altitude at 2 NM: 6000 ft (0.5% UP)
- Altitude at 3 NM: 5000 ft
- Altitude at 4 NM: 4000 ft
- Altitude at 5 NM: 3000 ft
- Altitude at 6 NM: 2000 ft

MIRL Rwy 1-19
REIL Rwys 1, 19 and 27
HIRL Rwy 9-27

2000	PAILS	NUTAL	VGSI and descent angles not coincident (VGSI Angle 3.00/TCH 32).
↑	✦	△	
	tr 188°		



CATEGORY	A	B	C	D
LNAV MDA	560-1	416 (500-1)	560-1 ¹ / ₈	416 (500-1 ¹ / ₈)
CIRCLING	640-1 493 (500-1)	660-1 513 (600-1)	900-2 ¹ / ₄ 753 (800-2 ¹ / ₄)	900-2 ¹ / ₂ 753 (800-2 ¹ / ₂)