

VORTAC FLO <b>115.2</b> Chan <b>99</b>	APP CRS <b>232°</b>	Rwy Ldg TDZE Apt Elev	<b>N/A</b> <b>N/A</b> <b>147</b>
--	------------------------	-----------------------------	--

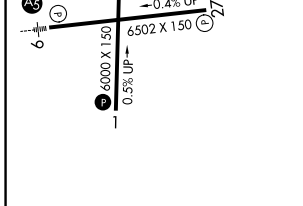
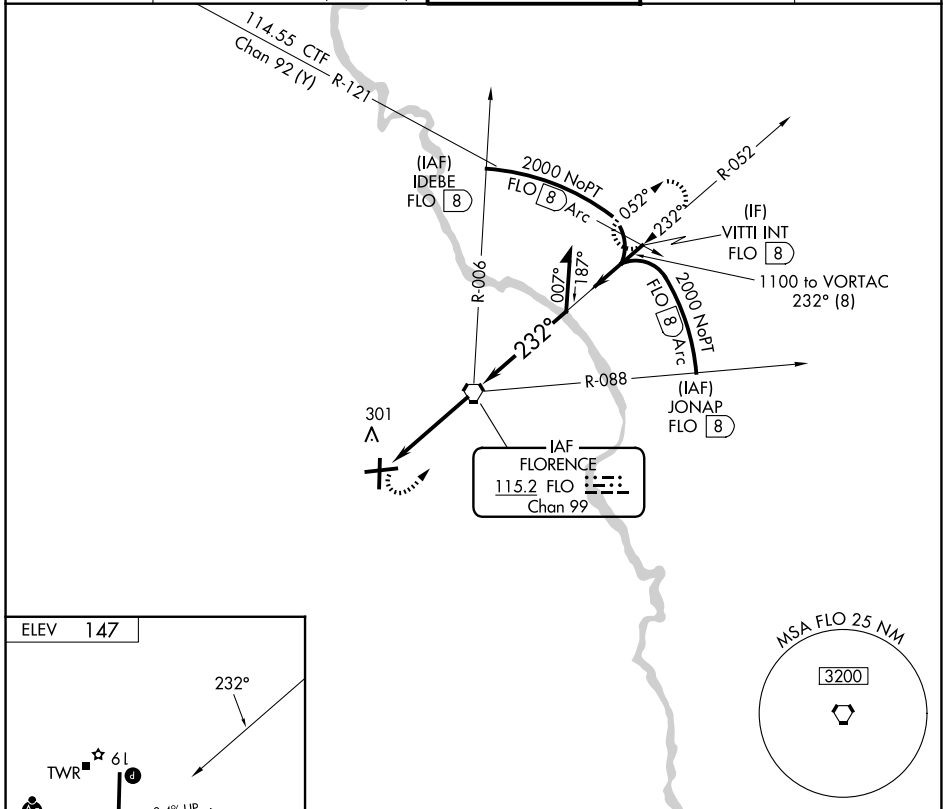
# VOR or TACAN-A

FLORENCE RGNL (FLO)

⚠ When local altimeter setting not received, use Darlington altimeter setting: increase all MDA 60 feet and visibility Circling Cat C and D ¼ SM.  
 ⚠ Helicopter visibility reduction below 1 SM NA.  
 Night Landing: Rwy 1, 19 NA.

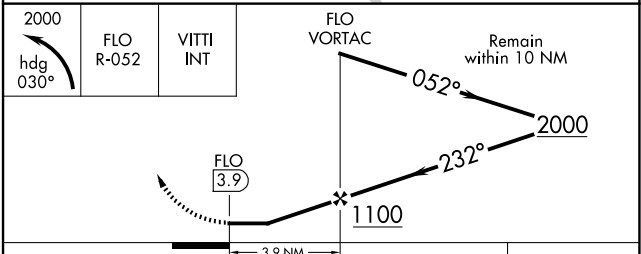
MISSED APPROACH: Climbing left turn to 2000 via heading 030° and FLO VORTAC R-052 to VITTI INT/FLO 8 DME and hold.

ATIS <b>123.625</b>	FLORENCE APP CON* <b>118.6 341.7</b> (256°-074°) <b>135.25 316.15</b> (075°-255°)	FLORENCE TOWER* <b>125.1</b> (CTAF) <b>353.85</b>	GND CON <b>121.9 353.85</b>	UNICOM <b>122.95</b>
------------------------	---	--	--------------------------------	-------------------------



REIL Rws 1, 19 and 27  
 HIRL Rwy 9-27

FAF to MAP 3.9 NM					
Knots	60	90	120	150	180
Min:Sec	3:54	2:36	1:57	1:34	1:18



CATEGORY	A	B	C	D
CIRCLING	640-1 493 (500-1)	660-1 513 (600-1)	900-2¼ 753 (800-2¼)	900-2½ 753 (800-2½)

SE-2, 16 APR 2026 to 14 MAY 2026

SE-2, 16 APR 2026 to 14 MAY 2026