

RNAV (GPS) RWY 15

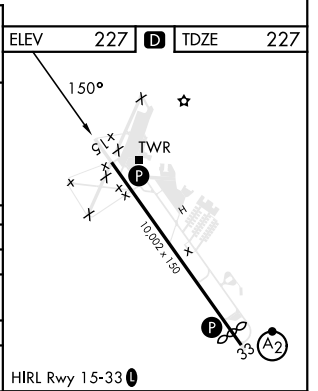
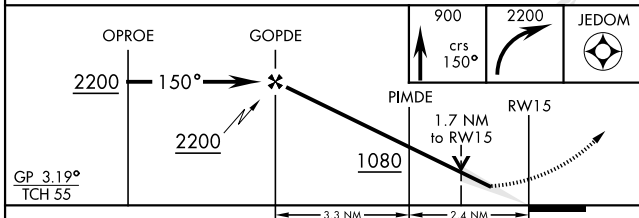
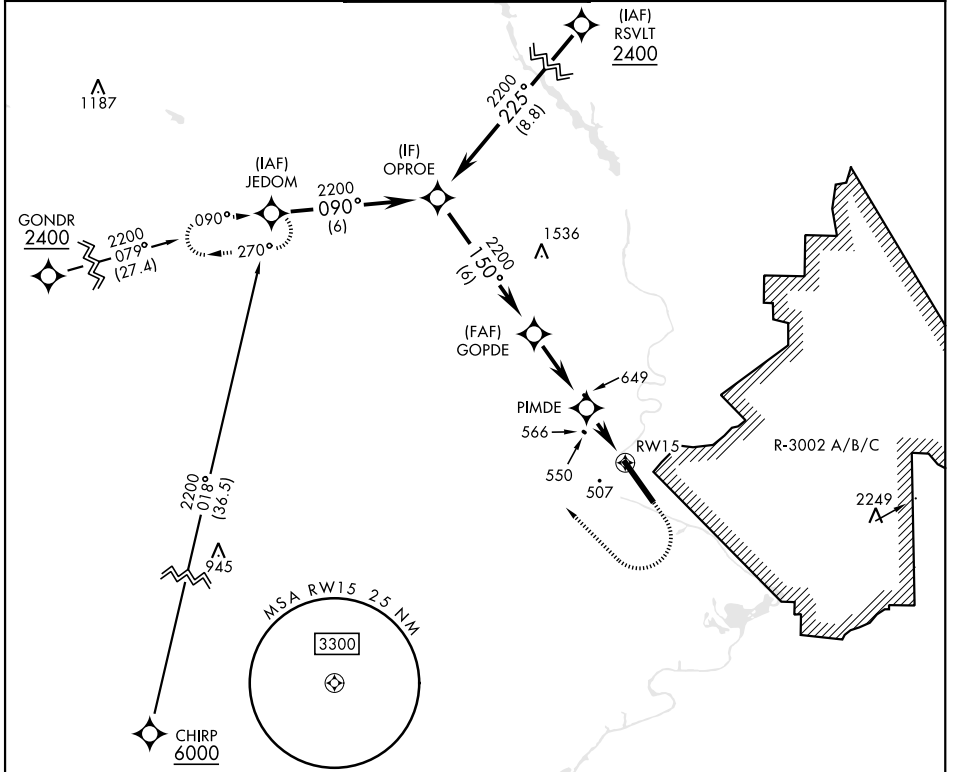
WAAS CH 41028 W15A	APCH CRS 150°	Rwy Idg 10,002 TDZE 227 Arprt Elev 227	[USA]	LAWSON AAF (KLSF)
--	-------------------------	---	-------	-------------------

RNP APCH - GPS

▼ *Circling not authorized NE of Rwy 15-33.
Not authorized when tower closed.
For uncompensated Baro-VNAV systems, LNAV/VNAV below -15°C or above 54°C.

MISSED APPROACH: Climb to 900 then climbing right turn to 2200 direct JEDOM and hold.

ATIS★ 134.375	ATLANTA APP CON 125.5 323.1	TOWER★ 119.05 (CTAF) 269.525	GND CON 121.7 254.25	CLNC DEL 121.7 251.15
-------------------------	---------------------------------------	--	--------------------------------	---------------------------------



CATEGORY	A	B	C	D
LPV DA	494-7/8	267	(300-7/8)	
LNAV/VNAV DA	820-1 3/4	593	(600-1 3/4)	
LNAV MDA	820-1	593 (600-1)	820-1 3/4	593 (600-1 3/4)
CIRCLING*	820-1	860-1	960-2	1080-2 3/4
	593 (600-1)	633 (700-1)	733 (800-2)	853 (900-2 3/4)

FORT BENNING, GEORGIA 32° 20' N-85° 00' W LAWSON AAF (KLSF)

RNAV (GPS) RWY 15

SE-4, 16 APR 2026 to 14 MAY 2026

SE-4, 16 APR 2026 to 14 MAY 2026