

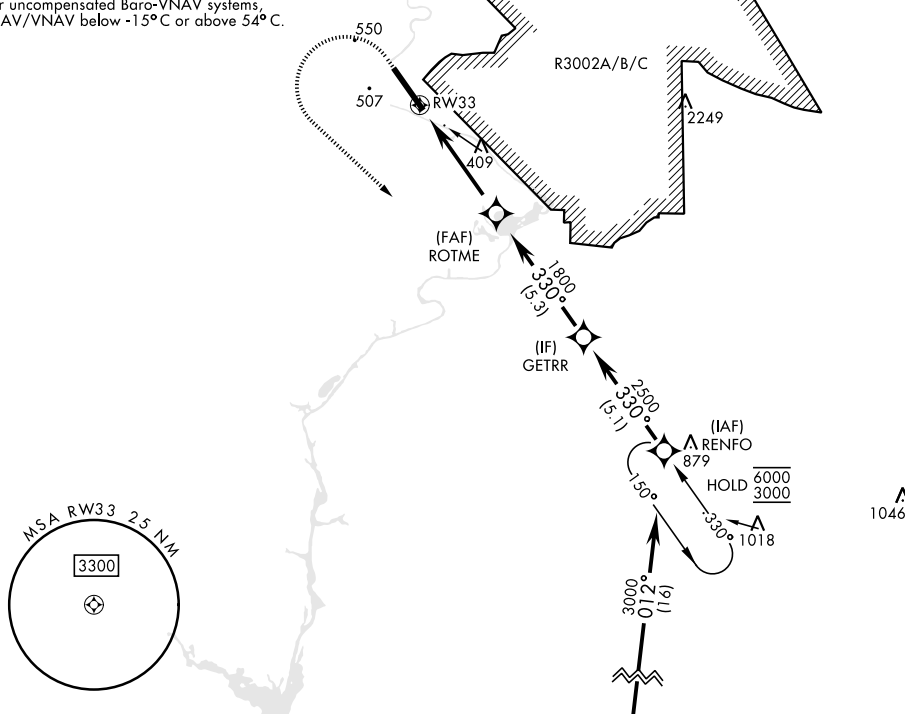
# RNAV (GPS) RWY 33

WAAS CH <b>67545</b> <b>W33A</b>	APCH CRS <b>330°</b>	Rwy Idg TDZE <b>227</b> Arpt Elev <b>227</b>	[USA]	LAWSON AAF (KLSF)
--	-------------------------	--	-------	-------------------

RNP APCH - GPS	SALSF <b>(A2)</b>	MISSED APPROACH: Climb to 800 then climbing left turn to 3000 direct RENFO and hold.
----------------	----------------------	--

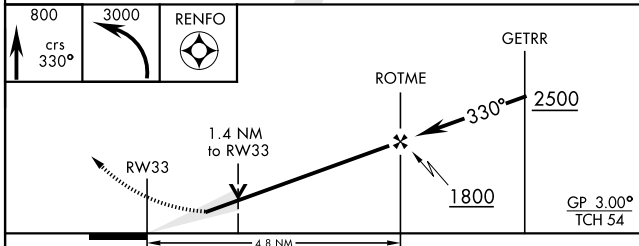
ATIS★ <b>134.375</b>	ATLANTA APP CON <b>125.5 323.1</b>	TOWER★ <b>119.05 (CTAF) 269.525</b>	GND CON <b>121.7 254.25</b>	CLNC DEL <b>121.7 251.15</b>
-------------------------	---------------------------------------	--	--------------------------------	---------------------------------

For uncompensated Baro-VNAV systems, LNAV/VNAV below -15°C or above 54°C.



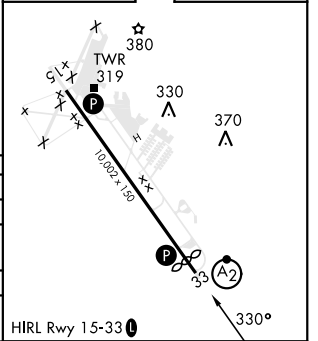
SE-4, 16 APR 2026 to 14 MAY 2026

SE-4, 16 APR 2026 to 14 MAY 2026



(IAF) SAWES	ELEV 227	TDZE 227
-------------	----------	----------

CATEGORY	A	B	C	D
LPV DA	427/40	200	(200-¾)	
LNAV/VNAV DA*	701/60	474	(500-1½)	
LNAV MDA**	740/40 513 (600-¾)	740-1¼ 513 (600-1¼)		
CIRCLING***	820-1	860-1	960-2	1080-2¾
	593 (600-1)	633 (700-1)	733 (800-2)	853 (900-2¾)



# RNAV (GPS) RWY 33