

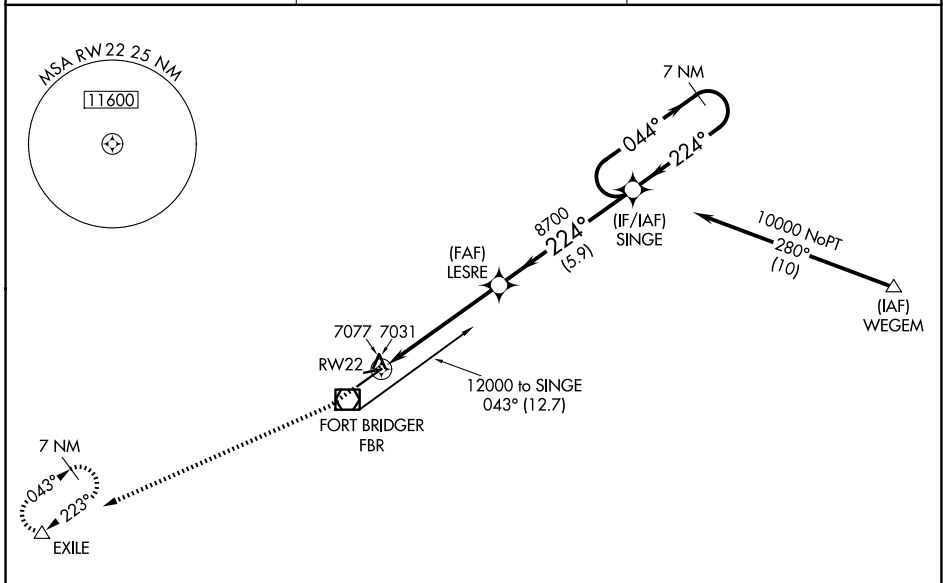
WAAS CH <b>78234</b> <b>W22A</b>	APP CRS <b>224°</b>	Rwy Ldg TDZE Apt Elev	<b>6404</b> <b>7023</b> <b>7038</b>
--	------------------------	-----------------------------	---

# RNAV (GPS) RWY 22

FORT BRIDGER (FBR)

RNP APCH.	<p><b>⚠</b> Circling NA to Rwy 7 and 25. When local altimeter setting not received, use Evanston altimeter setting and increase all MDAs 100 feet, increase LNAV Cats C and D visibility <math>\frac{1}{8}</math> SM, Circling Cat C visibility <math>\frac{1}{4}</math> SM and Cat D visibility <math>\frac{1}{2}</math> SM.</p>	<p>MISSED APPROACH: Climb to 7500, then climbing right turn to 12000 direct EXILE and hold, continue climb-in-hold to 12000.</p>
-----------	---	--

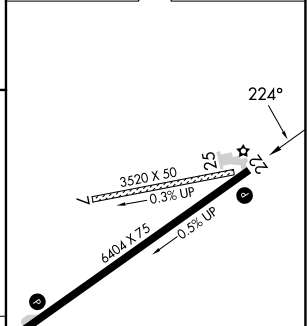
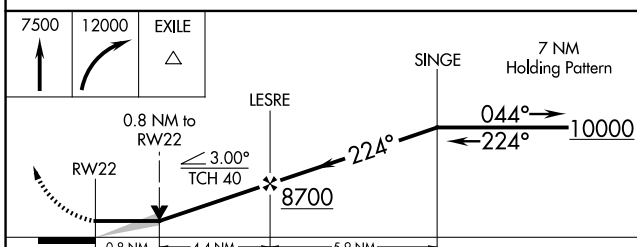
AWOS-3PT <b>118.8</b>	SALT LAKE CENTER <b>124.35 353.5</b>	UNICOM <b>122.8 (CTAF) 0</b>
--------------------------	---	---------------------------------



NW-1, 16 APR 2026 to 14 MAY 2026

NW-1, 16 APR 2026 to 14 MAY 2026

ELEV 7038	TDZE 7023
-----------	-----------



CATEGORY	A	B	C	D
LP MDA	7300-1		277 (300-1)	
LNAV MDA	7340-1		317 (400-1)	
CIRCLING	7400-1 362 (400-1)	7500-1 462 (500-1)	7660-1 $\frac{3}{4}$ 622 (700-1 $\frac{3}{4}$ )	7680-2 642 (700-2)

REIL Rwy 4 and 22 0  
MRL Rwy 4-22 0