

WRIGHTSTOWN, NEW JERSEY

ILS or LOC RWY 24

LOC I-JTQ 110.1	APCH CRS 238°	Rwy ldg TDZE Arpt Elev	10,456 117 141
---------------------------	-------------------------	------------------------------	---

(USAF)

MC GUIRE FIELD (JOINT BASE MC GUIRE DIX LAKEHURST) (KWRI)

▽ * When ALS inop, increase RVR to 40, vis to 3/4 mile. +RVR 18 authorized with use of FD or AP or HUD to DA.
 ** When ALS inop, increase CAT AB RVR to 55, vis to 1 mile, CAT CDE vis to 1 3/8 miles.
 *** Circling NA SE of Rwy 24 and E of Rwy 36 when R-5001 A/B Active.

ALSF-1 MISSED APPROACH: Climb to 2000 via GXU R-236 to CISON and hold.

ATIS 110.6 270.1	MC GUIRE APP CON/DEP CON 126.475 363.8	TOWER 118.65 255.6	GND CON 121.8 275.8	PAR
----------------------------	--	------------------------------	-------------------------------	-----

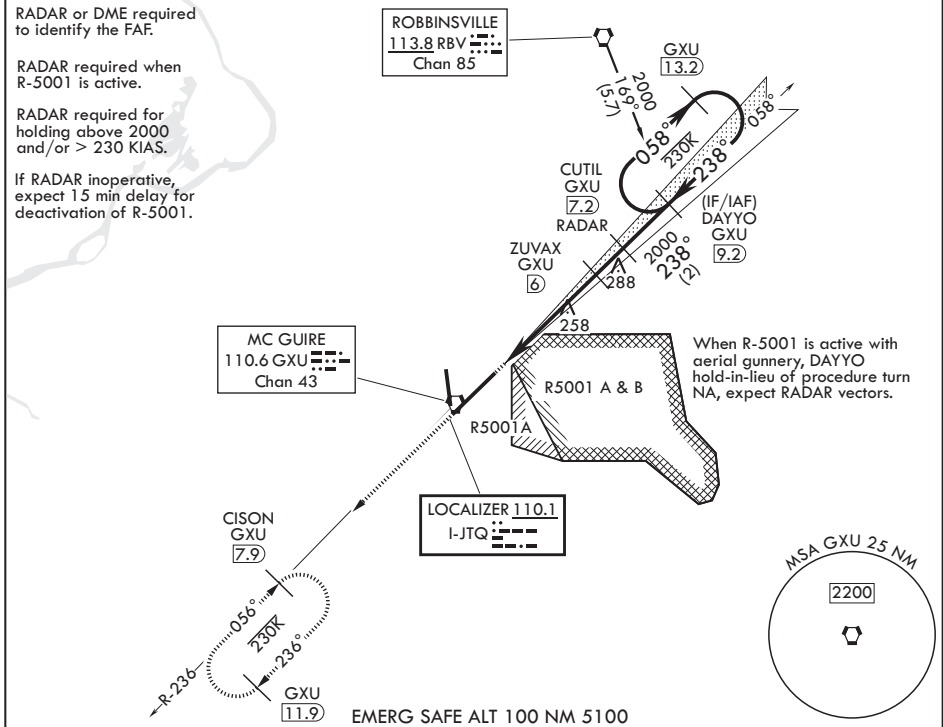
RADAR or DME required to identify the FAF.

RADAR required when R-5001 is active.

RADAR required for holding above 2000 and/or > 230 KIAS.

If RADAR inoperative, expect 15 min delay for deactivation of R-5001.

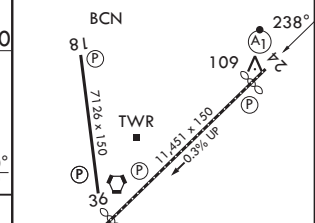
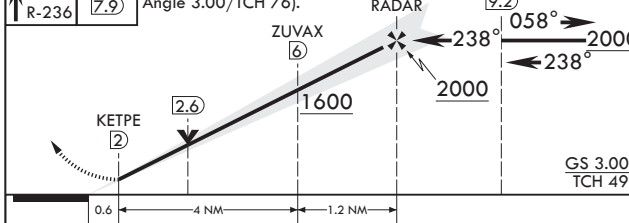
NE-2, 16 APR 2026 to 14 MAY 2026



When R-5001 is active with aerial gunnery, DAYYO hold-in-lieu of procedure turn NA, expect RADAR vectors.

NE-2, 16 APR 2026 to 14 MAY 2026

2000 GXU R-236	CISON GXU 7.9	VGSI and ILS glidepath not coincident (VGSI Angle 3.00/TCH 76).	CUTIL RADAR 7.2	DAYYO 9.2	ELEV 141	See Supp for declared dist.	TDZE 117
----------------	---------------	---	-----------------	-----------	----------	-----------------------------	----------



CATEGORY	A	B	C	D	E
S-ILS 24*†	317/24		200	(200-½)	
S-LOC 24**	580/24	463 (500-½)	580/50	463	(500-1)
CIRCLING***	680-1	539 (600-1)	700-1½ 559 (600-1½)	700-2 559 (600-2)	1200-3 1059 (1100-3)

FAF to MAP 5.2 NM					
Knots	60	90	120	150	180
Min:Sec	5:12	3:28	2:36	2:05	1:44

WRIGHTSTOWN, NEW JERSEY

MC GUIRE FIELD (JOINT BASE MC GUIRE DIX LAKEHURST) (KWRI)

Amdt 6 18MAY23

40°01'N - 74°36'W

ILS or LOC RWY 24