

WRIGHTSTOWN, NEW JERSEY

RNAV (GPS) RWY 6

WAAS CH 91356 W06A	APCH CRS 058°	Rwy ldg TDZE Arpt Elev	11,009 131 141
--------------------------	------------------	------------------------------	----------------------

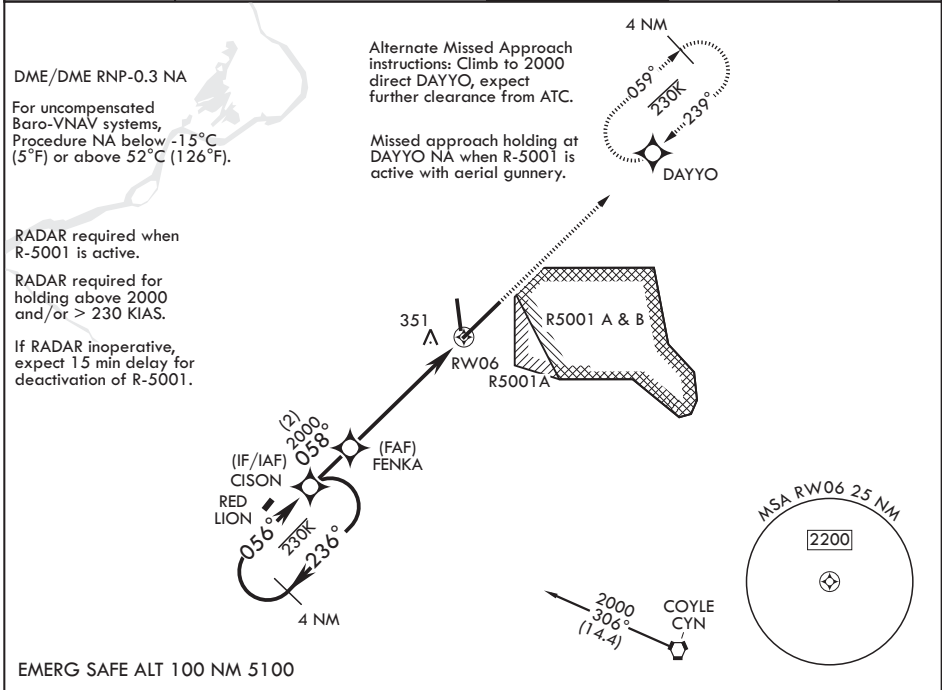
(USAF)

MC GUIRE FIELD (JOINT BASE MC GUIRE DIX LAKEHURST) (KWRI)

V * When TDZ/CL lights inop, increase RVR to 24. When ALS inop, increase RVR to 40, vis to 3/4 mile.
 ** When ALS inop, increase vis to 1 1/4 miles.
 *** When ALS inop, increase CAT AB RVR to 55, vis to 1 mile; CAT CDE vis to 1 1/4 miles.
 **** Circling NA SE of Rwy 24 and E of Rwy 36 when R-5001 A/B Active.

ALSF-2 MISSED APPROACH: Climb to 2000 direct DAYYO and hold.

ATIS 110.6 270.1	MC GUIRE APP CON/DEP CON 126.475 363.8	TOWER 118.65 255.6	GND CON 121.8 275.8	PAR
---------------------	---	-----------------------	------------------------	-----



NE-2, 16 APR 2026 to 14 MAY 2026

NE-2, 16 APR 2026 to 14 MAY 2026

4 NM Holding Pattern 2000 ← 236° → CISON → 058° → FENKA → 056° → 2000 GP 3.00° TCH 56 5.7 NM 1.1 NM to RW06 2000 DAYYO ELEV 141 See Supp for declared dist. TDZE 131 81 BCN TWR 71.96 x 150 11.451 x 150 0.3% DOWN 058° HIRL all rwys REIL Rwys 18 and 36 TDZL/CL Rwy 6	VGSI and RNAV glidepath not coincident (VGSI angle 3.00/TCH 76).				
	4 NM Holding Pattern 2000 ← 236° → CISON → 058° → FENKA → 056° → 2000 GP 3.00° TCH 56 5.7 NM 1.1 NM to RW06 2000 DAYYO ELEV 141 See Supp for declared dist. TDZE 131 81 BCN TWR 71.96 x 150 11.451 x 150 0.3% DOWN 058° HIRL all rwys REIL Rwys 18 and 36 TDZL/CL Rwy 6	A	B	C	D
CATEGORY					
LPV DA*	331/18		200	(200-½)	
LNAV/VNAV DA**	560/40		429	(500-¾)	
LNAV MDA***	560/24	429 (500-½)	560/40	429 (500-¾)	
CIRCLING****	680-1	539 (600-1)	700-1½ (600-1½)	700-2 (600-2)	1200-3 (1100-3)

WRIGHTSTOWN, NEW JERSEY

MC GUIRE FIELD (JOINT BASE MC GUIRE DIX LAKEHURST) (KWRI)

Amdt 7 18MAY23

40°01'N - 74°36'W

RNAV (GPS) RWY 6