

WRIGHTSTOWN, NEW JERSEY

VOR/DME or TACAN RWY 36

VORTAC GXU 110.6 Chan 43	APCH CRS 021°	Rwy Idg TDZE Arprt Elev	7126 129 141
---------------------------------------	-------------------------	-------------------------------	---

(USAF)

MC GUIRE FIELD (JOINT BASE MC GUIRE DIX LAKEHURST) (KWRI)

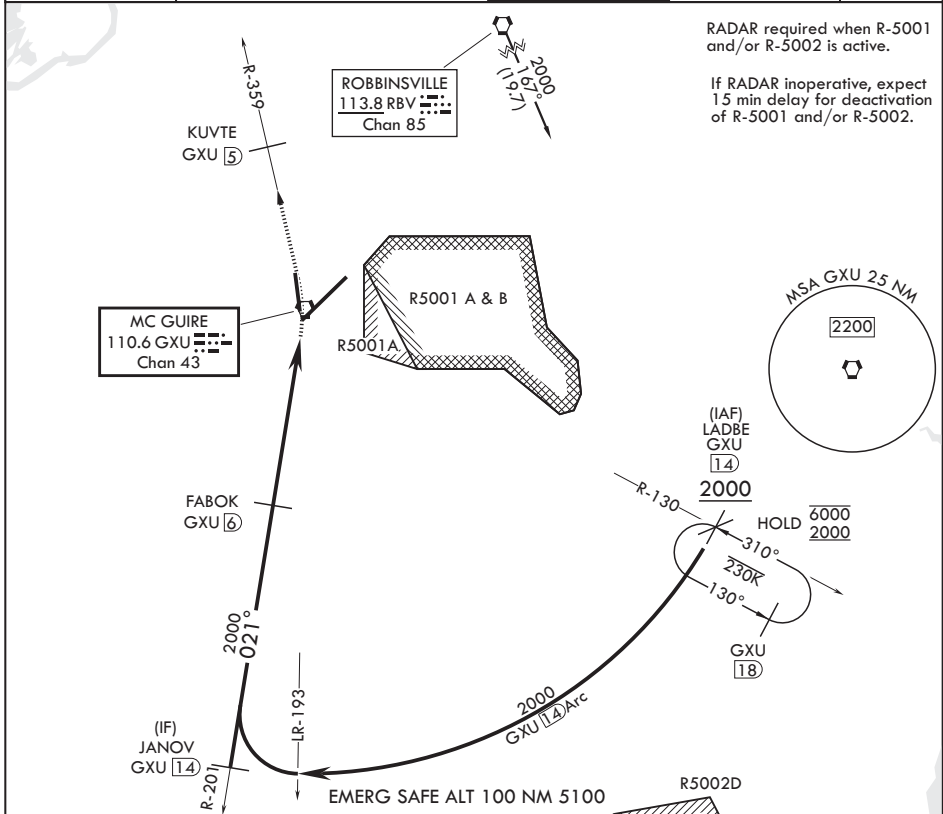
▼ * Circling NA SE of Rwy 24 and E of Rwy 36 when R-5001 A/B Active.

MISSED APPROACH: Climb to 2000 via GXU R-359 to KUVTE, expect further clearance with ATC.

ATIS 110.6 270.1	MC GUIRE APP CON/DEP CON 126.475 363.8	TOWER 118.65 255.6	GND CON 121.8 275.8	PAR
----------------------------	--	------------------------------	-------------------------------	-----

RADAR required when R-5001 and/or R-5002 is active.

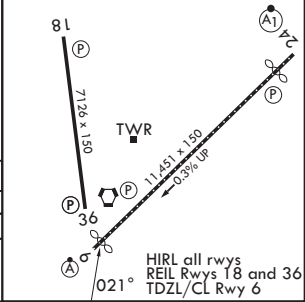
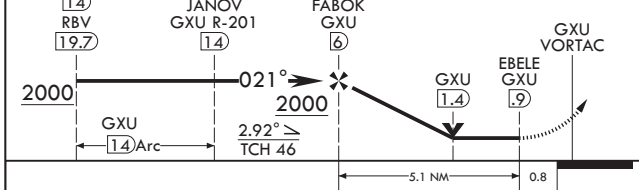
If RADAR inoperative, expect 15 min delay for deactivation of R-5001 and/or R-5002.



NE-2, 16 APR 2026 to 14 MAY 2026

NE-2, 16 APR 2026 to 14 MAY 2026

LADBE GXU R-130 14 RBV 19.7	JANOV GXU R-201 14	FABOK GXU 6	2000 GXU R-359	KUVTE GXU 5	ELEV 141	See Supp for declared dist.	TDZE 129
--	------------------------------	-----------------------	-------------------	--------------------------	----------	-----------------------------	----------



CATEGORY	A	B	C	D	E
S-36	600-1	471 (500-1)	600-1½	471	(500-1½)
CIRCLING*	680-1	539 (600-1)	700-1½ 559 (600-1½)	700-2 559 (600-2)	1200-3 1059 (1100-3)

WRIGHTSTOWN, NEW JERSEY

MC GUIRE FIELD (JOINT BASE MC GUIRE DIX LAKEHURST) (KWRI)

Amdt 7 18MAY23

40°01'N - 74°36'W

VOR/DME or TACAN RWY 36