

VOR/DME or TACAN RWY 6

MC GUIRE FLD,

(JOINT BASE MC GUIRE DIX LAKEHURST) (KWRI)

VORTAC GXU 110.6 Chan 43	APCH CRS 044°	Rwy ldg 11,009 TDZE 131 Arpt Elev 141
--	-------------------------	--

[USAF]

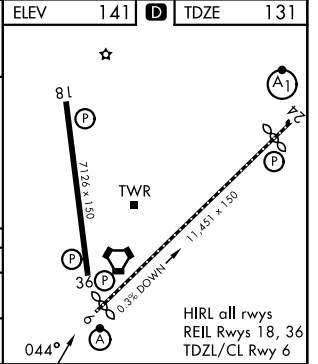
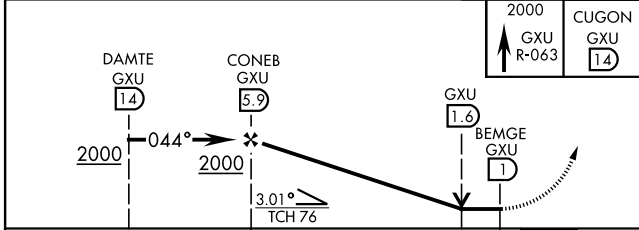
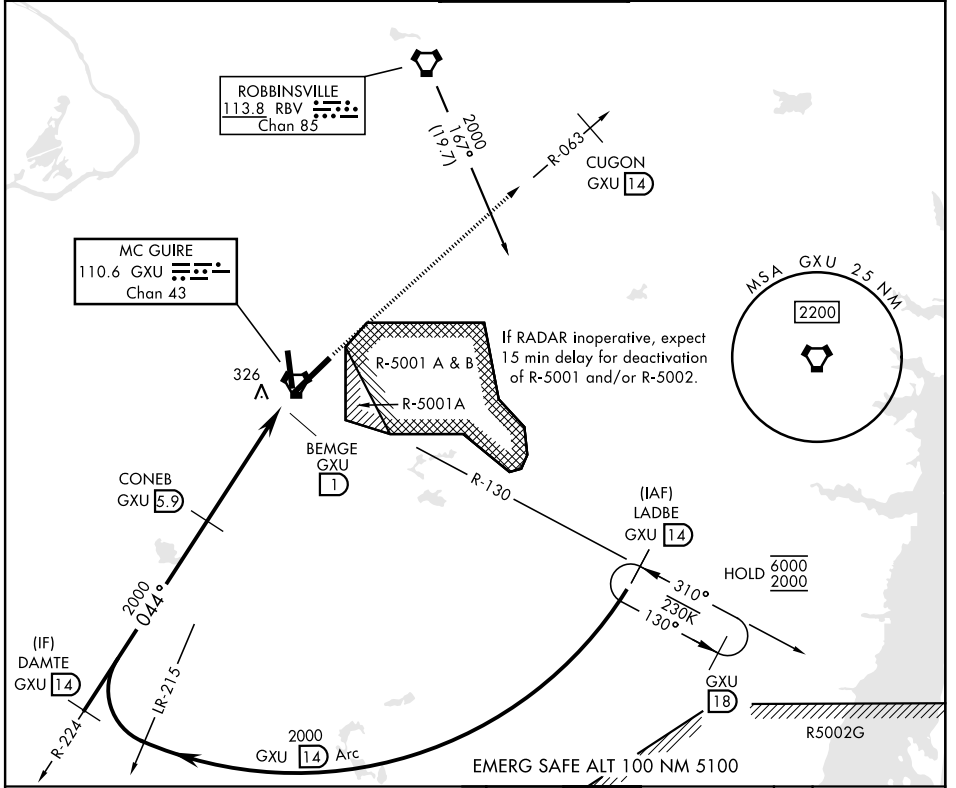
RADAR required when R-5001 and/or R-5002 is active.



MISSED APPROACH: Climb to 2000 via GXU VORTAC R-063 to CUGON, expect further clearance from ATC.

▼ * When ALS inop, increase CAT AB RVR to 55 and vis to 1 mile, CAT CDE vis to 1 3/8 miles.
** Circling NA SE of RWY 24 and E of RWY 36 when R-5001 A/B active.

ATIS 110.6 270.1	MC GUIRE APP CON/DEP CON 126.475 363.8	TOWER 118.65 255.6	GND CON 121.8 275.8	PAR
----------------------------	--	------------------------------	-------------------------------	-----



CATEGORY	A	B	C	D	E
S-6 *	640/24 509 (500-1/2)		640/55 509		(500-1)
CIRCLING **	680-1 539 (600-1)		700-1 1/2 559 (600-1 1/2)	700-2 559 (600-2)	1200-3 1059 (1100-3)

VOR/DME or TACAN RWY 6

NE-2, 16 APR 2026 to 14 MAY 2026

NE-2, 16 APR 2026 to 14 MAY 2026