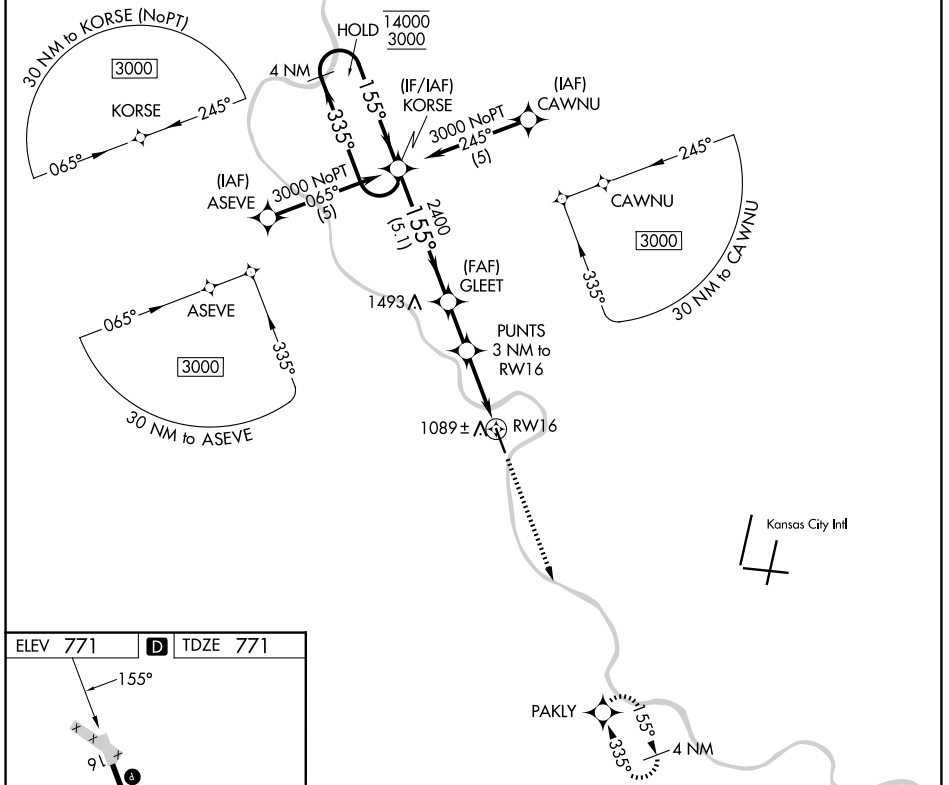


APP CRS	Rwy Ldg	5318
155°	TDZE	771
	Apt Elev	771

RNAV (GPS) RWY 16

SHERMAN AAF (FLV)

RNP APCH - GPS.		MISSED APPROACH: Climb to 3100 direct PAKLY and hold.
<p>⚠ Circling NA west of Rwy 16-34. Procedure NA at night. Rwy 16 helicopter visibility reduction below 1 SM NA. Use Kansas City Intl altimeter setting.</p>		
MCI ASOS	KANSAS CITY APP CON	CTAF
128.375	124.7 284.7	126.20



NC-2, 16 APR 2026 to 14 MAY 2026

NC-2, 16 APR 2026 to 14 MAY 2026

ELEV 771	D	TDZE 771
----------	----------	----------

HIRL Rwy 16-34 **Ⓛ**

4 NM Holding Pattern

VGSI and descent angles not coincident (VGSI Angle 3.00/TCH 40).

3100 PAKLY

CATEGORY	A	B	C	D
LNAV MDA	1520-1 749 (800-1)	1520-1¼ 749 (800-1¼)	1520-2 749 (800-2)	NA
CIRCLING	1520-1 749 (800-1)	1520-1¼ 749 (800-1¼)	1520-2¼ 749 (800-2¼)	NA