

(RACER8.MCI) 24137

# RACER EIGHT DEPARTURE

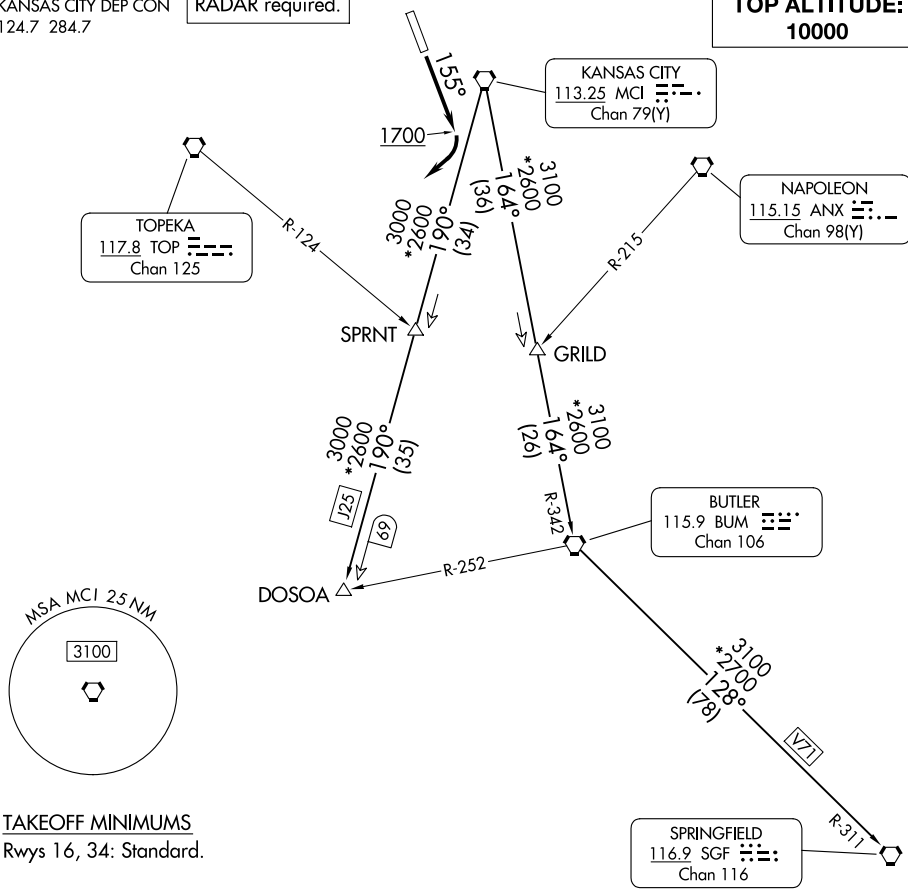
AL-152 (FAA)

SHERMAN AAF (F'L V)  
FORT LEAVENWORTH, KANSAS

KANSAS CITY DEP CON  
124.7 284.7

RADAR required.

**TOP ALTITUDE:**  
**10000**



NC-2, 16 APR 2026 to 14 MAY 2026

NC-2, 16 APR 2026 to 14 MAY 2026

**TAKEOFF MINIMUMS**  
Rwys 16, 34: Standard.

NOTE: Chart not to scale.

## DEPARTURE ROUTE DESCRIPTION

**TAKEOFF RUNWAY 16:** Climb on heading 155° to 1700 before turning southwest, thence. . . .climb on assigned heading for RADAR vectors to appropriate route. Maintain 10000 or as assigned by ATC, expect filed altitude 10 minutes after departure.

**TAKEOFF RUNWAY 34:** Climb on assigned heading for RADAR vectors to appropriate route. Maintain 10000 or as assigned by ATC, expect filed altitude 10 minutes after departure.

**BUTLER TRANSITION (RACER8.BUM):** From over MCI VORTAC on MCI R-164 and BUM R-342 to BUM VORTAC.

**DOSOA TRANSITION (RACER8.DOSOA):** From over MCI VORTAC on MCI R-190 to DOSOA.

**SPRINGFIELD TRANSITION (RACER8.SGF):** From over MCI VORTAC on MCI R-164 and BUM R-342 to BUM VORTAC, then on BUM R-128 and SGF R-311 to SGF VORTAC.

# RACER EIGHT DEPARTURE

(RACER8.MCI) 05OCT23

FORT LEAVENWORTH, KANSAS  
SHERMAN AAF (F'L V)