

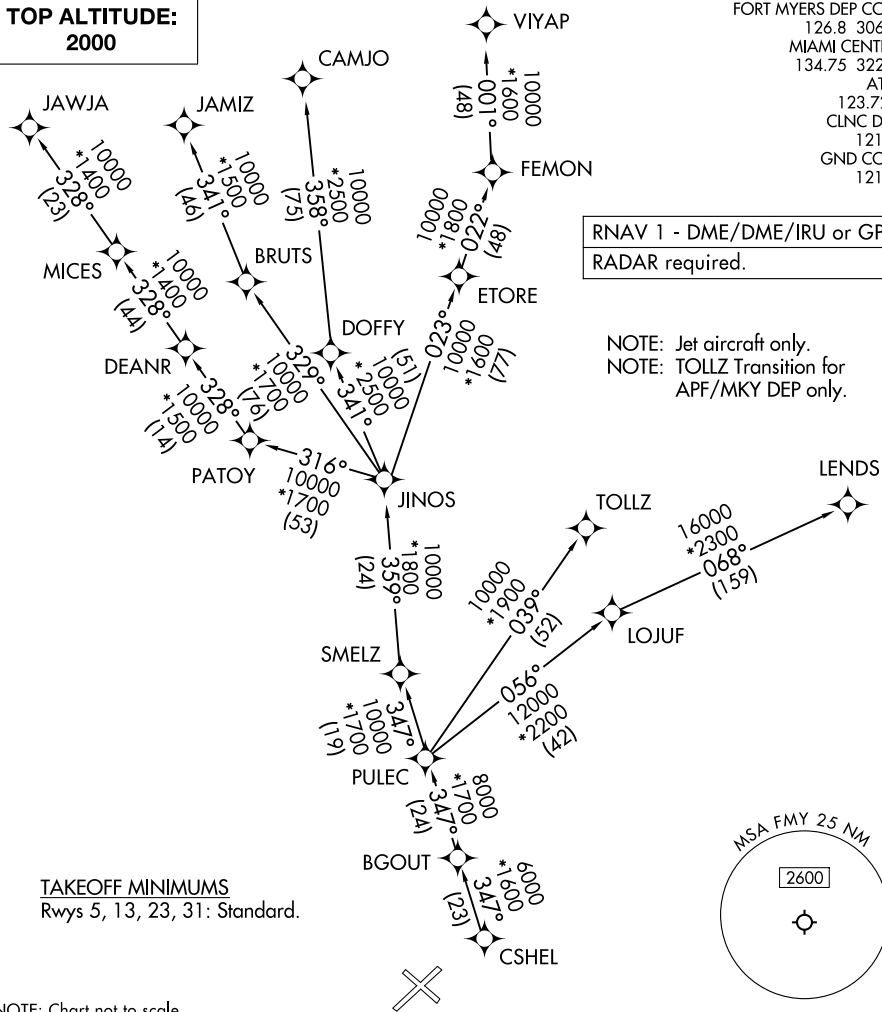
CSHEL EIGHT DEPARTURE (RNAV)

**TOP ALTITUDE:
2000**

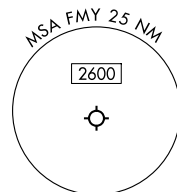
FORT MYERS DEP CON*
 126.8 306.2
 MIAMI CENTER
 134.75 322.5
 ATIS
 123.725
 CLNC DEL
 121.7
 GND CON
 121.7

RNAV 1 - DME/DME/IRU or GPS.
 RADAR required.

NOTE: Jet aircraft only.
 NOTE: TOLLZ Transition for
 APF/MKY DEP only.



TAKEOFF MINIMUMS
 Rws 5, 13, 23, 31: Standard.



NOTE: Chart not to scale.

DEPARTURE ROUTE DESCRIPTION

TAKEOFF ALL RUNWAYS: Climb on assigned heading for vectors to CSHEL on assigned transition. Maintain 2000. Expect filed altitude 10 minutes after departure.

- CAMJO TRANSITION (CSHEL8.CAMJO)
- JAMIZ TRANSITION (CSHEL8.JAMIZ)
- JAWJA TRANSITION (CSHEL8.JAWJA)
- LEND S TRANSITION (CSHEL8.LEND S)
- TOLLZ TRANSITION (CSHEL8.TOLLZ)
- VIYAP TRANSITION (CSHEL8.VIYAP)

CSHEL EIGHT DEPARTURE (RNAV)

SE-3, 16 APR 2026 to 14 MAY 2026

SE-3, 16 APR 2026 to 14 MAY 2026