

WAAS CH 72624 W05A	APP CRS 051°	Rwy Ldg 5545 TDZE 15 Apt Elev 17
--	------------------------	---

RNAV (GPS) RWY 5

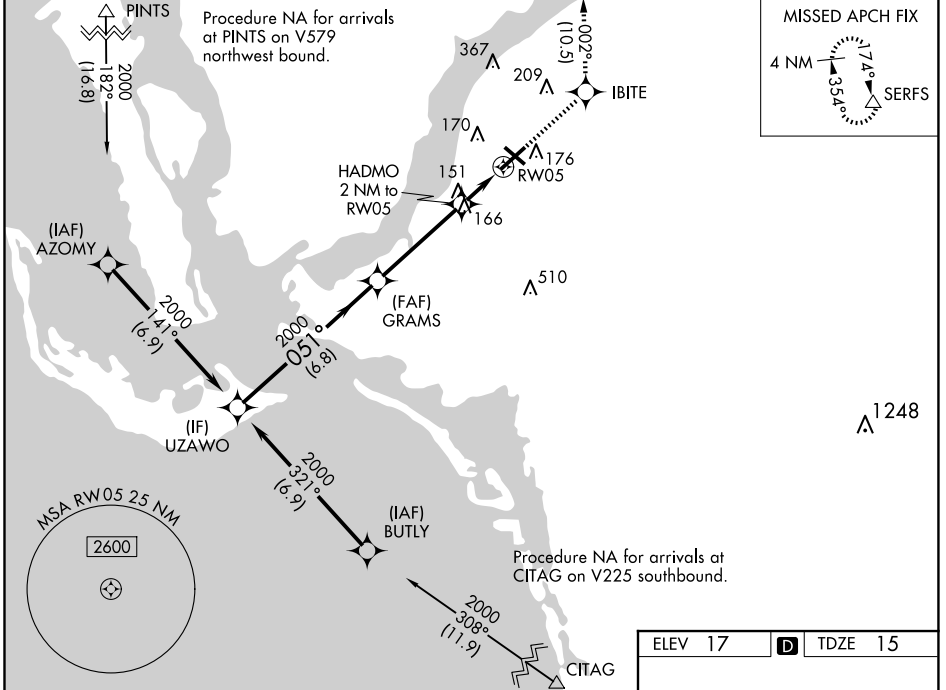
PAGE FLD (FMY)

RNP APCH.

When Circling to Rwy 31 at night, operational VGSI required, remain on or above VGSI glidepath until threshold. Rwy 5 helicopter visibility reduction below 3/4 SM NA. For uncompensated Baro-VNAV systems, LNAV/VNAV NA below 4°C or above 54°C.

MISSED APPROACH: Climb to 2600 direct IBITE and on track 002° to SERFS and hold.

ATIS 123.725	FORT MYERS APP CON ★ 125.15 306.2 (Rwys 5, 13) 126.8 306.2 (Rwys 23, 31)	PAGE TOWER ★ 119.0 (CTAF) 306.95	GND CON 121.7	CLNC DEL 121.7
------------------------	--	---	-------------------------	--------------------------



SE-3, 16 APR 2026 to 14 MAY 2026

SE-3, 16 APR 2026 to 14 MAY 2026

	ELEV 17	TDZE 15
	IBITE	SERFS
	↑	tr 002°
	GRAMS	
	HADMO 2 NM to RW05	*LNAV only.
	*1.1 NM to RW05	
	RW05	
	UZAWO	
	2000	
	051°	
	2000	
	*700	
	6.8 NM	4.1 NM
	0.9 NM	1.1 NM
GP 3.00°		
TCH 53		
CATEGORY	A	B
LPV DA		265-3/4 250 (300-3/4)
LNAV/VNAV DA		317-7/8 302 (300-7/8)
LNAV MDA	420-1 405 (500-1)	420-1 1/8 405 (500-1 1/8)
C CIRCLING	540-1 523 (600-1)	600-1 1/2 583 (600-1 1/2) 680-2 663 (700-2)

