

(TYNEE.TYNEE4) 25163

AL-154 (FAA)

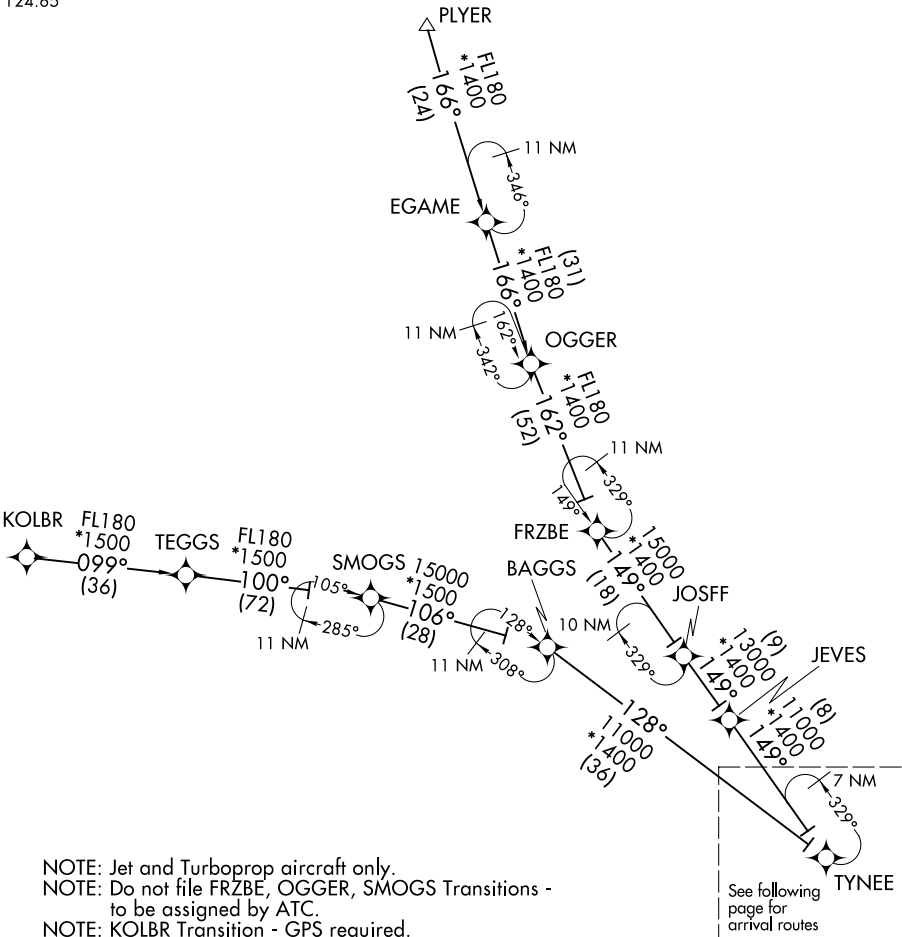
TYNEE FOUR ARRIVAL (RNAV) Transition Routes

FORT MYERS, FLORIDA

FORT MYERS APP CON *
134.425 306.2
FMY ATIS
123.725
RSW D-ATIS
124.65

RNAV 1 - DME/DME/IRU or GPS.
From KOLBR: RNAV 1-GPS.

RADAR required.



NOTE: Jet and Turboprop aircraft only.
NOTE: Do not file FRZBE, OGGER, SMOGS Transitions -
to be assigned by ATC.
NOTE: KOLBR Transition - GPS required.

NOTE: Chart not to scale

- FRZBE TRANSITION (FRZBE.TYNEE4)
- KOLBR TRANSITION (KOLBR.TYNEE4)
- OGGER TRANSITION (OGGER.TYNEE4)
- PLYER TRANSITION (PLYER.TYNEE4)
- SMOGS TRANSITION (SMOGS.TYNEE4)

(CONTINUED ON FOLLOWING PAGE)

TYNEE FOUR ARRIVAL (RNAV) Transition Routes

FORT MYERS, FLORIDA

(TYNEE.TYNEE4) 12JUN25

SE-3, 16 APR 2026 to 14 MAY 2026

SE-3, 16 APR 2026 to 14 MAY 2026

(TYNEE.TYNEE4) 25163

AL-154 (FAA)

TYNEE FOUR ARRIVAL (RNAV) Arrival Routes

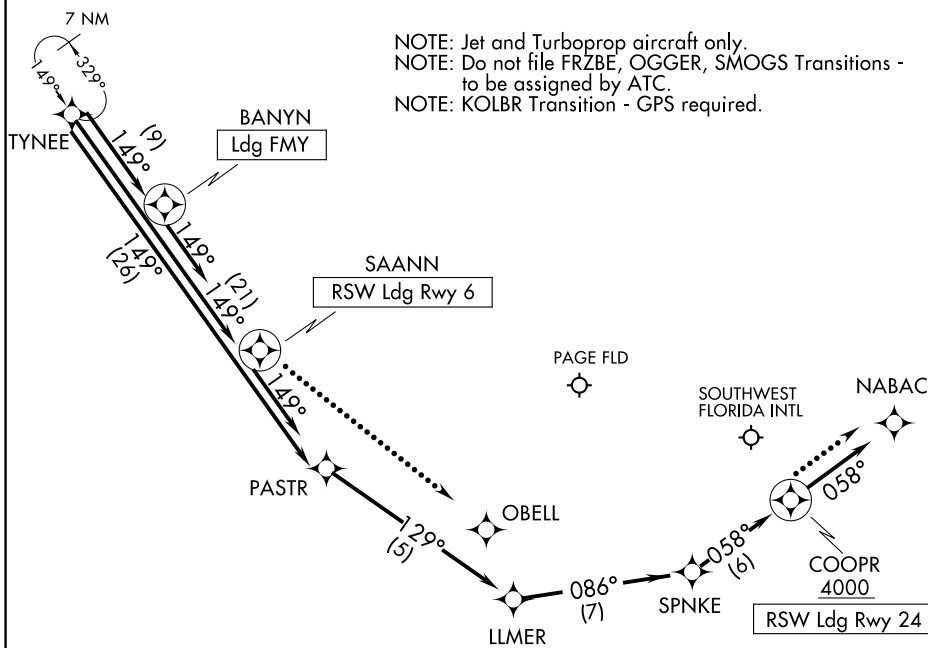
FORT MYERS, FLORIDA

FORT MYERS APP CON ★
 134.425 306.2
 FMY ATIS
 123.725
 RSW D-ATIS
 124.65

RNAV 1 - DME/DME/IRU or GPS.
 From KOLBR: RNAV 1-GPS.

RADAR required.

NOTE: Jet and Turboprop aircraft only.
 NOTE: Do not file FRZBE, OGGER, SMOGS Transitions -
 to be assigned by ATC.
 NOTE: KOLBR Transition - GPS required.



NOTE: Chart not to scale.

ARRIVAL ROUTE DESCRIPTION

LANDING RSW RUNWAY 6: From TYNEE on track 149° to SAANN, then on track 149°. Expect RADAR vectors to final approach course.

LANDING RSW RUNWAY 24: From TYNEE on track 149° to PASTR, then on track 129° to LLMER, then on track 086° to SPNKE, then on track 058° to cross COOPR at or above 4000, then on track 058°. Expect RADAR vectors to final approach course.

LANDING FMY: From TYNEE on track 149° to BANYN, then on track 149°. Expect RADAR vectors to final approach course.

LOST COMMUNICATIONS:

RSW LANDING RUNWAY 6: After SAANN, continue to OBELL, then conduct RWY 6 approach.

RSW LANDING RUNWAY 24: After COOPR, continue to NABAC, then conduct RWY 24 approach.

TYNEE FOUR ARRIVAL (RNAV) Arrival Routes

FORT MYERS, FLORIDA

(TYNEE.TYNEE4) 12JUN25

SE-3, 16 APR 2026 to 14 MAY 2026

SE-3, 16 APR 2026 to 14 MAY 2026