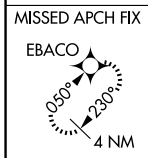
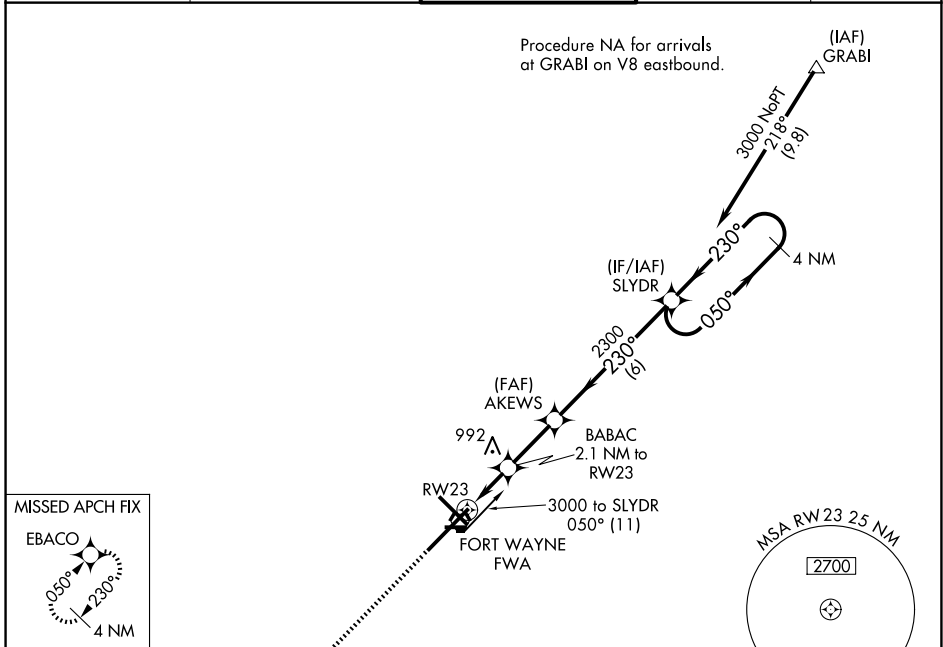


WAAS CH 69599 W23A	APP CRS 230°	Rwy Ldg 11981 TDZE 799 Apt Elev 815
--	------------------------	--

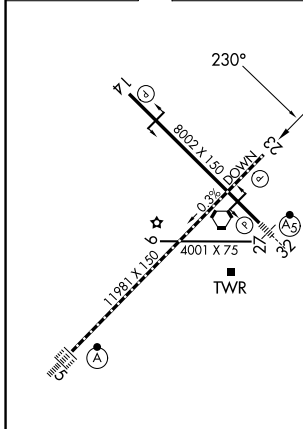
RNAV (GPS) RWY 23

FORT WAYNE INTL (FWA)

For uncompensated Baro-VNAV systems, LNAV/VNAV NA below -16°C (4°F) or above 47°C (116°F). DME/DME RNP-0.3 NA. ASR		MISSED APPROACH: Climb to 3000 direct EBACO and hold.		
ATIS 121.25 360.825	FORT WAYNE APP CON 127.2 284.6	FORT WAYNE TOWER 119.1 269.325	GND CON 121.9 348.6	CLNC DEL 124.75



ELEV 815	D	TDZE 799
-----------------	----------	-----------------



Procedure NA for arrival on FWA VORTAC airway radials 335 CW 134.

3000	EBACO	VGSi and RNAV glidepath not coincident (VGSi Angle 3.00/TCH 76).		4 NM Holding Pattern
*LNAV only.	BABAC 2.1 NM to RWY23	AKEWS 2300	SLYDR	3000
	*1.3 NM to RWY23	*1520	2300	GP 3.00° TCH 55
	1.3	0.8	2.4 NM	6 NM

CATEGORY	A	B	C	D	E
LPV DA	1053/40		254 (300-¾)		
LNAV/VNAV DA	1230-1⅜		431 (500-1⅝)		
LNAV MDA	1300/55 501 (500-1)		1300-1⅜ 501 (500-1⅝)		
CIRCLING	1300-1 485 (500-1)		1420-1¾ 605 (700-1¾)	1520-2¼ 705 (800-2¼)	1520-2½ 705 (800-2½)

TDZ/CL Rwy 5
REIL Rwy 14 and 23
HIRL Rwy 5-23 and 14-32

EC-2, 16 APR 2026 to 14 MAY 2026

EC-2, 16 APR 2026 to 14 MAY 2026