
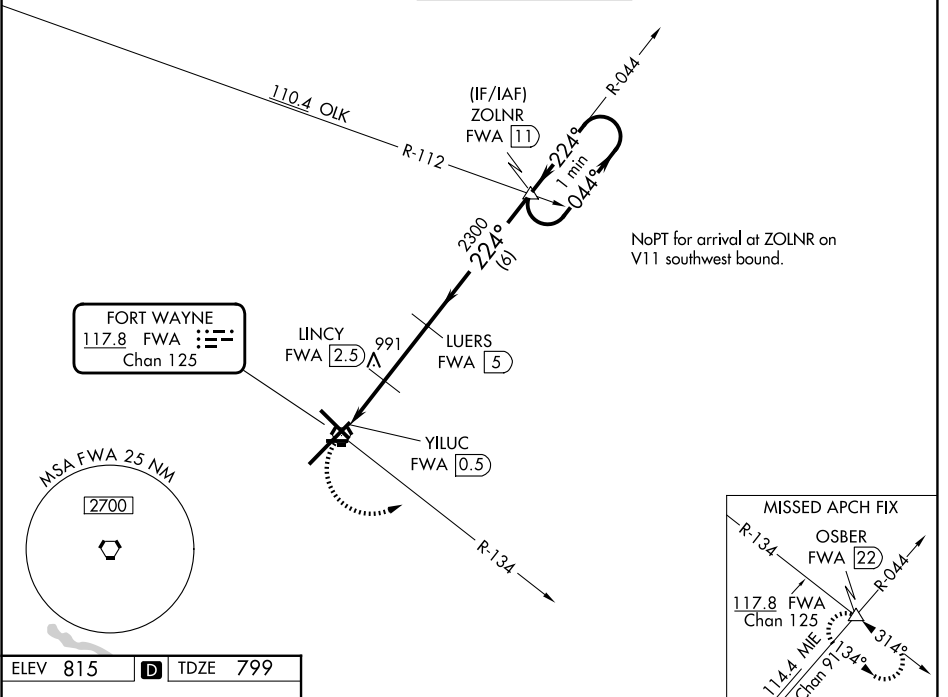


VORTAC FWA 117.8 Chan 125	APP CRS 224°	Rwy Ldg TDZE 11981 799 Apt Elev 815
--	------------------------	--

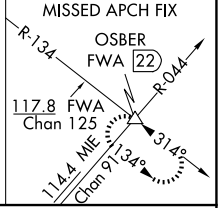
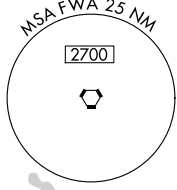
VOR or TACAN RWY 23

FORT WAYNE INTL (FWA)

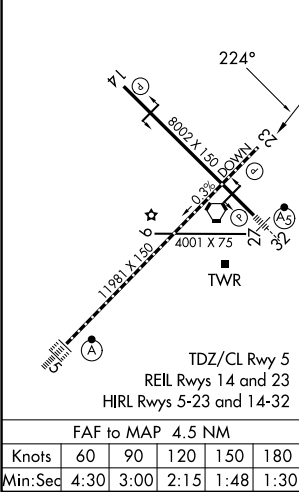
 ASR		MISSED APPROACH: Climbing left turn to 3000 on FWA VORTAC R-134 to OSBER INT/FWA 22 DME and hold.		
ATIS 121.25 360.825	FORT WAYNE APP CON 127.2 284.6	FORT WAYNE TOWER 119.1 269.325	GND CON 121.9 348.6	CLNC DEL 124.75



FORT WAYNE
117.8 FWA
Chan 125



ELEV 815	D	TDZE 799
----------	----------	----------



	OSBER FWA R-134	LYNCR FWA 2.5	LUERS FWA 5	ZOLNR FWA 11	One Minute Holding Pattern
					044° → 3000
					← 224°
					3.04° TCH 55
					1.3 0.7 NM 2.5 6 NM
					VGSI and descent angles not coincident (VGSI Angle 3.00/TCH 76).
CATEGORY	A	B	C	D	E
S-23	1400/55	601 (600-1)	1400-1¾	601 (600-1¾)	
CIRCLING	1400-1	585 (600-1)	1420-1¾ 605 (700-1¾)	1520-2¼ 705 (800-2¼)	1520-2½ 705 (800-2½)
LYNCR FIX MINIMUMS					
S-23	1300/55	501 (500-1)	1300-1¾	501 (500-1¾)	
CIRCLING	1300-1	485 (500-1)	1420-1¾ 605 (700-1¾)	1520-2¼ 705 (800-2¼)	1520-2½ 705 (800-2½)

EC-2, 16 APR 2026 to 14 MAY 2026

EC-2, 16 APR 2026 to 14 MAY 2026