

APP CRS	Rwy Ldg	<b>2925</b>
<b>056°</b>	TDZE	<b>834</b>
	Apt Elev	<b>836</b>

# RNAV (GPS) RWY 5

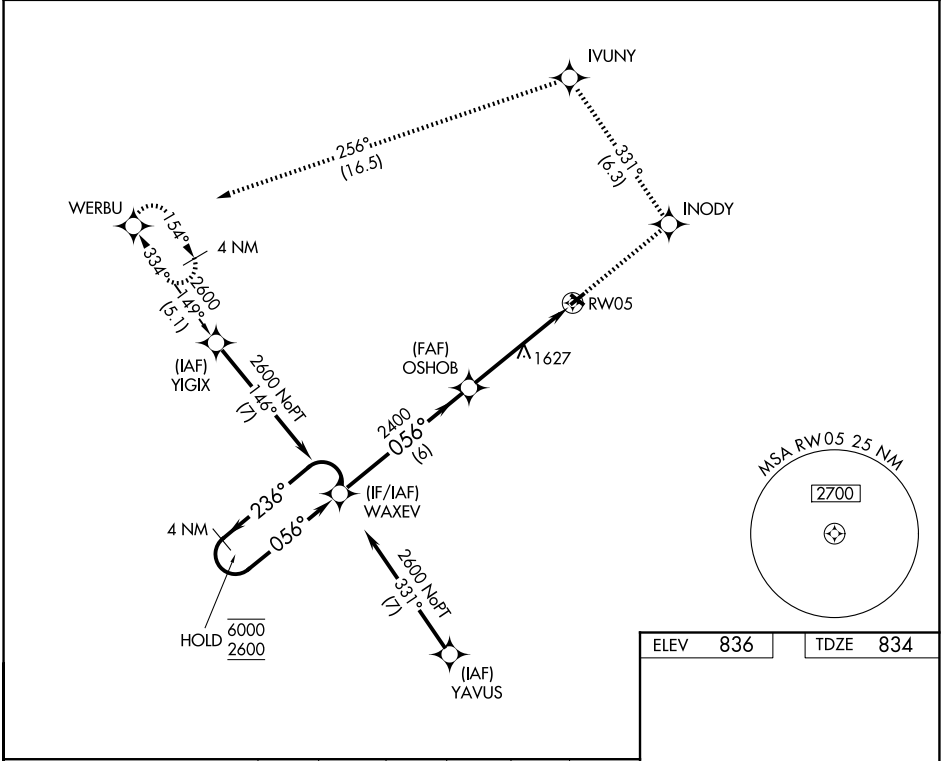
SMITH FLD (SMD)

RNP APCH - GPS.

▼ Rwy 5 helicopter visibility reduction below ¾ NA. Circling to Rwy 13/31  
 ▲ NA NA at night. When local altimeter setting not received, use FWA altimeter  
 ❄️ -21°C setting and increase all MDAs 40 feet. VDP NA with FWA altimeter setting.

MISSED APPROACH: Climb to 2700 direct INODY and on track 331° to IVUNY and on track 256° to WERBU and hold.

AWOS-3 <b>124.55</b>	FORT WAYNE APP CON <b>127.2 284.6</b>	UNICOM <b>122.8 (CTAF) 0</b>
-------------------------	--	---------------------------------

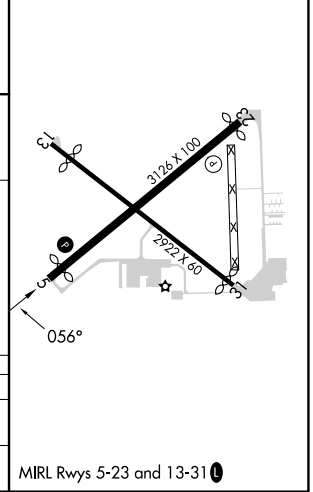


EC-2, 16 APR 2026 to 14 MAY 2026

EC-2, 16 APR 2026 to 14 MAY 2026

ELEV	<b>836</b>	TDZE	<b>834</b>
------	------------	------	------------

4 NM Holding Pattern	2700	INODY	tr 331°	IVUNY	tr 256°	WERBU
	6000	← 236°	→ 056°	056°	OSHOB	2.4 NM to RW05
Visual Segment - Obstacles.						
WAXEV		6 NM				
VGS1 and descent angles not coincident (VGS1 Angle 4.00/TCH 43).		2400				
CATEGORY		A	B	C	D	
LNAV MDA		1880-1¼ 1046 (1100-1¼)	1880-1½ 1046 (1100-1½)	1880-3 1046 (1100-3)	NA	
CIRCLING		1880-1¼ 1044 (1100-1¼)	1880-1½ 1044 (1100-1½)	1940-3 1104 (1200-3)	NA	



MIRL Rwy 5-23 and 13-31 0