

KUSSO TWO DEPARTURE (RNAV)  
(KUSSO2.KUSSO) 22JAN26

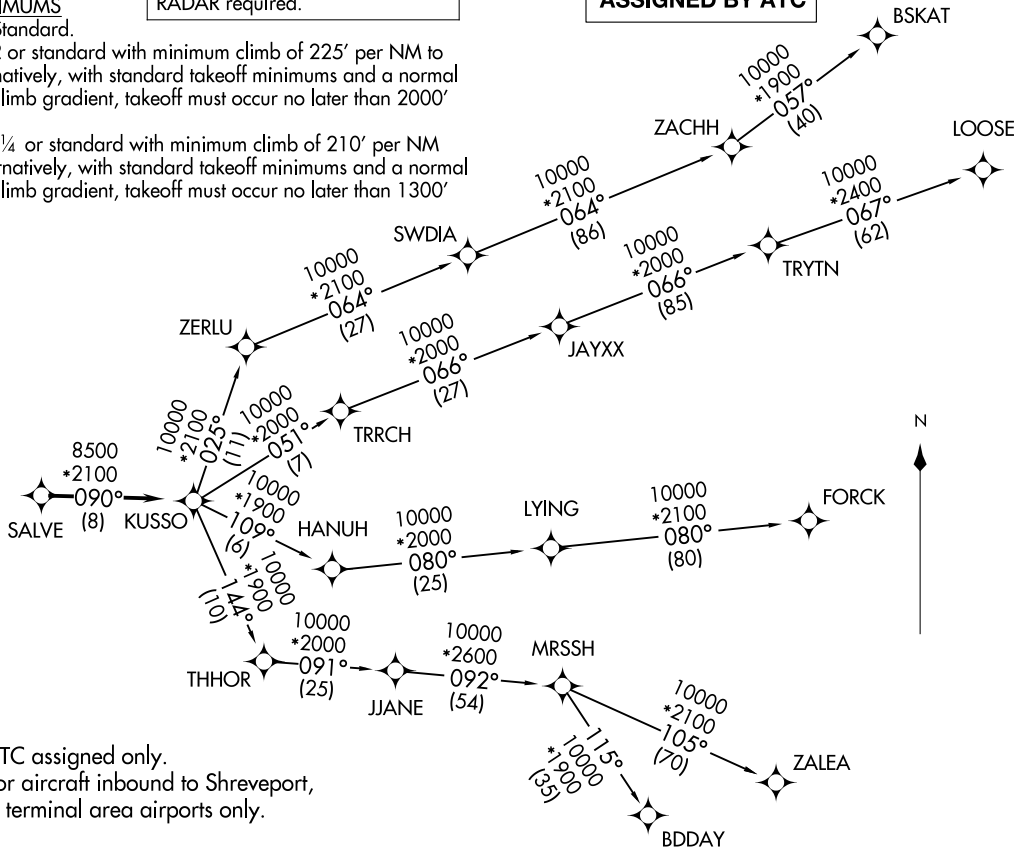
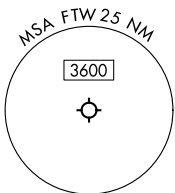
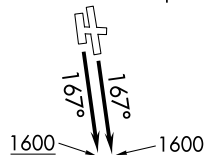
LONE STAR DEP CON  
118.1 306.95 (N)  
135.975 379.9 (S)  
ATIS  
120.7  
CLNC DEL  
124.65  
GND CON  
121.9  
MEACHAM TOWER  
118.3 257.8

**TAKEOFF MINIMUMS**

Rwys 16, 17: Standard.  
Rwy 34: 300-2 or standard with minimum climb of 225' per NM to 1100, or alternatively, with standard takeoff minimums and a normal 200' per NM climb gradient, takeoff must occur no later than 2000' prior to DER.  
Rwy 35: 300-1¼ or standard with minimum climb of 210' per NM to 900, or alternatively, with standard takeoff minimums and a normal 200' per NM climb gradient, takeoff must occur no later than 1300' prior to DER.

RNAV 1 - DME/DME/IRU or GPS.  
RADAR required.

**TOP ALTITUDE:  
ASSIGNED BY ATC**



NOTE: BDDAY Transition: ATC assigned only.  
NOTE: MRSSH Transition: For aircraft inbound to Shreveport, Jackson and Monroe terminal area airports.

(CONTINUED ON FOLLOWING PAGE)

NOTE: Chart not to scale.

(KUSSO2.KUSSO) 26072  
KUSSO TWO DEPARTURE (RNAV)

AL-159 (FAA)

FORT WORTH MEACHAM INTL (FTW)  
FORT WORTH, TEXAS

FORT WORTH, TEXAS  
FORT WORTH MEACHAM INTL (FTW)

# KUSSO TWO DEPARTURE (RNAV)



## DEPARTURE ROUTE DESCRIPTION

TAKEOFF RUNWAYS 16, 17: Climb on heading 167° to 1600 before proceeding on course.

When entering controlled airspace, fly heading assigned by ATC, expect vector to SALVE, then on track 090° to KUSSO, then on assigned transition. Maintain ATC assigned altitude, expect filed altitude 10 minutes after departure.

- BDDAY TRANSITION (KUSSO2.BDDAY)
- BSKAT TRANSITION (KUSSO2.BSKAT)
- FORCK TRANSITION (KUSSO2.FORCK)
- LOOSE TRANSITION (KUSSO2.LOOSE)
- MRSSH TRANSITION (KUSSO2.MRSSH)
- ZALEA TRANSITION (KUSSO2.ZALEA)

SC-2, 16 APR 2026 to 14 MAY 2026

SC-2, 16 APR 2026 to 14 MAY 2026