

RADAR and DME required.

**TOP ALTITUDE:  
ASSIGNED BY ATC**

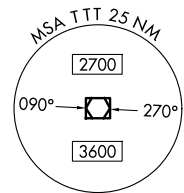
LONE STAR DEP CON  
 118.1 306.95 (NORTH)  
 135.975 379.9 (SOUTH)  
 ATIS  
 120.7  
 CLNC DEL  
 124.65  
 GND CON  
 121.9  
 MEACHAM TOWER  
 118.3 257.8

(WORTH1.TTT) 24305  
**WORTH ONE DEPARTURE**

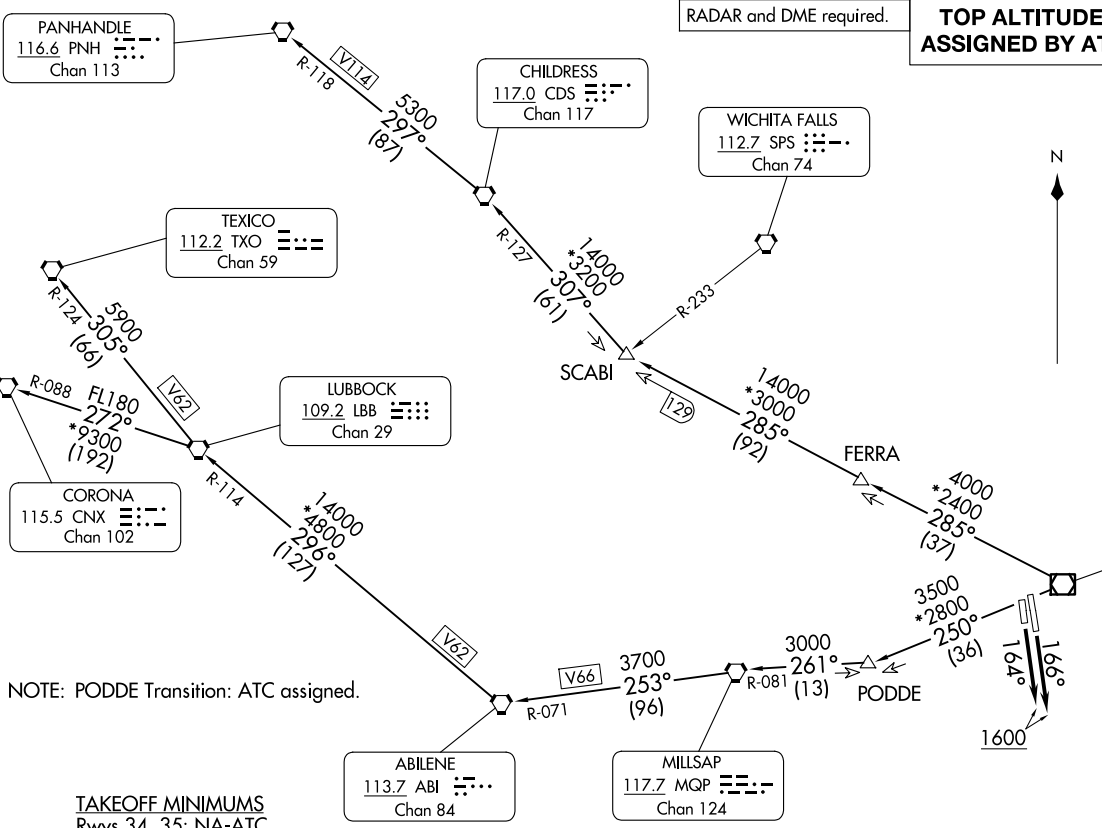
AL-159 (FAA)

**FORT WORTH MEACHAM INTL (FTTW)**  
FORT WORTH, TEXAS

N



NOTE: Chart not to scale.



NOTE: PODDE Transition: ATC assigned.

TAKEOFF MINIMUMS  
 Rwys 34, 35: NA-ATC.  
 Rwys 16, 17: Standard.

(CONTINUED ON FOLLOWING PAGE)

**WORTH ONE DEPARTURE**  
(WORTH1.TTT) 251AN24

**FORT WORTH MEACHAM INTL (FTTW)**  
FORT WORTH, TEXAS

# WORTH ONE DEPARTURE



## DEPARTURE ROUTE DESCRIPTION

TAKEOFF RUNWAY 16: Climb on heading 166° to 1600 before proceeding on course.

TAKEOFF RUNWAY 17: Climb on heading 164° to 1600 before proceeding on course.

When entering controlled airspace, fly assigned heading for RADAR vectors to appropriate route. Maintain ATC assigned altitude.

ABILENE TRANSITION (WORTH1.ABI): From over TTT VOR/DME on TTT R-250 to PODDE, then on MQP R-081 to MQP VORTAC, then on MQP R-253 and ABI R-071 to ABI VORTAC.

CHILDRESS TRANSITION (WORTH1.CDS): From over TTT VOR/DME on TTT R-285 to SCABI, then on CDS R-127 to CDS VORTAC.

CORONA TRANSITION (WORTH1.CNX): From over TTT VOR/DME on TTT R-250 to PODDE, then on MQP R-081 to MQP VORTAC, then on MQP R-253 and ABI R-071 to ABI VORTAC, then on ABI R-296 and LBB R-114 to LBB VORTAC, then on LBB R-272 and CNX R-088 to CNX VORTAC.

LUBBOCK TRANSITION (WORTH1.LBB): From over TTT VOR/DME on TTT R-250 to PODDE, then on MQP R-081 to MQP VORTAC, then on MQP R-253 and ABI R-071 to ABI VORTAC, then on ABI R-296 and LBB R-114 to LBB VORTAC.

PANHANDLE TRANSITION (WORTH1.PNH): From over TTT VOR/DME on TTT R-285 to SCABI, then on CDS R-127 to CDS VORTAC, then on CDS R-297 and PNH R-118 to PNH VORTAC.

PODDE TRANSITION (WORTH1.PODDE): From over TTT VOR/DME on TTT R-250 to PODDE.

TEXICO TRANSITION (WORTH1.TXO): From over TTT VOR/DME on TTT R-250 to PODDE, then on MQP R-081 to MQP VORTAC, then on MQP R-253 and ABI R-071 to ABI VORTAC, then on ABI R-296 and LBB R-114 to LBB VORTAC, then on LBB R-305 and TXO R-124 to TXO VORTAC.

SC-2, 16 APR 2026 to 14 MAY 2026

SC-2, 16 APR 2026 to 14 MAY 2026