

HI-ILS Y or LOC Y RWY 18

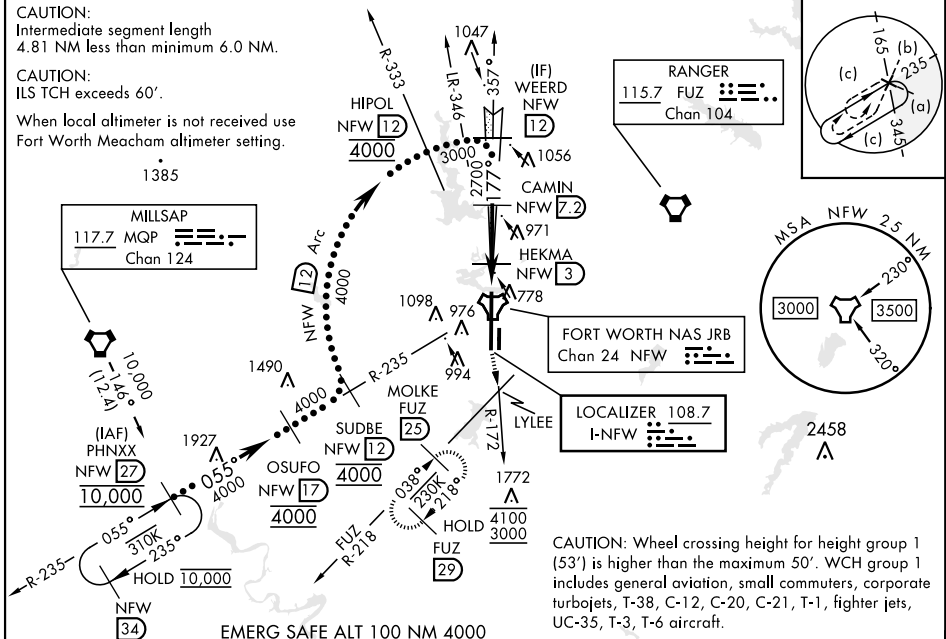
LOC I-NFW 108.7	APCH CRS 177°	Rwy Ildg 11,999 TDZE 636 Arpt Elev 650	[USN]	FORT WORTH NAS JRB (CARSWELL FLD) (KNFW)
---------------------------	-------------------------	-------------------------------------------------------------------	-------	------------------------------------------

FUZ VORTAC or RADAR required.

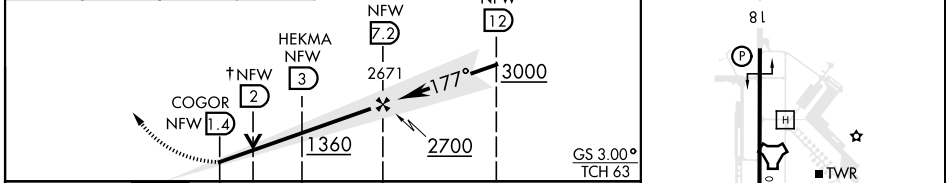
* Circling not authorized E of Rwy 18-36.

MISSED APPROACH: Climb to 3000 direct LYLEE to intercept FUZ VORTAC R-218 to MOLKE and hold.

ATIS★ 351.675	LONE STAR APP CON 125.8 257.95	NAVY FORT WORTH TOWER★ 120.95 269.325	GND CON 121.675 279.575	CLNC DEL 126.4 254.325	ASR/ PAR
-------------------------	------------------------------------------	-------------------------------------------------	-----------------------------------	----------------------------------	-------------



3000	LYLEE	FUZ R-218	MOLKE FUZ 25	↑ VDP NA when using FTW altimeter setting	ELEV 650	TDZE 636
------	-------	-----------	--------------	-------------------------------------------	----------	----------



CATEGORY	C	D	E
S-ILS 18	836-¾	200	(200-¾)
S-LOC 18	1040-1⅞	404	(400-1⅞)
C CIRCLING*	1320-1¾ 670 (700-1¾)	1340-2¼ 690 (700-2¼)	1440-2¾ 790 (800-2¾)
FORT WORTH MEACHAM ALTIMETER			
S-ILS 18	856-¾	220	(300-¾)
S-LOC 18	1060-1¼	424	(500-1¼)
C CIRCLING*	1340-2 690 (700-2)	1360-2¼ 710 (800-2¼)	1460-2¾ 810 (900-2¾)

FAF to MAP 5.8 NM					
Knots	120	140	160	180	200
Min:Sec	2:54	2:29	2:11	1:56	1:44

HI-ILS Y or LOC Y RWY 18

SC-2, 16 APR 2026 to 14 MAY 2026

SC-2, 16 APR 2026 to 14 MAY 2026