

HI-ILS Y or LOC Y RWY 36

FORT WORTH NAS JRB (CARSWELL FLD) (KNFW)

LOC I-FWH 109.3	APCH CRS 357°	Rwy ldg 11,999 TDZE 650 Arpt Elev 650
---------------------------	-------------------------	--

[USN]

TACAN required

▼ * When ALS inop, increase vis to ¾ mile.
 ** When ALS inop, increase vis to 1½ miles.
 *** When ALS inop, increase vis to 1¾ miles.



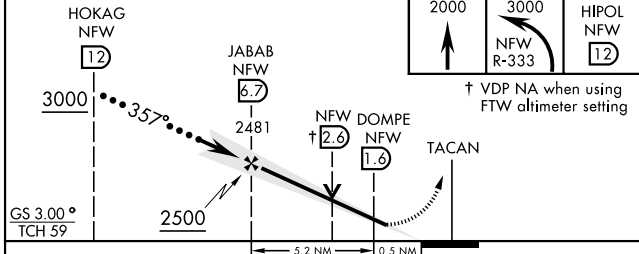
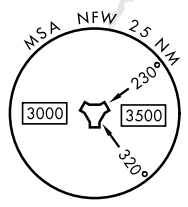
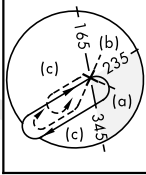
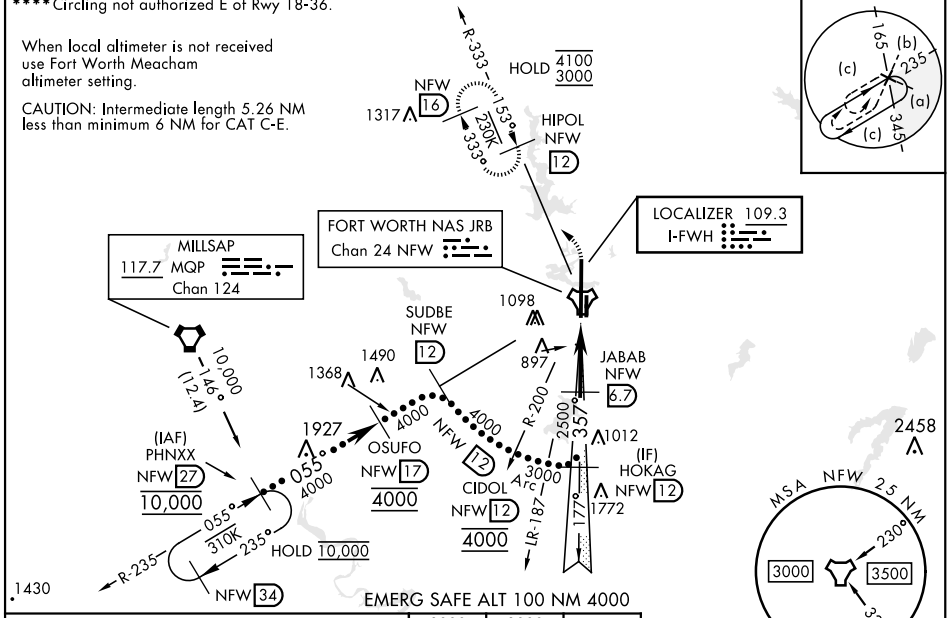
MISSED APPROACH: Climb to 2000, then climbing left turn to 3000 to intercept NFW TACAN R-333 to HIPOL and hold.

ATIS* 351.675	LONE STAR APP CON 125.8 257.95	NAVY FORT WORTH TOWER* 120.95 269.325	GND CON 121.675 279.575	CLNC DEL 126.4 254.325	ASR/PAR
-------------------------	--	---	-----------------------------------	----------------------------------	---------

**** Circling not authorized E of Rwy 18-36.

When local altimeter is not received use Fort Worth Meacham altimeter setting.

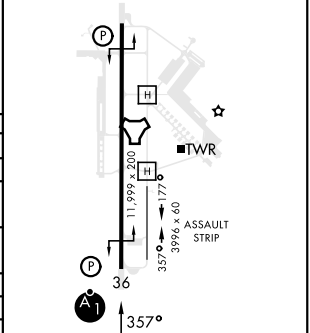
CAUTION: Intermediate length 5.26 NM less than minimum 6 NM for CAT C-E.



CATEGORY	C	D	E
S-ILS 36*	850-½	200	(200-½)
S-LOC 36**	1180-1	530	(600-1)
**** CIRCLING	1320-1¾ 670 (700-1¾)	1340-2¼ 690 (700-2¼)	1440-2¾ 790 (800-2¾)
FORT WORTH MEACHAM ALTIMETER			
S-ILS 36*	870-½	220	(300-½)
S-LOC 36***	1200-1½	550	(600-1½)
**** CIRCLING	1340-2 690 (700-2)	1360-2¼ 710 (800-2¼)	1460-2¾ 810 (900-2¾)

ELEV	650	TDZE	650
------	-----	------	-----

REIL Rwy 18 (L)
HIRL Rwy 18-36 (L)



FAF to MAP 5.2 NM					
Knots	120	140	160	180	200
Min:Sec	2:33	2:11	1:55	1:42	1:32

HI-ILS Y or LOC Y RWY 36

SC-2, 16 APR 2026 to 14 MAY 2026

SC-2, 16 APR 2026 to 14 MAY 2026