

FORT WORTH, TEXAS

# ILS Z or LOC Z RWY 18

LOC I-NFW <b>108.7</b>	APCH CRS <b>177°</b>	Rwy Idg <b>11,999</b> TDZE <b>636</b> Arpt Elev <b>650</b>
---------------------------	-------------------------	--

[USN] FORT WORTH NAS JRB (CARSWELL FLD) (KNFW)

FUZ VORTAC or RADAR required

MISSED APPROACH: Climb to 3000 direct LYLEE to intercept FUZ VORTAC R-218 to MOLKE and hold.

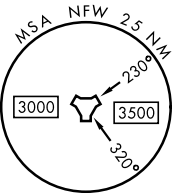
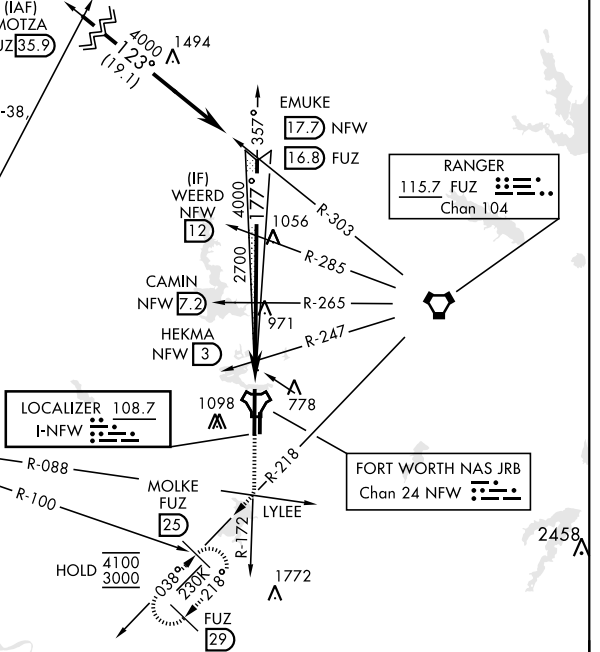
ATIS* <b>351.675</b>	LONE STAR APP CON <b>125.8 257.95</b>	NAVY FORT WORTH TOWER* <b>120.950 269.325</b>	GND CON <b>121.675 279.575</b>	CLNC DEL <b>126.4 254.325</b>	ASR/PAR
-------------------------	--	--	-----------------------------------	----------------------------------	---------

CAUTION:  
ILS TCH exceeds 60'.

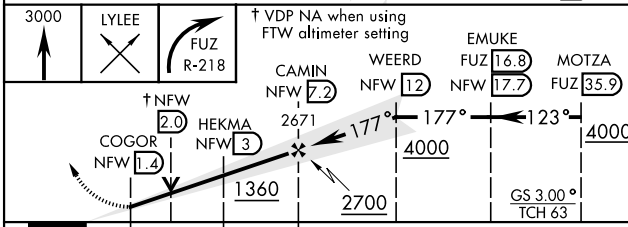
CAUTION: Wheel crossing height for height group 1 (53') is higher than the maximum 50'. Wheel crossing height group 1 includes general aviation, small commuters, corporate turboprops, T-38, C-12, C-20, C-21, T-1, fighter jets, UC-35, T-3, T-6 aircraft.  
1470

When local altimeter is not received, use Fort Worth Meacham altimeter setting.

MILLSAP  
117.7 MQP  
Chan 124



EMERG SAFE ALT 100 NM 4000



ELEV 650	TDZE 636
HIRL Rwy 18-36	
REIL Rwy 18	
FAF to MAP 5.8 NM	
Knots	60 90 120 150 180
Min:Sec	5:48 3:52 2:54 2:19 1:56

CATEGORY	A	B	C	D	E
S-ILS 18	836-3/4		200	(200-3/4)	
S-LOC 18	1040-1	404 (400-1)	1040-1 1/8	404	(400-1 1/8)
<b>C</b> CIRCLING*	1220-1 570 (600-1)	1320-1 670 (700-1)	1320-1 3/4 670 (700-1 3/4)	1340-2 1/4 690 (700-2 1/4)	1440-2 3/4 790 (800-2 3/4)
FORT WORTH MEACHAM ALTIMETER					
S-ILS 18	856-3/4		220	(300-3/4)	
S-LOC 18	1060-1	424 (500-1)	1060-1 1/4	424	(500-1 1/4)
<b>C</b> CIRCLING*	1240-1 590 (600-1)	1340-1 690 (700-1)	1340-2 690 (700-2)	1360-2 1/4 710 (800-2 1/4)	1460-2 3/4 810 (900-2 3/4)

FORT WORTH, TEXAS 32°46'N-97°26'W FORT WORTH NAS JRB (CARSWELL FLD) (KNFW)

Orig 18MAY23

# ILS Z or LOC Z RWY 18

SC-2, 16 APR 2026 to 14 MAY 2026

SC-2, 16 APR 2026 to 14 MAY 2026