

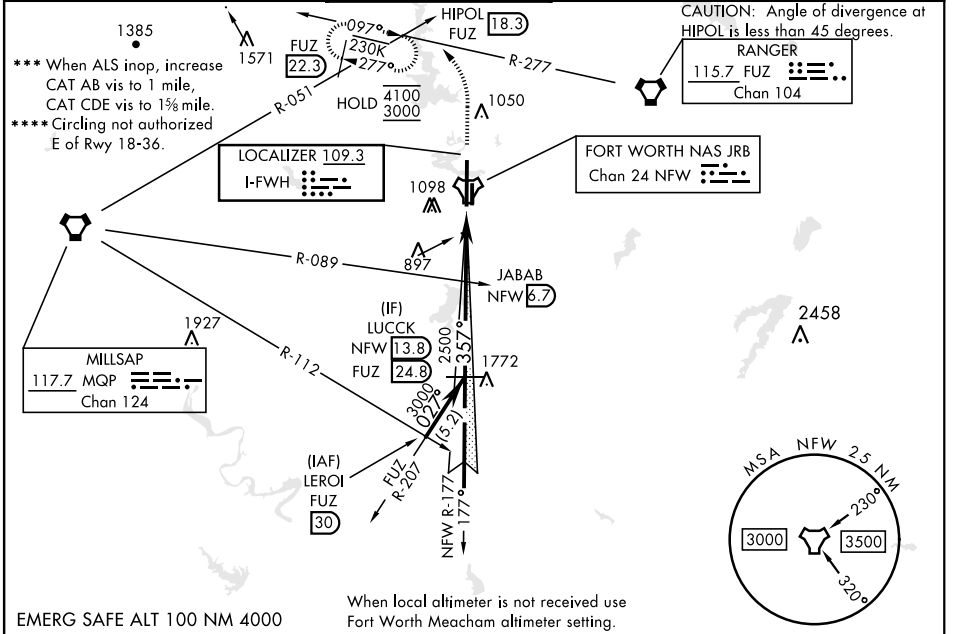
FORT WORTH, TEXAS

I LS Z or LOC Z RWY 36

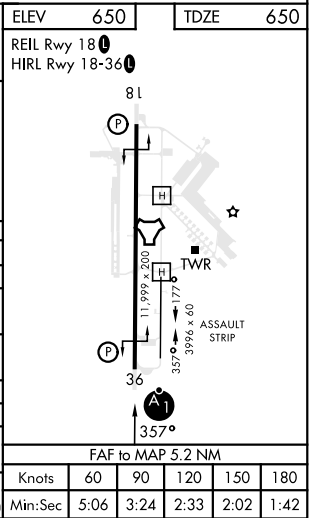
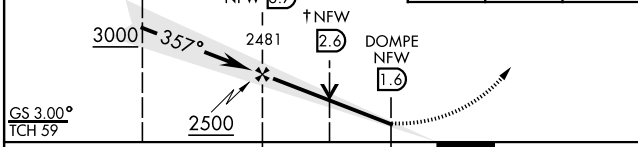
LOC I-FWH 109.3	APCH CRS 357°	Rwy Ldg 11,999 TDZE 650 Arpt Elev 650	[USN]	FORT WORTH NAS JRB (CARSWELL FLD) (KNFW)
---------------------------	-------------------------	--	-------	--

FUZ VORTAC or RADAR required. * When ALS inop, increase vis to ¾ mile. ** When ALS inop, increase CAT AB vis to 1 mile, CAT CDE vis to 1½ mile.	ALSF-1 	MISSED APPROACH: Climb to 2000, then climbing left turn to 3000 heading 330° and FUZ VORTAC R-277 to HIPOL and hold. FUZ VORTAC required for missed approach.
---	------------	---

ATIS* 351.675	LONE STAR APP CON 125.8 257.95	NAVY FORT WORTH TOWER* 120.950 269.325	GND CON 121.675 279.575	CLNC DEL 126.4 254.325	ASR/PAR
-------------------------	--	--	-----------------------------------	----------------------------------	---------



EMERG SAFE ALT 100 NM 4000	2000 3000 hdg 330°	ELEV 650 TDZE 650
----------------------------	--------------------------	----------------------



CATEGORY	A	B	C	D	E
S-ILS 36*	850-½		200	(200-½)	
S-LOC 36**	1180-½	530 (600-½)	1180-1	530 (600-1)	
CIRCLING	1220-1 570 (600-1)	1320-1 670 (700-1)	1320-1¾ 670 (700-1¾)	1340-2¼ 690 (700-2¼)	1440-2¾ 790 (800-2¾)
FORT WORTH MEACHAM ALTIMETER					
S-ILS 36*	870-½		220	(300-½)	
S-LOC 36***	1200-½	550 (600-½)	1200-1½	550 (600-1½)	
CIRCLING	1240-1 590 (600-1)	1340-1 690 (700-1)	1340-2 690 (700-2)	1360-2¼ 710 (800-2¼)	1460-2¾ 810 (900-2¾)

FAF to MAP 5.2 NM					
Knots	60	90	120	150	180
Min:Sec	5:06	3:24	2:33	2:02	1:42

FORT WORTH, TEXAS 32°46'N-97°26'W FORT WORTH NAS JRB (CARSWELL FLD) (KNFW)

Orig 18MAY23

I LS Z or LOC Z RWY 36

SC-2, 16 APR 2026 to 14 MAY 2026

SC-2, 16 APR 2026 to 14 MAY 2026