

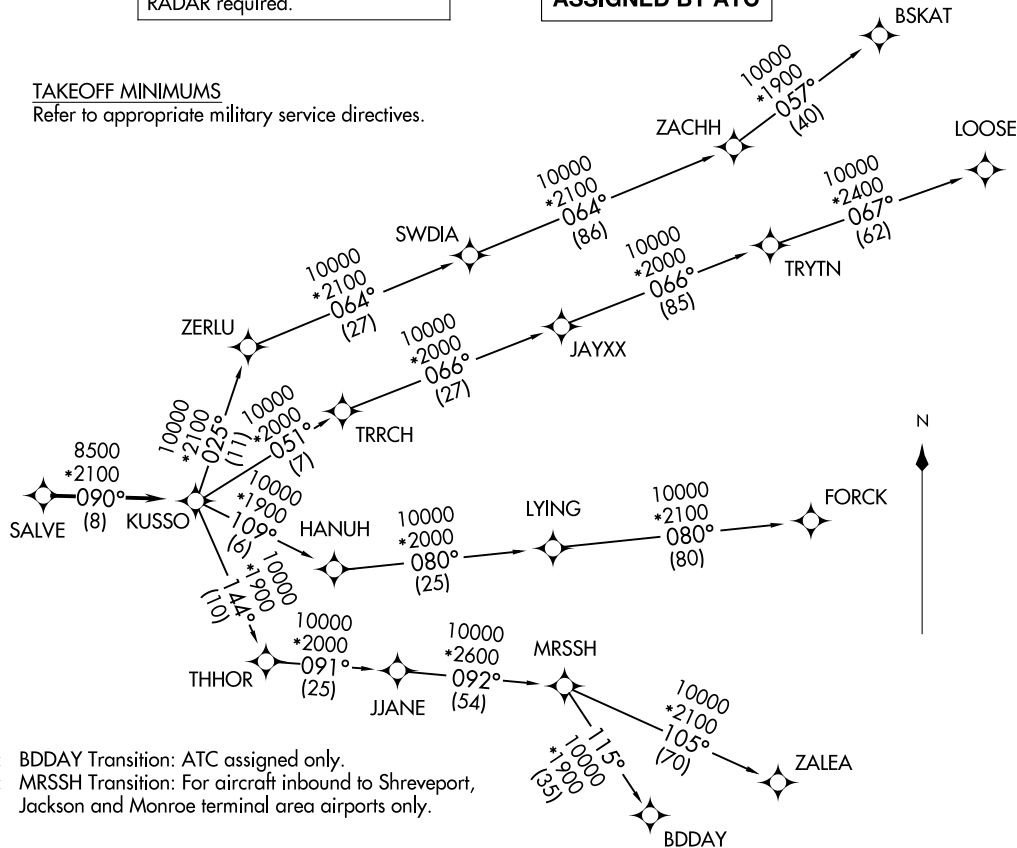
KUSSO TWO DEPARTURE (RNAV)
(KUSSO2.KUSSO) 22JAN26

LONE STAR DEP CON
125.8 257.95
ATIS ★
351.675
CLNC DEL
126.4 254.325
GND CON
121.675 279.575
NAVY FORT WORTH TOWER ★
120.95 269.325

RNAV 1 - DME/DME/IRU or GPS.
RADAR required.

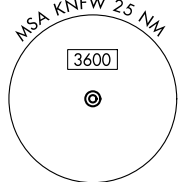
TOP ALTITUDE:
ASSIGNED BY ATC

TAKEOFF MINIMUMS
Refer to appropriate military service directives.



NOTE: BDDAY Transition: ATC assigned only.
NOTE: MRSSH Transition: For aircraft inbound to Shreveport, Jackson and Monroe terminal area airports only.

(CONTINUED ON FOLLOWING PAGE)



NOTE: Chart not to scale.

(KUSSO2.KUSSO) 26022
KUSSO TWO DEPARTURE (RNAV)

AL-160 (FAA) FORT WORTH NAS JRB (CARSWELL FLD) (KNFVW)
FORT WORTH, TEXAS

FORT WORTH, TEXAS
FORT WORTH NAS JRB (CARSWELL FLD) (KNFVW)

KUSSO TWO DEPARTURE (RNAV)



DEPARTURE ROUTE DESCRIPTION

When entering controlled airspace, fly heading assigned by ATC, expect vector to SALVE, then on track 090° to KUSSO, then on assigned transition. Maintain ATC assigned altitude, expect filed altitude 10 minutes after departure.

- BDDAY TRANSITION (KUSSO2.BDDAY)
- BSKAT TRANSITION (KUSSO2.BSKAT)
- FORCK TRANSITION (KUSSO2.FORCK)
- LOOSE TRANSITION (KUSSO2.LOOSE)
- MRSSH TRANSITION (KUSSO2.MRSSH)
- ZALEA TRANSITION (KUSSO2.ZALEA)

SC-2, 16 APR 2026 to 14 MAY 2026

SC-2, 16 APR 2026 to 14 MAY 2026