

# NANDR THREE DEPARTURE (RNAV)

AL-160 (FAA)

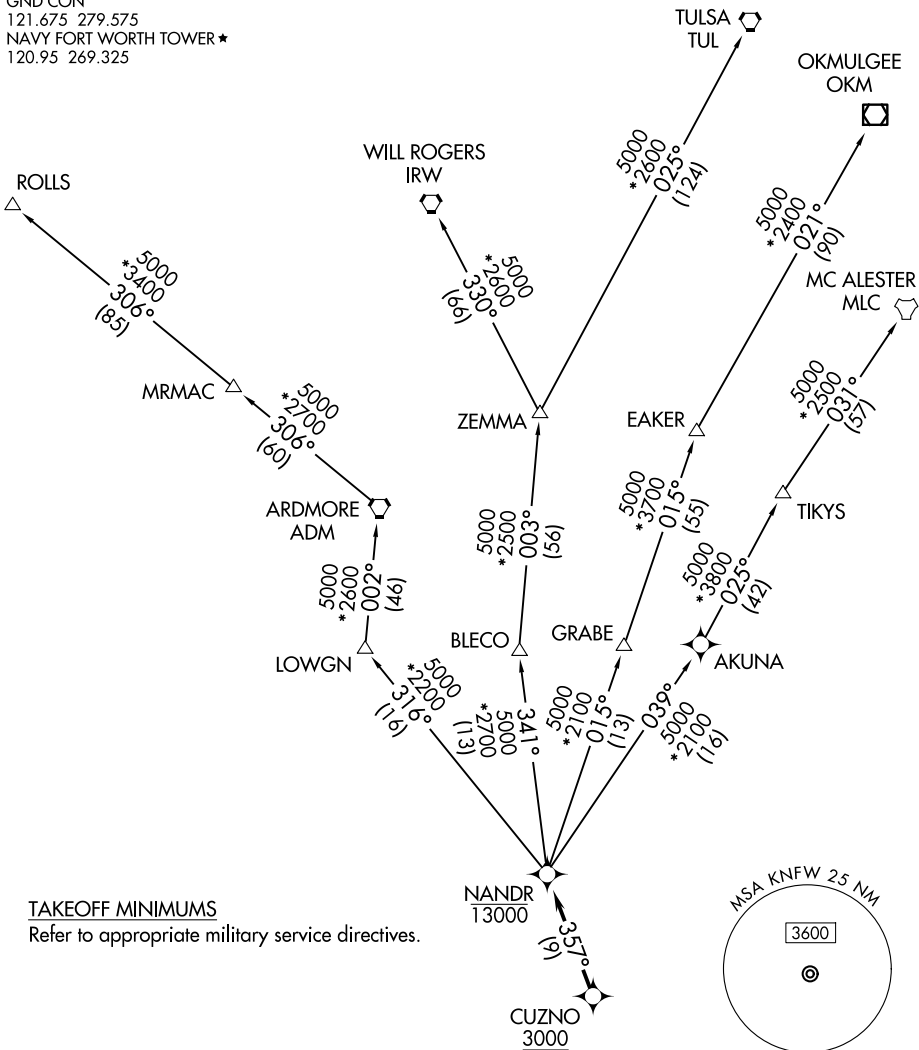
FORT WORTH, TEXAS

LONE STAR DEP CON  
 125.8 257.95  
 ATIS\*  
 351.675  
 GND CON  
 121.675 279.575  
 NAVY FORT WORTH TOWER\*  
 120.95 269.325

RNAV 1 - DME/DME/IRU or GPS.

RADAR required.

**TOP ALTITUDE:  
ASSIGNED BY ATC**



SC-2, 16 APR 2026 to 14 MAY 2026

SC-2, 16 APR 2026 to 14 MAY 2026

NOTE: EAKER Transition: For TUL terminal arrivals only.  
 NOTE: TULSA Transition: For all aircraft overflying TUL VORTAC.  
 NOTE: Aircraft arriving to the Oklahoma City terminal area, file and expect the ZEMMA enroute transition.

NOTE: Chart note to scale.

(CONTINUED ON FOLLOWING PAGE)

# NANDR THREE DEPARTURE (RNAV)

FORT WORTH, TEXAS

(NANDR3.NANDR) 17 APR 25

FORT WORTH NAS JRB (CARSWELL FLD)(KNFW)



DEPARTURE ROUTE DESCRIPTION

TAKEOFF RUNWAY 18: Climb on heading 177° or as assigned by ATC, thence. . .

TAKEOFF RUNWAY 36: Climb on heading 357° or as assigned by ATC, thence. . .

. . .expect RADAR vectors to cross CUZNO at or above 3000, then on track 357° to cross NANDR at or below 13000, then on assigned transition.

EAKER TRANSITION (NANDR3.EAKER)

MC ALESTER TRANSITION (NANDR3.MLC)

OKMULGEE TRANSITION (NANDR3.OKM)

ROLLS TRANSITION (NANDR3.ROLLS)

TULSA TRANSITION (NANDR3.TUL)

WILL ROGERS TRANSITION (NANDR3.IRW)

ZEMMA TRANSITION (NANDR3.ZEMMA)

SC-2, 16 APR 2026 to 14 MAY 2026

SC-2, 16 APR 2026 to 14 MAY 2026