

RNAV (GPS) RWY 30

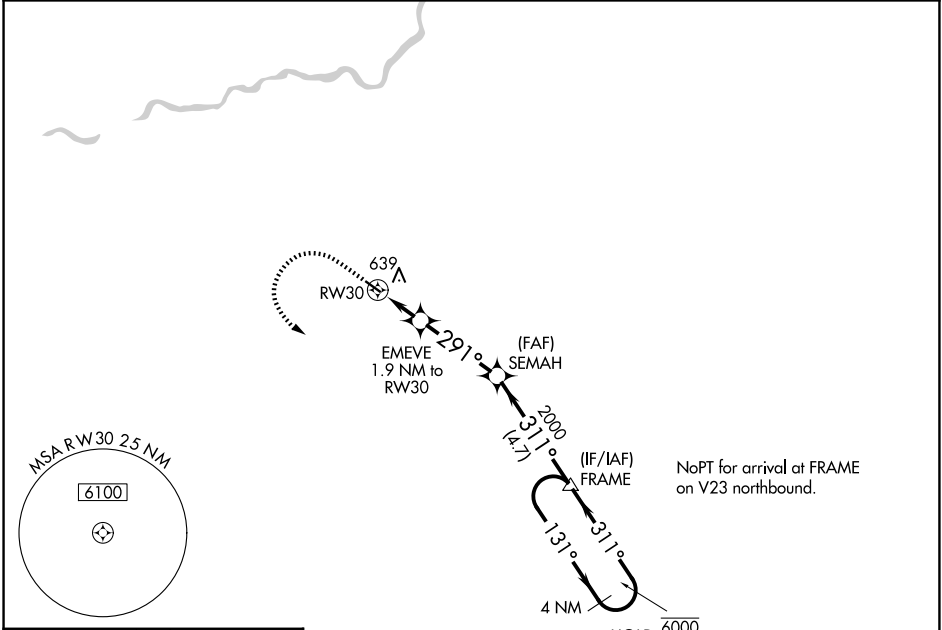
FRESNO CHANDLER EXEC (F'CH)

APP CRS 291°	Rwy Ldg TDZE Apt Elev	3089 280 280
------------------------	-----------------------------	---

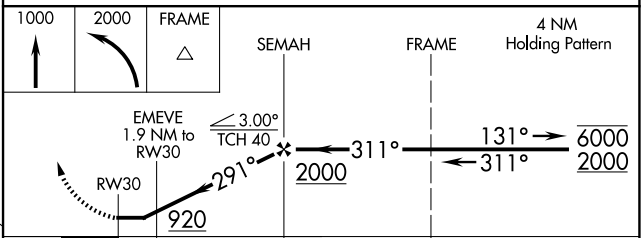
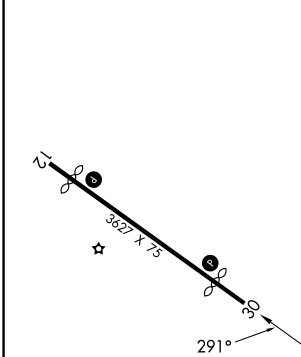
RNP APCH. MISSED APPROACH: Climb to 1000 then climbing left turn to 2000 direct FRAME and hold.

▼ Straight-in Rwy 30 NA at night, Circling Rwy 30 NA at night.
Rwy 30 helicopter visibility reduction below 1 SM NA.

AWOS-3 135.225	FRESNO APP CON 119.0 323.25	CLNC DEL 119.0	UNICOM 123.0 (CTAF) 0
--------------------------	---------------------------------------	--------------------------	---------------------------------



ELEV 280	TDZE 280
----------	----------



CATEGORY	A	B	C	D
LNAV MDA	800-1	520 (600-1)	800-1 $\frac{3}{8}$ 520 (600-1 $\frac{3}{8}$)	NA
CIRCLING	960-1	680 (700-1)	960-2 680 (700-2)	NA

SW-2, 16 APR 2026 to 14 MAY 2026

SW-2, 16 APR 2026 to 14 MAY 2026