

FRESNO, CALIFORNIA

HI-ILS Z or LOC Z RWY 29R

LOC/DME I-FAT 111.3 Chan 50	APCH CRS 292°	Rwy Idg 29R 9227 TDZE 29R 333 Arpt Elev 336	29L 8008 29L 331
---	-------------------------	--	-----------------------------------

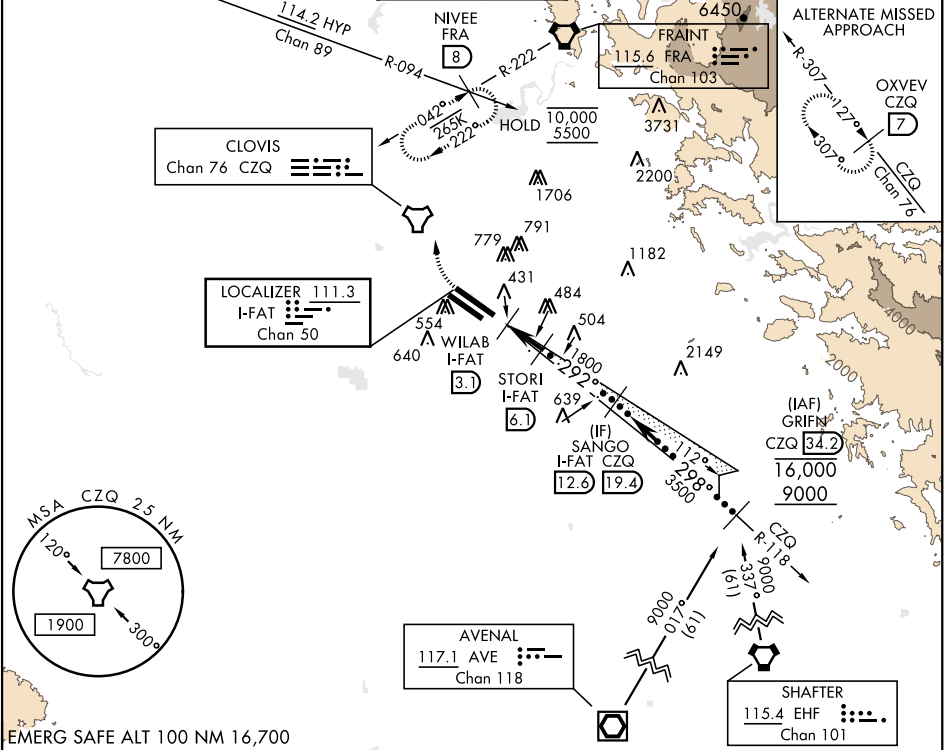
AL-162 [USAF] FRESNO YOSEMITE INTL (KFAT)

DME required.

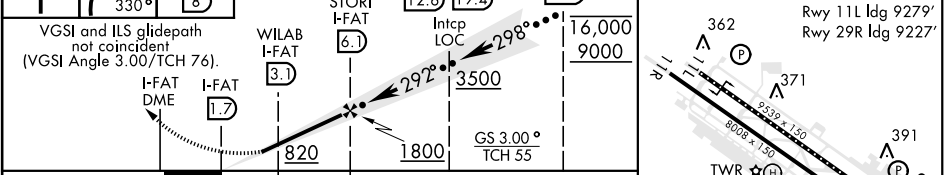
ALSF-2

MISSED APPROACH: Climb to 800, then climbing right turn to 5500 on heading 330° and FRA VORTAC R-222 to NIVEE int (FRA 8 DME) and hold, continue climb-in-hold to 5500.

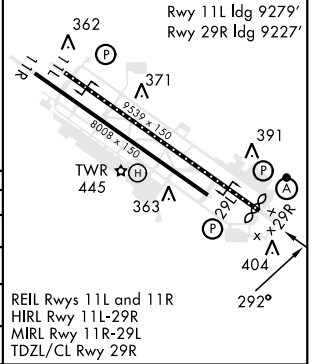
ATIS 121.35 273.6	APP CON 132.35 323.25	TOWER 118.2 251.1	GND CON 121.7 348.6	CLNC DEL 124.35 348.6
-----------------------------	---------------------------------	-----------------------------	-------------------------------	---------------------------------



800	5500	NIVEE R-222 FRA 8	Use I-FAT DME when on LOC course.	SANGO I-FAT CZQ 12.6 19.4	GRIFN CZQ R-118 34.2	ELEV 336	TDZE 29R 333	TDZE 29L 331
-----	------	-------------------	-----------------------------------	---------------------------	----------------------	----------	--------------	--------------



CATEGORY	C	D	E
S-ILS 29R*	533/18	200	(200-1/2)
S-LOC 29R**	700/35	367	(400-3/4)
SIDE STEP RWY 29L	700-1 1/2 369 (400-1 1/2)	700-2	369 (400-2)
CIRCLING	920-1 1/2 584 (600-1 1/2)	920-2 584 (600-2)	1140-2 3/4 804 (900-2 3/4)



FRESNO, CALIFORNIA 36°47'N-119°43'W FRESNO YOSEMITE INTL (KFAT)

Amtd 4A 03NOV22

HI-ILS Z or LOC Z RWY 29R

SW-2, 16 APR 2026 to 14 MAY 2026

SW-2, 16 APR 2026 to 14 MAY 2026