

HI-TACAN RWY 29R

TACAN CZQ Chan 76	APCH CRS 307°	Rwy ldg 29R 9227 TDZE 29L 333 Arprt Elev 336	29L 8008 29L 331
----------------------	------------------	---	-----------------------------------

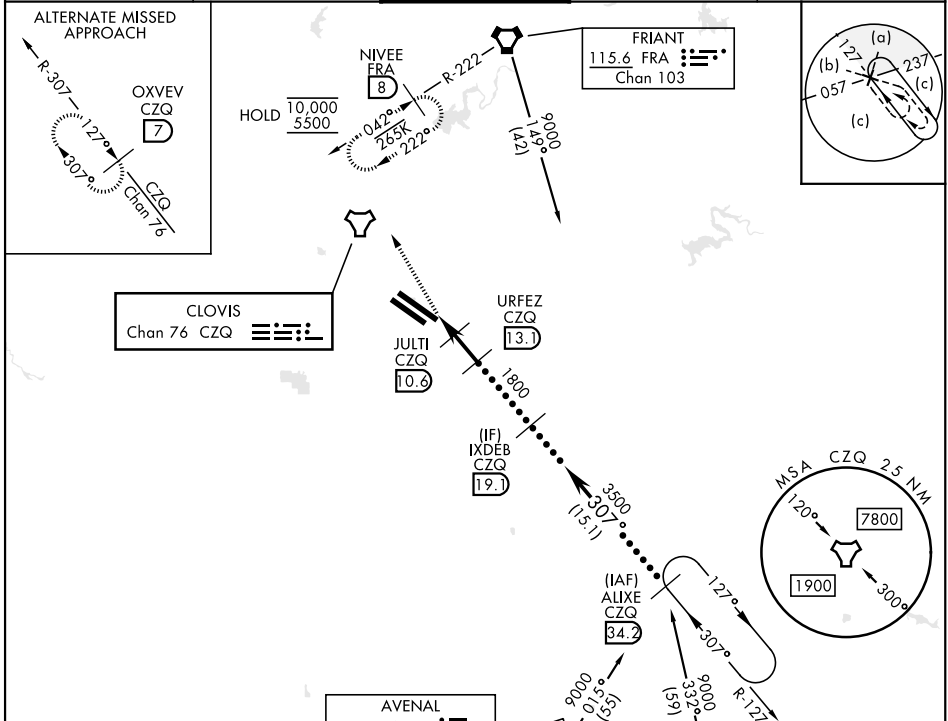
[USAF] FRESNO YOSEMITE INTL (KFAT)

DME required

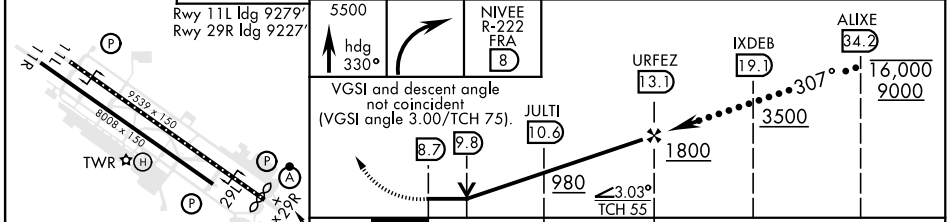
ALSIF-2

MISSED APPROACH: Climb to 5500 on heading 330° and FRA VORTAC R-222 to NIVEE/FRA 8 DME and hold, continue climb-in-hold to 5500.

ATIS 121.35 273.6	APP CON 132.35 323.25	TOWER 118.2 251.1	GND CON 121.7 348.6	CLNC DEL 124.35 348.6
-----------------------------	---------------------------------	-----------------------------	-------------------------------	---------------------------------



EMERG SAFE ALT 100 NM 16,700	ELEV 336	D TDZE 29R 333 TDZE 29L 331
------------------------------	----------	---------------------------------------



CATEGORY	C	D	E
S-29R *	760/40	427	(500-34)
SIDESTEP 29L	760-1½ 429 (500-1½)	760-2	429 (500-2)
C CIRCLING	920-1½ 584 (600-1½)	920-2 584 (600-2)	1140-2¾ 804 (900-2¾)

FRESNO, CALIFORNIA 36°47'N-119°43'W FRESNO YOSEMITE INTL (KFAT)

HI-TACAN RWY 29R



SW-2, 16 APR 2026 to 14 MAY 2026

SW-2, 16 APR 2026 to 14 MAY 2026