

# EL DORADO ONE DEPARTURE

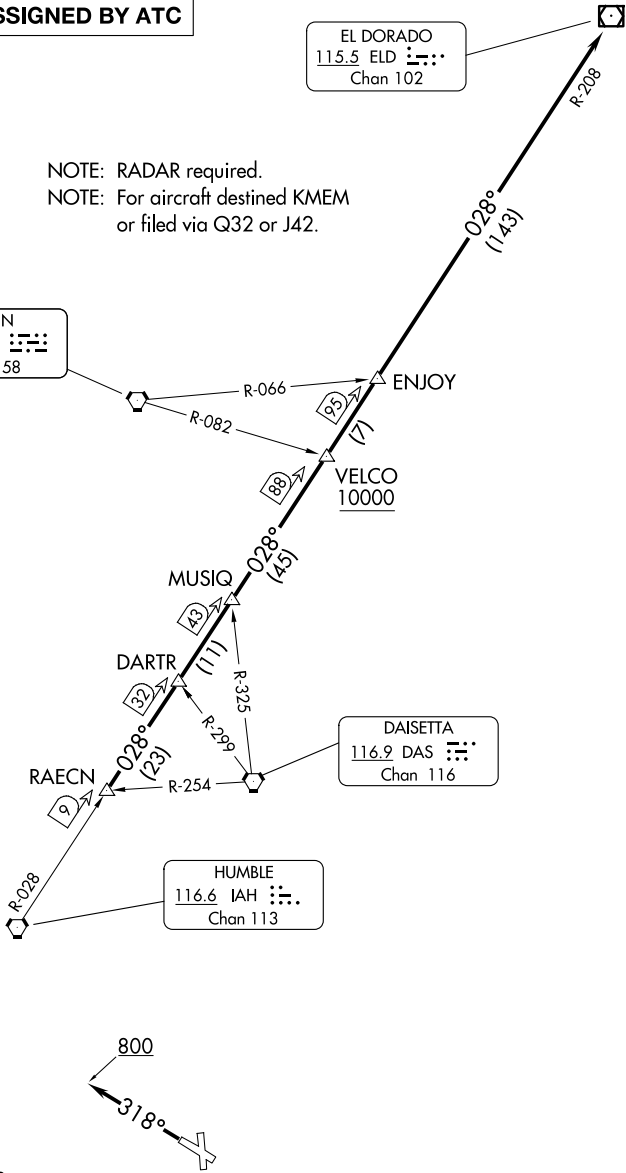
ASOS  
 123.95  
 CLNC DEL (When twr closed)  
 135.35  
 GND CON  
 118.625  
 GALVESTON TOWER ★  
 120.575 (CTAF)  
 HOUSTON DEP CON  
 134.45 284.0

**TOP ALTITUDE:  
 ASSIGNED BY ATC**

EL DORADO  
 115.5 ELD :  
 Chan 102

NOTE: RADAR required.  
 NOTE: For aircraft destined KMEM  
 or filed via Q32 or J42.

LUFKIN  
 112.1 LFK :  
 Chan 58



DAISETTA  
 116.9 DAS :  
 Chan 116

HUMBLE  
 116.6 IAH :  
 Chan 113

TAKEOFF MINIMUMS  
 Rwy's 14, 18, 32, 36: Standard.

NOTE: Chart not to scale.

(CONTINUED ON FOLLOWING PAGE)

SC-5, 16 APR 2026 to 14 MAY 2026

SC-5, 16 APR 2026 to 14 MAY 2026

# EL DORADO ONE DEPARTURE

GALVESTON, TEXAS



## DEPARTURE ROUTE DESCRIPTION

TAKEOFF RUNWAYS 14, 18, 36: When entering controlled airspace, climb on assigned heading for RADAR vectors to RAECN INT. Maintain ATC assigned altitude. Expect filed altitude 10 minutes after departure, thence. . . .

TAKEOFF RUNWAY 32: Climb on heading 318° to 800 before turning. When entering controlled airspace, climb on assigned heading for RADAR vectors to RAECN INT. Maintain ATC assigned altitude. Expect filed altitude 10 minutes after departure, thence. . . .

. . . .on IAH R-028 and the ELD R-208 to ELD VOR/DME, cross VELCO INT at or above 10000.

SC-5, 16 APR 2026 to 14 MAY 2026

SC-5, 16 APR 2026 to 14 MAY 2026