

HOODO SEVEN DEPARTURE (RNAV)

SC-5, 16 APR 2026 to 14 MAY 2026

TOP ALTITUDE: ASSIGNED BY ATC

ASOS
123.95
CLNC DEL (When twr closed)
135.35
GND CON
118.625
GALVESTON TOWER*
120.575 (CTAF)
HOUSTON DEP CON
134.45 284.0

NOTE: RNAV 1.

NOTE: RADAR required.

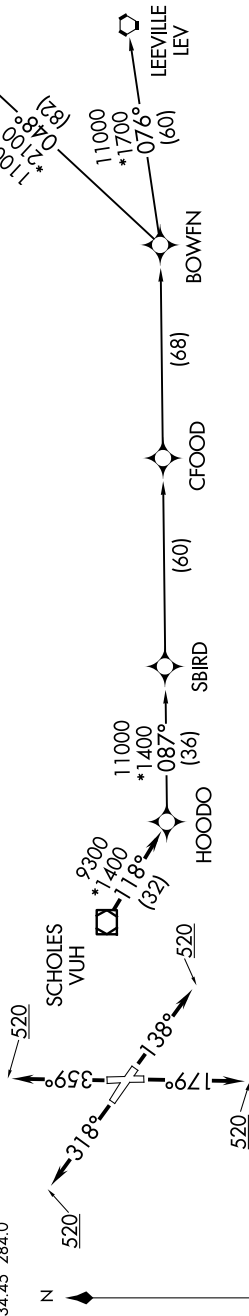
NOTE: ATC assigned only.

NOTE: DME/DME/IRU or GPS required.

NOTE: For non-GPS equipped aircraft, LCH, ILA, TBD, and LEV DME's must be operational.

TAKEOFF MINIMUMS

Rwys 14, 18, 32, 36: Standard with minimum climb of 500' per NM to 520.



NOTE: Chart not to scale.

DEPARTURE ROUTE DESCRIPTION

- TAKEOFF RUNWAY 14: Climb on heading 138° to 520, for RADAR vectors to VUH VOR/DME, thence
- TAKEOFF RUNWAY 18: Climb on heading 179° to 520, for RADAR vectors to VUH VOR/DME, thence
- TAKEOFF RUNWAY 32: Climb on heading 318° to 520, for RADAR vectors to VUH VOR/DME, thence
- TAKEOFF RUNWAY 36: Climb on heading 359° to 520, for RADAR vectors to VUH VOR/DME, thence

. . . . on track 118° to HOODO, then on (transition). Maintain ATC assigned altitude.
Expect filed altitude 10 minutes after departure.

- BOWFN TRANSITION (HOODO7.BOWFN)
- CFOOD TRANSITION (HOODO7.CFOOD)
- HARVEY TRANSITION (HOODO7.HRV)
- LEEVILLE TRANSITION (HOODO7.LEV)
- SBIRD TRANSITION (HOODO7.SBIRD)

SC-5, 16 APR 2026 to 14 MAY 2026