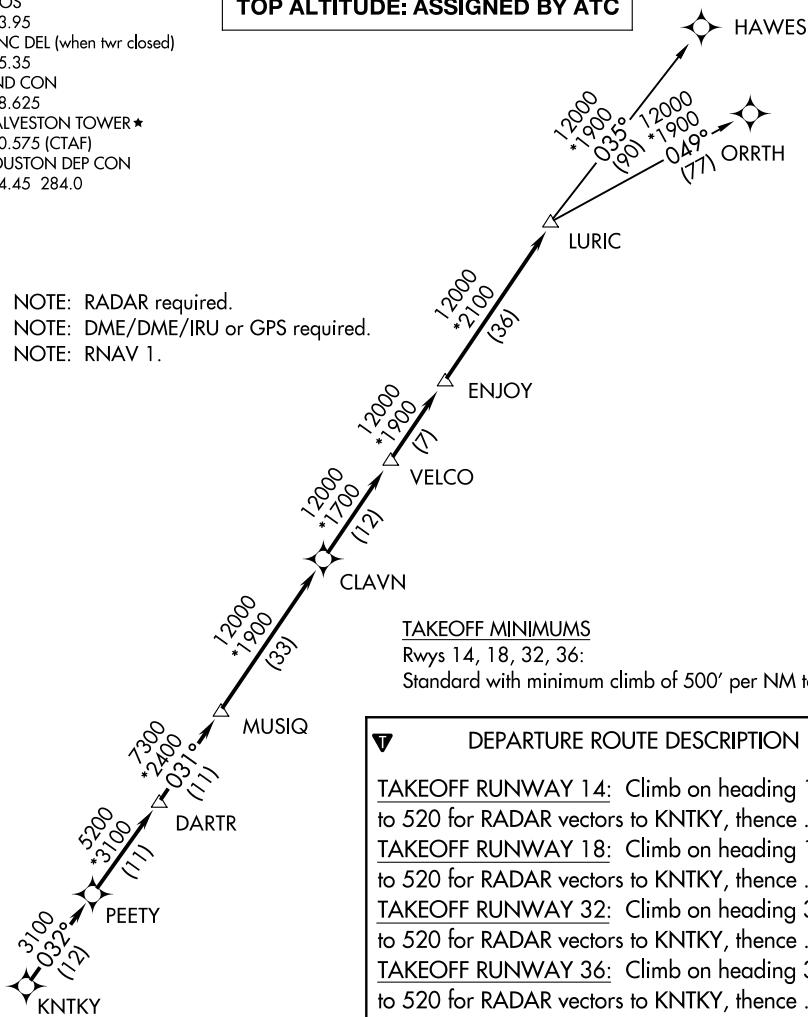


LURIC EIGHT DEPARTURE (RNAV)

ASOS
 123.95
 CLNC DEL (when twr closed)
 135.35
 GND CON
 118.625
 GALVESTON TOWER ★
 120.575 (CTAF)
 HOUSTON DEP CON
 134.45 284.0

TOP ALTITUDE: ASSIGNED BY ATC

NOTE: RADAR required.
 NOTE: DME/DME/IRU or GPS required.
 NOTE: RNAV 1.



TAKEOFF MINIMUMS

Rwys 14, 18, 32, 36:

Standard with minimum climb of 500' per NM to 520.

DEPARTURE ROUTE DESCRIPTION

TAKEOFF RUNWAY 14: Climb on heading 138° to 520 for RADAR vectors to KNTKY, thence . . .

TAKEOFF RUNWAY 18: Climb on heading 179° to 520 for RADAR vectors to KNTKY, thence . . .

TAKEOFF RUNWAY 32: Climb on heading 318° to 520 for RADAR vectors to KNTKY, thence . . .

TAKEOFF RUNWAY 36: Climb on heading 359° to 520 for RADAR vectors to KNTKY, thence . . .

. . . on track 032° to PEETY, then on track 032° to DARTR, then on track 031° to MUSIQ, then on track 031° to CLAVN, then on track 031° to VELCO, then on track 031° to ENJOY, then on track 031° to LURIC, then on (transition). Maintain ATC assigned altitude. Expect filed altitude 10 minutes after departure.

HAWES TRANSITION (LURIC8.HAWES)

ORRTH TRANSITION (LURIC8.ORRTH)

NOTE: Chart not to scale.

LURIC EIGHT DEPARTURE (RNAV)

(LURIC8.LURIC) 07OCT21