

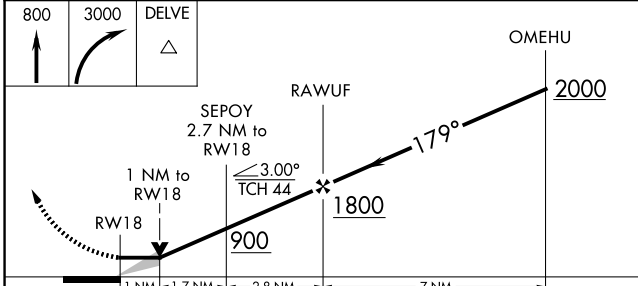
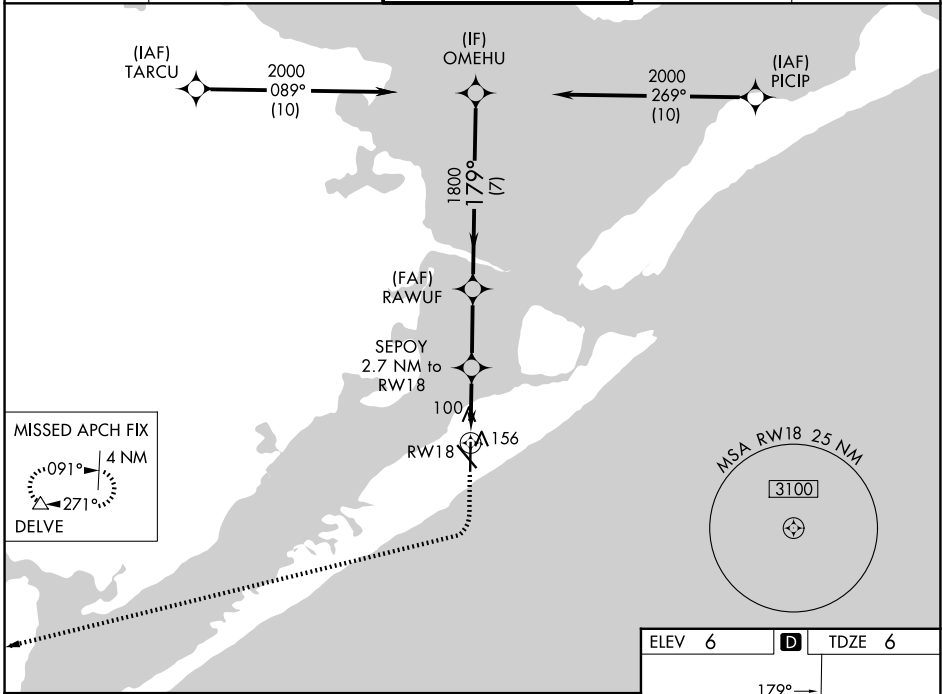
WAAS CH 82301 W18A	APP CRS 179°	Rwy Ldg TDZE Apt Elev	6001 6 6
--	------------------------	-----------------------------	-------------------------------------

RNAV (GPS) RWY 18

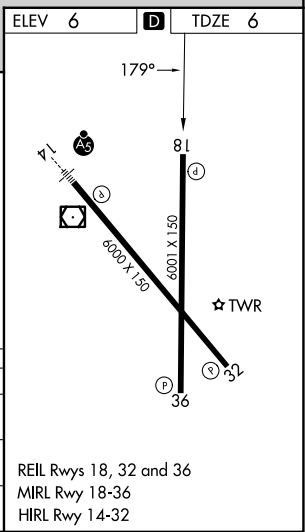
SCHOLES INTL AT GALVESTON (GLS)

RNP APCH.		MISSED APPROACH: Climb to 800 then climbing right turn to 3000 direct DELVE and hold.		
<p>Circling NA east of Rwy 18 and northeast of Rwy 32.</p>				

ASOS 123.95	HOUSTON APP CON 134.45 284.0	GALVESTON TOWER ★ 120.575 (CTAF) 0	GND CON 118.625	UNICOM 123.05
-----------------------	--	--	---------------------------	-------------------------



	1 NM	1.7 NM	2.8 NM	7 NM	
CATEGORY	A	B	C	D	E
LP MDA	360-1		354 (400-1)		
LNVA MDA	420-1	414 (500-1)	420-1 1/8	414 (500-1 1/8)	
CIRCLING	500-1 494 (500-1)	520-1 514 (600-1)	620-1 3/4 614 (700-1 3/4)	620-2 614 (700-2)	620-2 1/4 614 (700-2 1/4)



REIL Rwy 18, 32 and 36
MIRL Rwy 18-36
HIRL Rwy 14-32

SC-5, 16 APR 2026 to 14 MAY 2026

SC-5, 16 APR 2026 to 14 MAY 2026