

WAAS CH 40101 W32A	APP CRS 318°	Rwy Ldg TDZE Apt Elev	5819 5 6
--	------------------------	-----------------------------	-------------------------------------

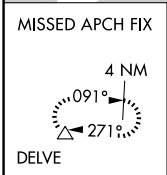
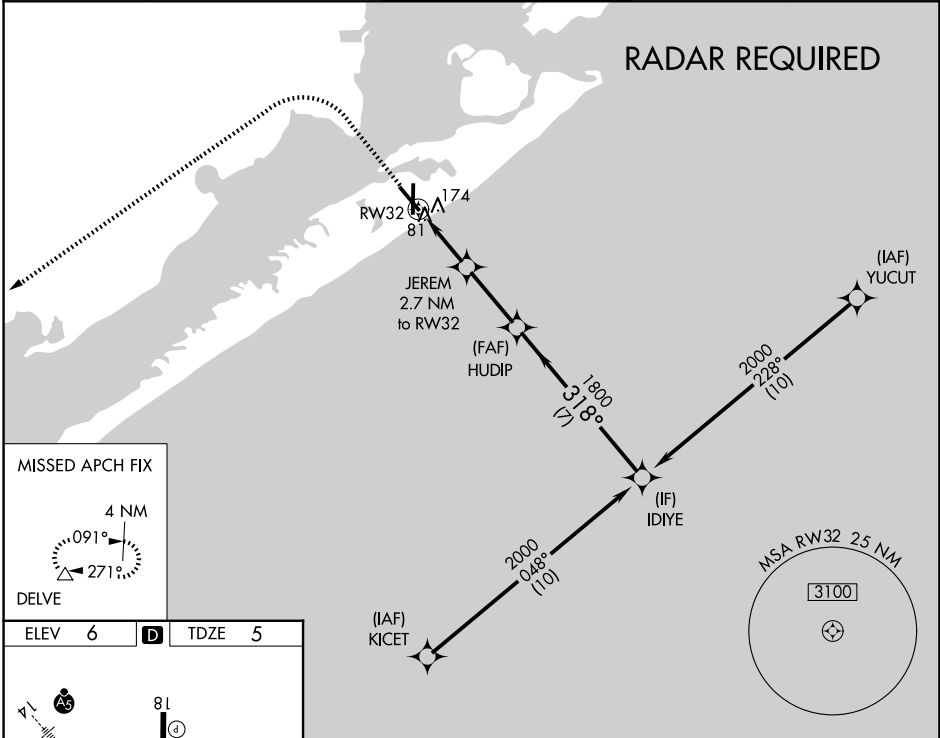
RNAV (GPS) RWY 32

SCHOLES INTL AT GALVESTON (GLS)

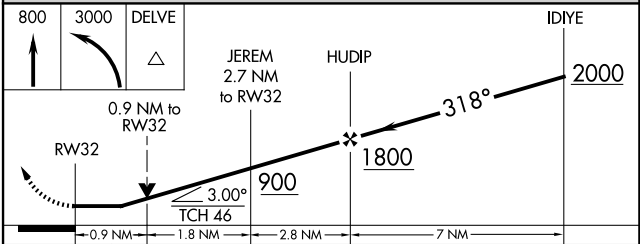
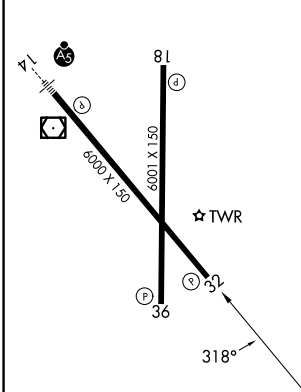
⚠ Circling NA east of Rwy 18 and northeast of Rwy 32. DME/DME RNP-0.3 NA. Helicopter visibility reduction below 3/4 SM NA. VDP NA with William P Hobby altimeter setting. When local altimeter setting not received, use William P Hobby altimeter setting; increase all MDA 80 feet. Increase LP Cat C/D/E visibility 1/8 SM, increase LNAV Cat C/D/E visibility 1/8 SM and increase Circling Cat C/D/E visibility 1/4 SM.

MISSED APPROACH:
Climb to 800 then climbing left turn to 3000 direct DELVE and hold.

ASOS 123.95	HOUSTON APP CON 134.45 284.0	GALVESTON TOWER ★ 120.575 (CTAF) 0	GND CON 118.625	UNICOM 123.05
-----------------------	--	--	---------------------------	-------------------------



ELEV 6	D	TDZE 5
--------	----------	--------



CATEGORY	A	B	C	D	E
LP MDA	340-1		335 (400-1)		
LNAV MDA	440-1 435 (500-1)		440-1 1/4 435 (500-1 1/4)		
CIRCLING	500-1 494 (500-1)	520-1 514 (600-1)	620-1 3/4 614 (700-1 3/4)	620-2 614 (700-2)	620-2 1/4 614 (700-2 1/4)

REIL Rwy 18, 32 and 36
MIRL Rwy 18-36
HIRL Rwy 14-32

SC-5, 16 APR 2026 to 14 MAY 2026

SC-5, 16 APR 2026 to 14 MAY 2026