

STRYA EIGHT DEPARTURE (RNAV)

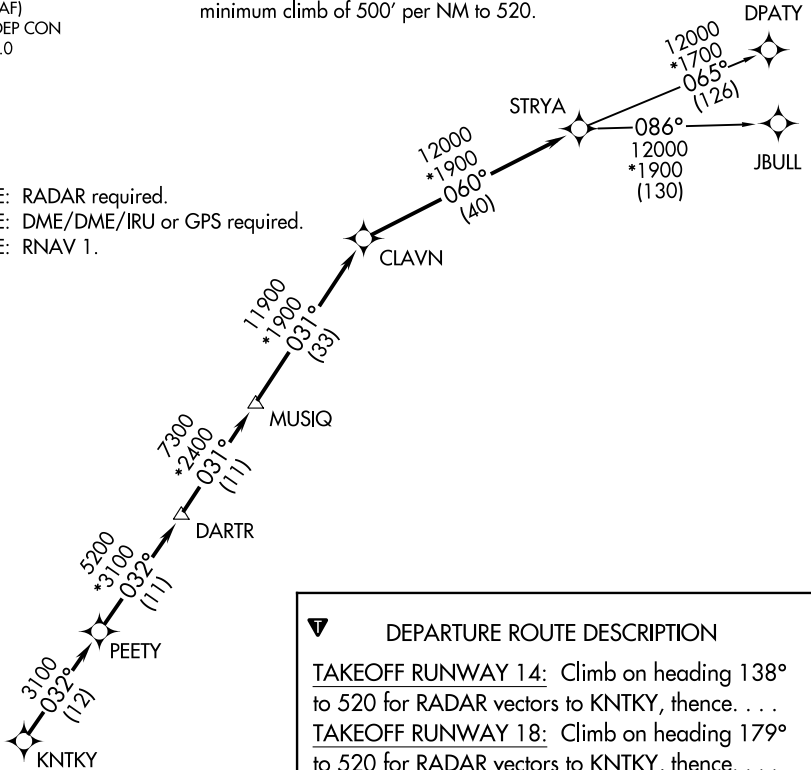
TOP ALTITUDE: ASSIGNED BY ATC

ASOS
123.95
CLNC DEL (when twr closed)
135.35
GND CON
118.625
GALVESTON TOWER ★
120.575 (CTAF)
HOUSTON DEP CON
134.45 284.0

TAKEOFF MINIMUMS

Rwys 14, 18, 32, 36: Standard with
minimum climb of 500' per NM to 520.

NOTE: RADAR required.
NOTE: DME/DME/IRU or GPS required.
NOTE: RNAV 1.



DEPARTURE ROUTE DESCRIPTION

TAKEOFF RUNWAY 14: Climb on heading 138° to 520 for RADAR vectors to KNTKY, thence. . . .

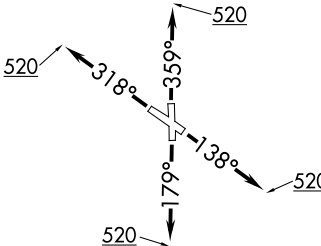
TAKEOFF RUNWAY 18: Climb on heading 179° to 520 for RADAR vectors to KNTKY, thence. . . .

TAKEOFF RUNWAY 32: Climb on heading 318° to 520 for RADAR vectors to KNTKY, thence. . . .

TAKEOFF RUNWAY 36: Climb on heading 359° to 520 for RADAR vectors to KNTKY, thence. . . .

. . . .on track 032° to PEETY, then on track 032° to DARTR, then on track 031° to MUSIQ, then on track 031° to CLAVN, then on track 060° to STRYA, then on (transition). Maintain ATC assigned altitude. Expect filed altitude 10 minutes after departure.

DPATY TRANSITION (STRYA8.DPATY)
JBULL TRANSITION (STRYA8.JBULL)



NOTE: Chart not to scale.

SC-5, 16 APR 2026 to 14 MAY 2026

SC-5, 16 APR 2026 to 14 MAY 2026

STRYA EIGHT DEPARTURE (RNAV)

(STRYA8.STRYA) 07OCT21