

# AIRPORT DIAGRAM

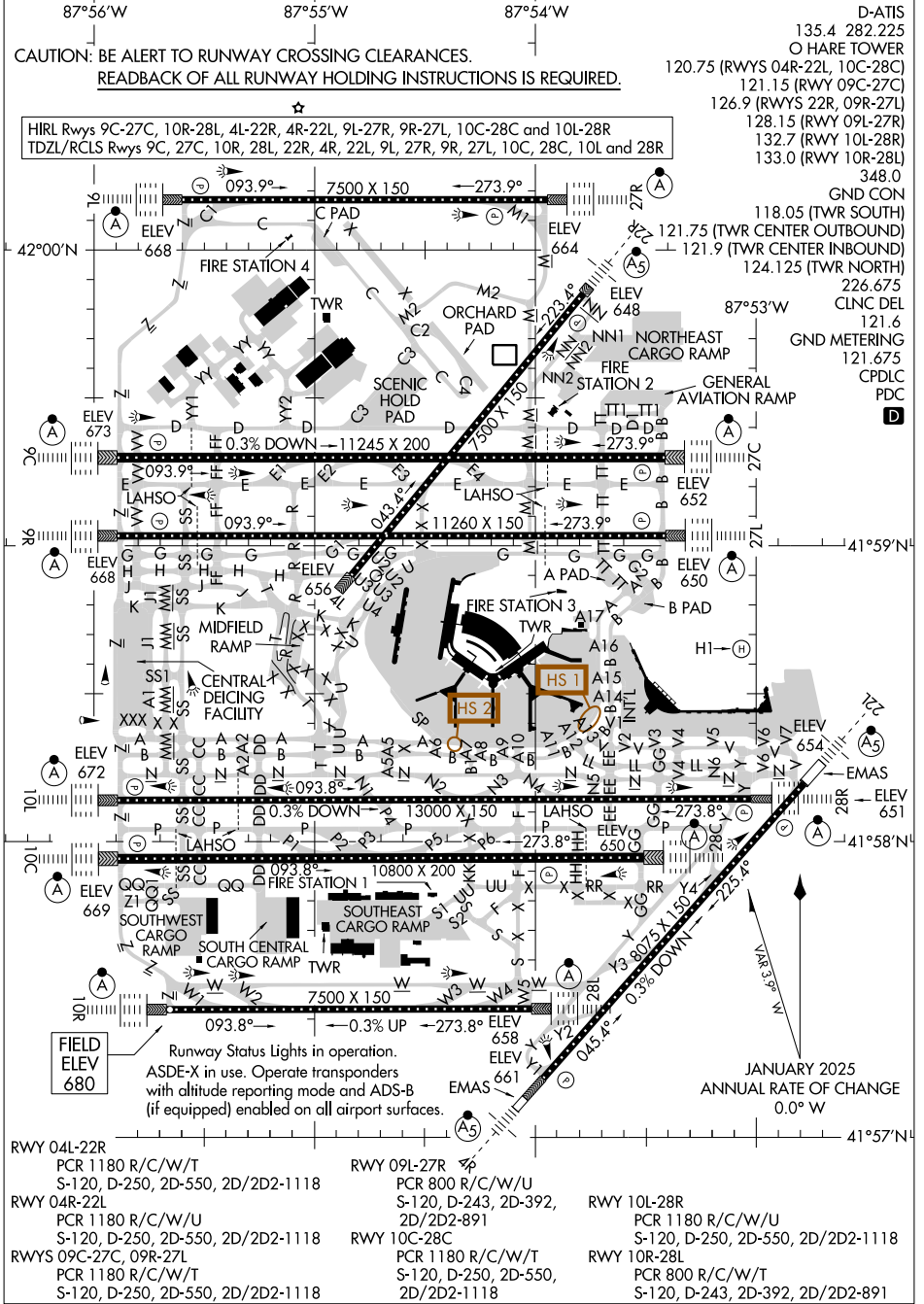
AL-166 (FAA)

CHICAGO O'HARE INTL (O.R.D)  
CHICAGO, ILLINOIS

CAUTION: BE ALERT TO RUNWAY CROSSING CLEARANCES.  
READBACK OF ALL RUNWAY HOLDING INSTRUCTIONS IS REQUIRED.

HIRL Rwwys 9C-27C, 10R-28L, 4L-22R, 4R-22L, 9L-27R, 9R-27L, 10C-28C and 10L-28R  
TDZL/RCLS Rwwys 9C, 27C, 10R, 28L, 22R, 4R, 22L, 9L, 27R, 9R, 27L, 10C, 28C, 10L and 28R

- D-ATIS 135.4 282.225
- O HARE TOWER 120.75 (RWYS 04R-22L, 10C-28C)
- 121.15 (RWY 09C-27C)
- 126.9 (RWYS 22R, 09R-27L)
- 128.15 (RWY 09L-27R)
- 132.7 (RWY 10L-28R)
- 133.0 (RWY 10R-28L)
- 348.0 GND CON
- 118.05 (TWR SOUTH)
- 121.75 (TWR CENTER OUTBOUND)
- 121.9 (TWR CENTER INBOUND)
- 124.125 (TWR NORTH)
- 226.675 CLNC DEL
- 121.6 GND METERING
- 121.675 CPDLC
- PDC



EC-3, 16 APR 2026 to 14 MAY 2026

EC-3, 16 APR 2026 to 14 MAY 2026

FIELD ELEV 680

Runway Status Lights in operation.  
ASDE-X in use. Operate transponders with altitude reporting mode and ADS-B (if equipped) enabled on all airport surfaces.

JANUARY 2025  
ANNUAL RATE OF CHANGE 0.0° W

RWY 04L-22R PCR 1180 R/C/W/T S-120, D-250, 2D-550, 2D/2D2-1118	RWY 09L-27R PCR 800 R/C/W/U S-120, D-243, 2D-392, 2D/2D2-891	RWY 10L-28R PCR 1180 R/C/W/U S-120, D-250, 2D-550, 2D/2D2-1118
RWY 04R-22L PCR 1180 R/C/W/U S-120, D-250, 2D-550, 2D/2D2-1118	RWY 10C-28C PCR 1180 R/C/W/T S-120, D-250, 2D-550, 2D/2D2-1118	RWY 10R-28L PCR 800 R/C/W/T S-120, D-243, 2D-392, 2D/2D2-891
RWYS 09C-27C, 09R-27L PCR 1180 R/C/W/T S-120, D-250, 2D-550, 2D/2D2-1118		