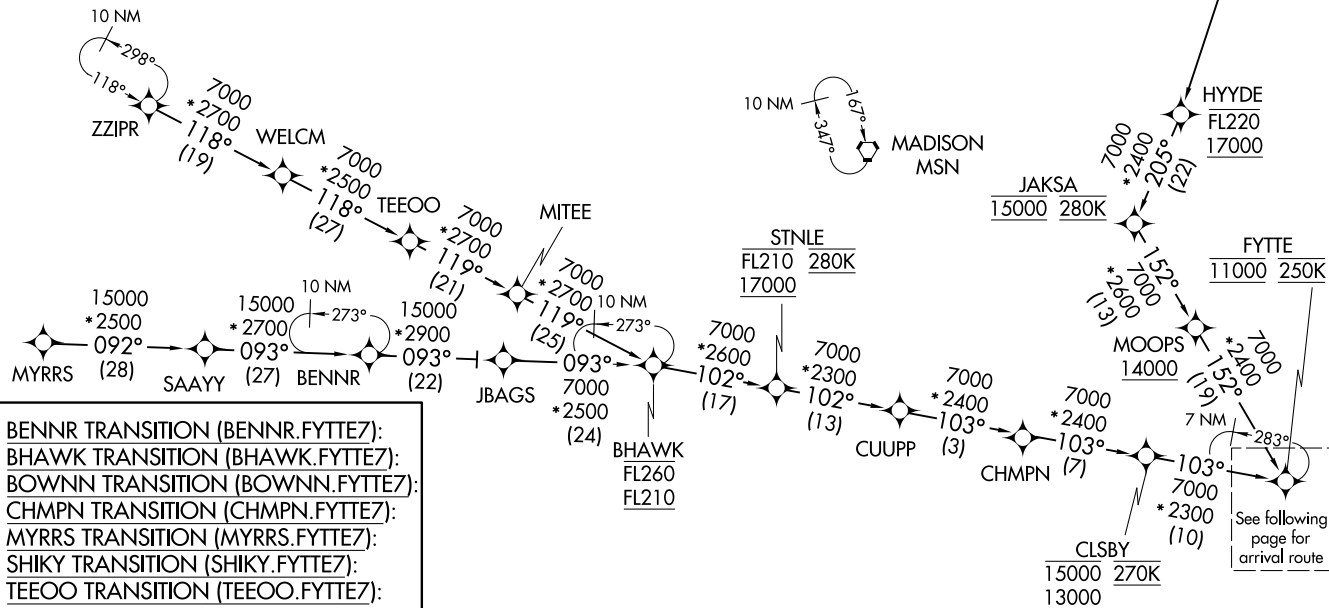


FYTE SEVEN ARRIVAL (RNAV) Transition Routes
(FYTE.FYTEZ) 17JUN21

CHICAGO APP CON
119.0 292.125
D-ATIS
135.4 282.225

N

NOTE: RADAR required.
NOTE: RNAV 1.
NOTE: DME/DME/IRU or GPS required.



- BENNR TRANSITION (BENNR.FYTEZ):
- BHAWK TRANSITION (BHAWK.FYTEZ):
- BOWNN TRANSITION (BOWNN.FYTEZ):
- CHMPN TRANSITION (CHMPN.FYTEZ):
- MYRRS TRANSITION (MYRRS.FYTEZ):
- SHIKY TRANSITION (SHIKY.FYTEZ):
- TEEEO TRANSITION (TEEEO.FYTEZ):
- ZZIPR TRANSITION (ZZIPR.FYTEZ):

(CONTINUED ON FOLLOWING PAGE)

NOTE: Chart not to scale.

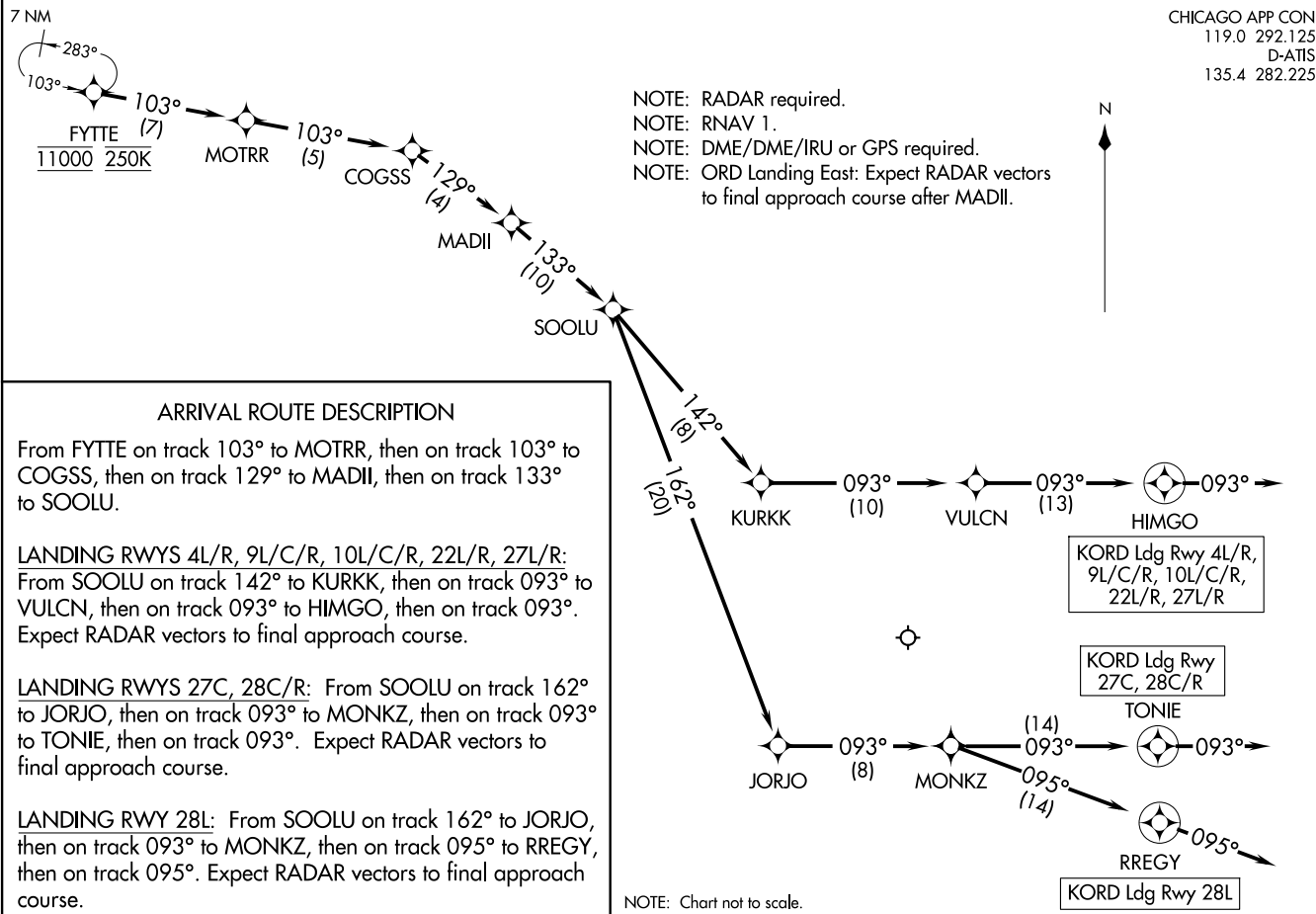
(FYTE.FYTEZ) 21188
FYTE SEVEN ARRIVAL (RNAV) Transition Routes

AL-166

CHICAGO O'HARE INTL (ORD)
CHICAGO, ILLINOIS

FYTE SEVEN ARRIVAL (RNAV) Arrival Routes
(FYTE: FYTE7) 17JUN21

CHICAGO, ILLINOIS
CHICAGO O'HARE INTL (ORD)



CHICAGO APP CON
119.0 292.125
D-ATIS
135.4 282.225

NOTE: RADAR required.
NOTE: RNAV 1.
NOTE: DME/DME/IRU or GPS required.
NOTE: ORD Landing East: Expect RADAR vectors to final approach course after MADII.

ARRIVAL ROUTE DESCRIPTION

From FYTE on track 103° to MOTRR, then on track 103° to COGSS, then on track 129° to MADII, then on track 133° to SOOLU.

LANDING RWYS 4L/R, 9L/C/R, 10L/C/R, 22L/R, 27L/R:
From SOOLU on track 142° to KURKK, then on track 093° to VULCN, then on track 093° to HIMGO, then on track 093°.
Expect RADAR vectors to final approach course.

LANDING RWYS 27C, 28C/R: From SOOLU on track 162° to JORJO, then on track 093° to MONKZ, then on track 093° to TONIE, then on track 093°.
Expect RADAR vectors to final approach course.

LANDING RWY 28L: From SOOLU on track 162° to JORJO, then on track 093° to MONKZ, then on track 095° to RREGY, then on track 095°.
Expect RADAR vectors to final approach course.

NOTE: Chart not to scale.

(FYTE: FYTE7) 21168
FYTE SEVEN ARRIVAL (RNAV) Arrival Routes

CHICAGO O'HARE INTL (ORD)
CHICAGO, ILLINOIS

A1-166