

LOC/DME I-SXH 108.95 Chan 26(Y)	APP CRS 093°	Rwy Ldg TDZE 669 Apt Elev 680
--	------------------------	---

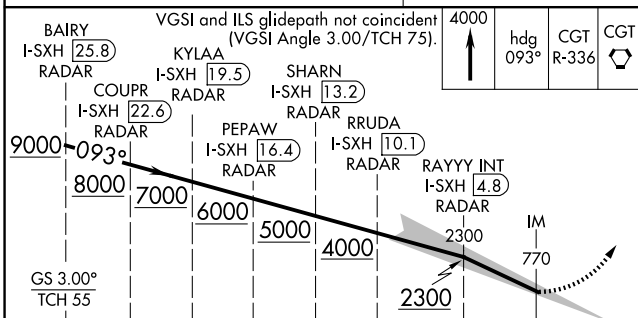
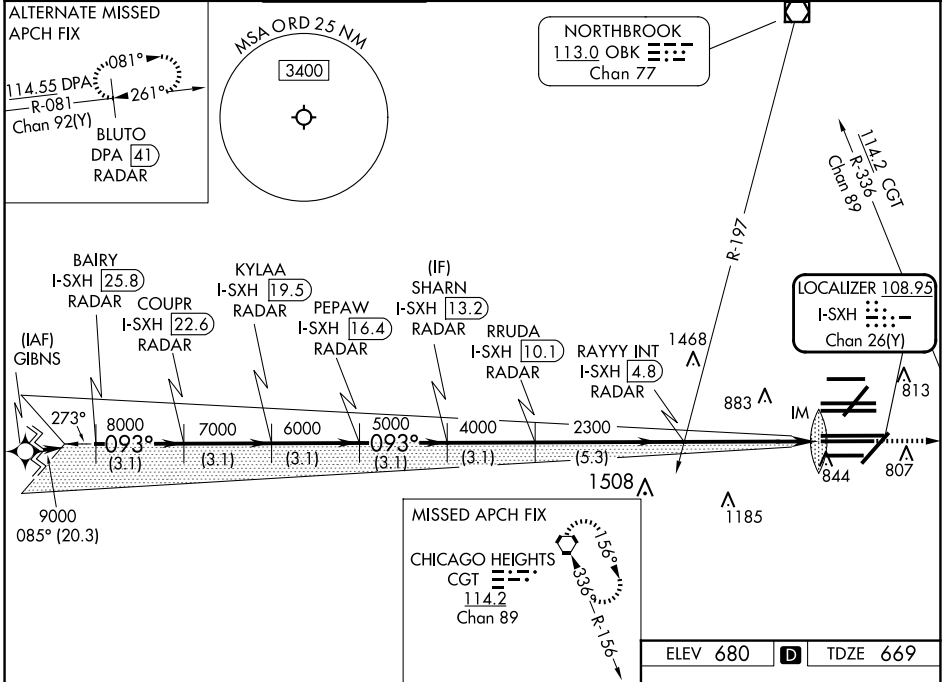
ILS RWY 10C (CAT II & III)

CHICAGO O'HARE INTL (ORD)

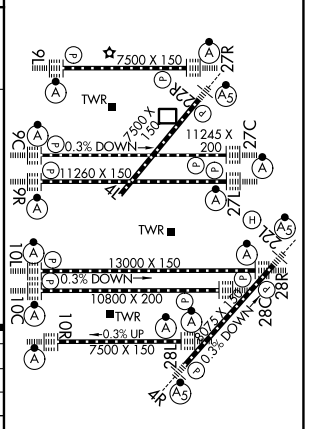
From GIBNS: RNAV-1 GPS required.
 RNAV 1-GPS or RADAR required for procedure entry. DME or RADAR required.
 Simultaneous approach authorized. CAT II: RVR 1000 authorized with specific OPSPEC, MSPEC, or LOA approval and use of autoland or HUD to touchdown.

ALSF-2
 MISSED APPROACH: Climb to 4000 on heading 093° and CGT VORTAC R-336 to CGT VORTAC and hold.

D-ATIS 135.4 282.225	CHICAGO APP CON 119.0 292.125	O'HARE TOWER 120.75 348.0	GND CON (TWR NORTH) 124.125 (TWR SOUTH) 118.05 226.675 (ALL TWRs)	(TWR CENTER) 121.75 (OBND) 121.9 (IBND)	CLNC DEL 121.6	CPDLC
--	---	-------------------------------------	--	---	--------------------------	-------



ELEV 680	TDZE 669
----------	----------



CATEGORY	A	B	C	D
S-ILS 10C	CAT II RA 102/12 100 DA 769			
S-ILS 10C	CAT III RVR 06			

CATEGORY II and III ILS - SPECIAL AIRCREW & AIRCRAFT CERTIFICATION REQUIRED

HIRL all Rwys
 TDZ/CL all Rwys except 4L

EC-3, 16 APR 2026 to 14 MAY 2026

EC-3, 16 APR 2026 to 14 MAY 2026